

TESAB

Crusher Product Range



www.tesab.com

Engineered for Power, Built to Last



"With over 20 years experience providing solutions to thousands of customers, Tesab is renowned worldwide for offering flexible, high performance products that are built to last"

Offering three different range of products including Crushers, Screeners and Bulk Handling Systems, Tesab are well placed to meet the needs of customers in the mining, quarrying and recycling sectors. All the products manufactured by Tesab are designed to give their customers the individual performance and results that each of them require.

"We know better than anyone what it takes for our customers to succeed in one of the toughest industries in the world and we know that the best solutions do not always come from mass produced products. You need your machines to perform for you today and you need them to give you results for many years to come - that's what we provide"

By operating a worldwide distributor network, Tesab has the local service and back-up that every customer needs and they make building relationships with their customers a priority.

"We pride ourselves on our flexibility and we respond accordingly to the needs and demands of our customers."

Through expanding resources and expertise Tesab's product range is always growing and improving. By incorporating advancements in technology into its products Tesab are continually improving the performance of their machines and providing even greater results for their customers.



Mobile Cone Crushers

Tesab Crushing Range



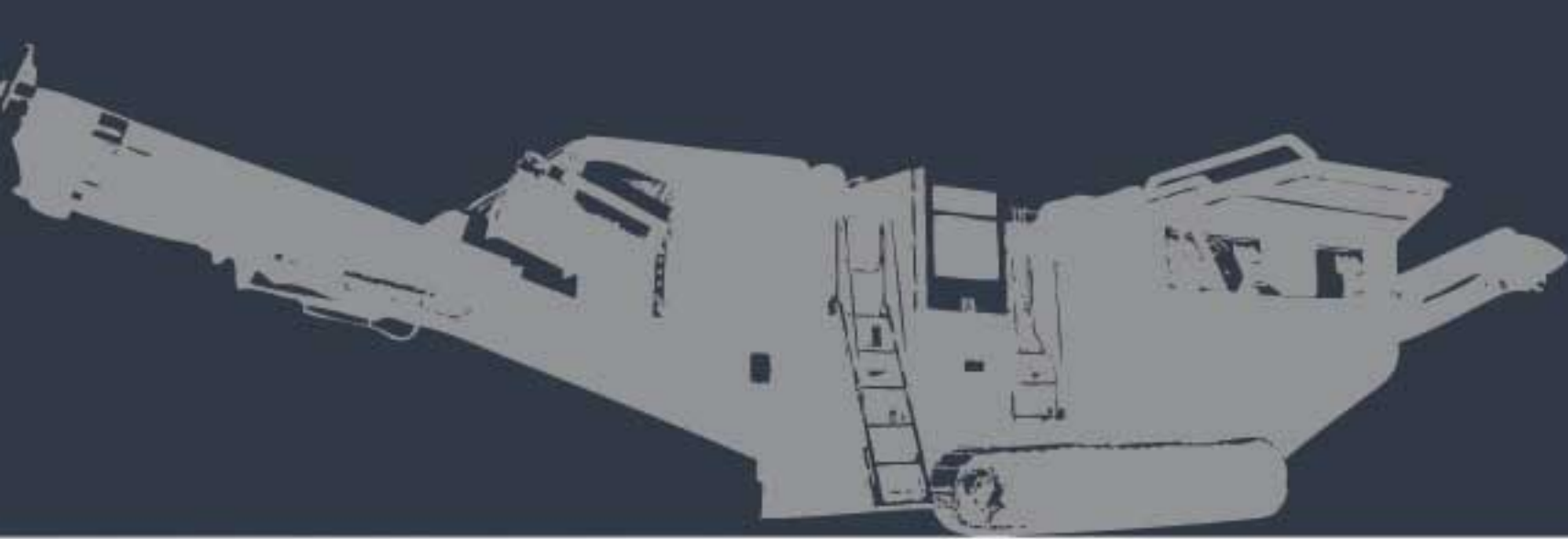
Mobile Jaw Crushers



Mobile Impact Crushers



Static Crushers



Mobile Cone Crushers

1200TC Tracked Cone Crusher



1200TC

The Tesab 1200TC Tracked cone crusher is a heavy duty mobile unit designed to produce high quality secondary aggregates. The superior design of the crusher unit incorporates a top support spider bearing in addition to the bottom eccentric bearing. This allows crushing to take place higher up in the chamber which results in consistent shape, increased reduction ratio, higher throughput and a reduced wear factor.

The 1200TC features a 440Hp (328Kw) Caterpillar 6 cylinder engine, a 1200mm wide cone crusher unit with hydraulic closed side setting 'on the fly' and metal detection system on feed belt to protect from uncrushables.

The 1200TC can be fed by Wheeled Loader, Excavator or Screening Plant. This machine also integrates easily the Tesab range of crushers and screeners.



Performance Specification

Production Rate	Max Feed Size	Reduction Ratio	Engine Size	Feeder Belt
300+ TPH*	250mm (10")*	Up to 6:1	CAT 440Hp (328Kw)	Yes

* Depending on material density and set-up

Dimension Specification

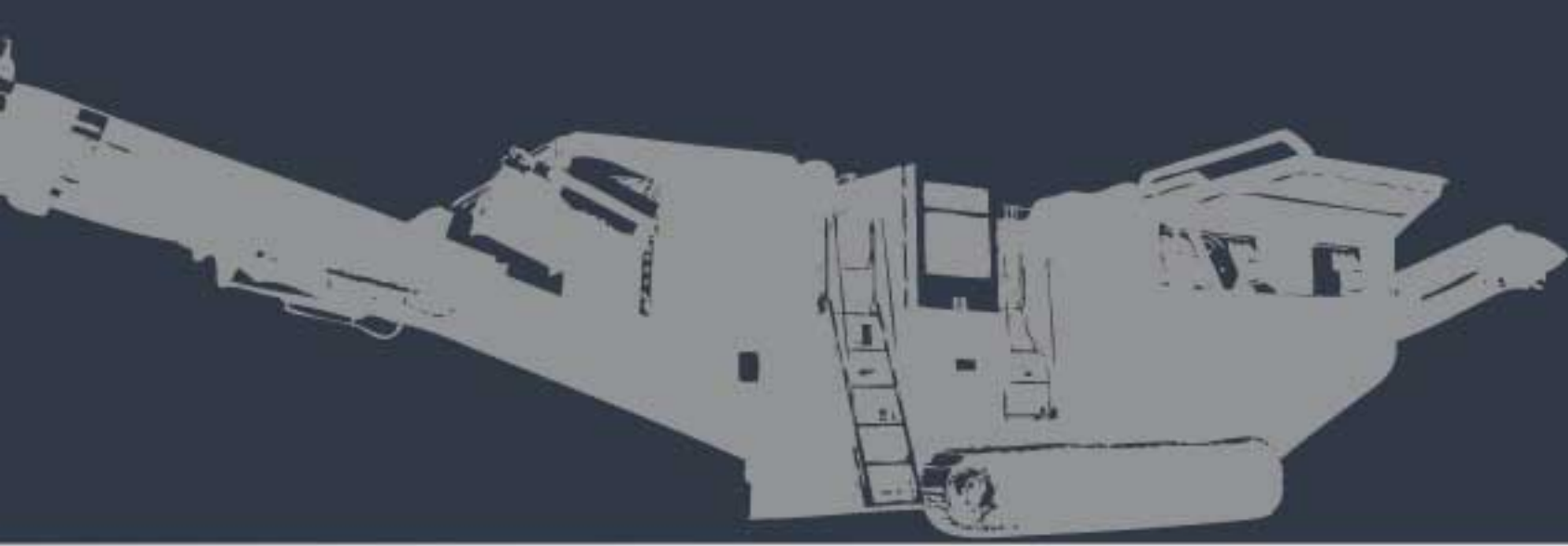
Transport Dimensions			Working Dimensions		
Height	Width	Length	Width	Length	Weight (Est.)
3800mm (12'5")	3000mm (9'10")	17,400mm (57'2")	3000mm (9'10")	18,300mm (59'10")	42,000 Kgs (92,594 lbs)

Features & Benefits

- Large reduction ratio and high quality cubical shaped product
- Mantle and Concave Fully Machined Fit - no backing compound required
- Fuel efficient Caterpillar engine
- Innovative design for fast setup and easy transportation



Engineered for Power, Built to Last



Mobile Jaw Crushers

10570 Tracked Jaw Crusher



10570

The Tesab 10570 Tracked jaw crusher is a heavy duty mobile crushing unit designed to crush primary rock at the quarry face.

Due to the 2 deck independent pre-screen being fitted as standard, production costs are reduced as a sized product can be produced on the side belt. Also, as the crusher is driven directly the machine is incredibly fuel efficient.

The 10570 features a 300Hp (224Kw) Caterpillar C9, 6 cylinder engine, a 19 Ton, 1100x700mm wide jaw crusher unit with hydraulic adjustment and a 1200mm wide discharge belt.

The 10570 can be fed by Excavator as a standalone unit and also integrates easily into the Tesab range of secondary crushers and screeners.



Features & Benefits

- Up to 300+ tonnes per hour production rate
- 2 deck independent pre-screen as standard
- Fuel efficient Caterpillar engine
- Innovative design for fast setup and easy transportation

Performance Specification

Production Rate	Max Feed Size	Reduction Ratio	Engine Size	Pre Screen
300+ TPH*	700mm (28')	Up to 4:1	CAT 300Hp (224Kw)	Yes

* Depending on material density and set-up

Dimension Specification

Transport Dimensions			Working Dimensions		
Height	Width	Length	Width	Length	Weight (Est.)
3650mm (12')	3100mm (10'2")	14,650mm (48')	3310mm (10'10")	16,220mm (53'3")	54,000 Kgs (119,049 lbs)





Mobile Jaw Crushers

10580 Tracked Jaw Crusher



10580

The Tesab 10580 Tracked jaw crusher is a heavy duty mobile crushing unit designed to crush primary rock at the quarry face.

Due to the unique design of the 'nip-angle' and extra long jaws, the 10580 is ideally suited to hard rock applications. With a direct drive design and large flywheel providing lots of inertia, this is an exceptionally efficient rock crushing machine.

The 10580 features a 440Hp (328Kw) Caterpillar 6 cylinder engine with a 24 Ton, 1100x800mm wide jaw crusher unit with crusher overfill protection.

The 10580 can be fed by Excavator as a standalone unit and also integrates easily into the Tesab range of secondary crushers and screeners.



Performance Specification

Production Rate	Max Feed Size	Reduction Ratio	Engine Size	Pre Screen
350+ TPH*	800mm (32")*	Up to 4:1	CAT 440Hp (328Kw)	Optional

* Depending on material density and set-up

Dimension Specification

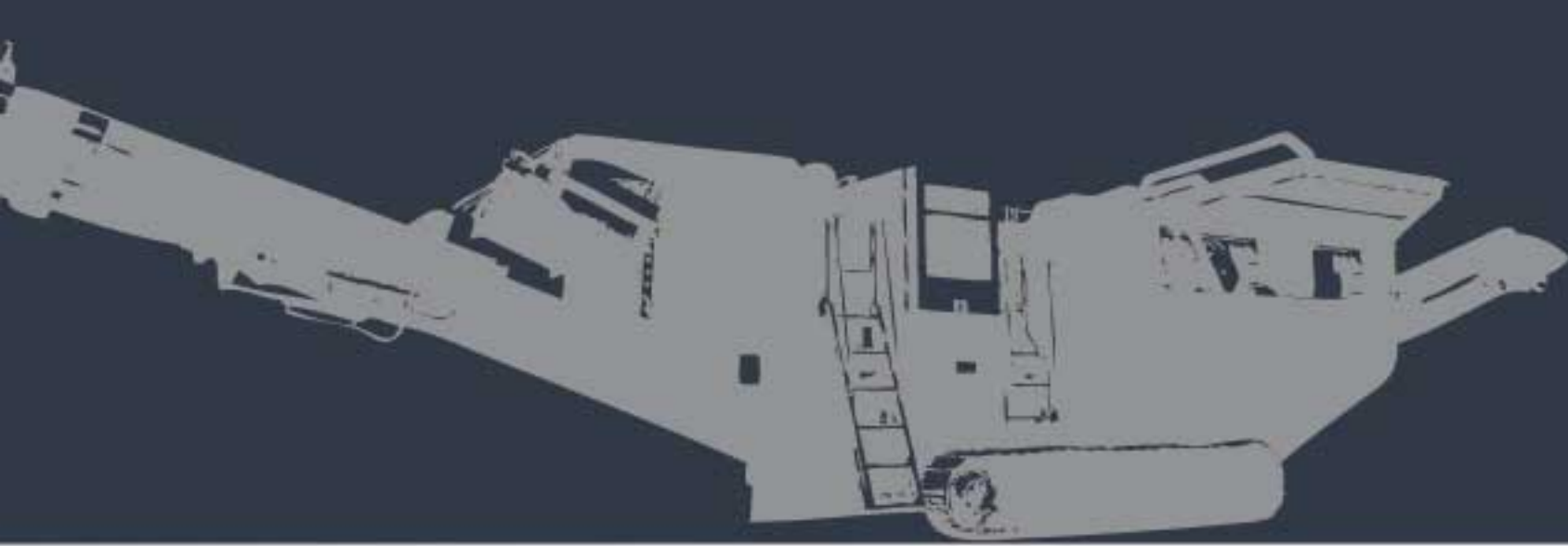
Transport Dimensions			Working Dimensions		
Height	Width	Length	Width	Length	Weight (Est.)
3800mm (12'6")	3000mm (9'10")	17,210mm (56'6")	2950mm (9'8")	16,610mm (54'6")	60,000 Kgs (132,277 lbs)

Features & Benefits

- Up to 350+ tonnes per hour production rate
- 2 deck independent pre-screen option
- Fuel efficient Caterpillar engine
- Innovative design for fast setup and easy transportation



Engineered for Power, Built to Last



Mobile Impact Crushers

623CT Tracked Impact Crusher



Features & Benefits

- Up to 150+ tonnes per hour production rate
- Superior Cubical Shaped Product
- Fuel efficient Caterpillar engine
- Innovative design for fast setup and easy transportation



Engineered for Power, Built to Last

623CT

The Tesab 623CT is a compact, mobile, secondary crusher with the well proven 623 impact crushing unit at the heart of the machine.

Due to the unique design of the crusher unit, an exceptionally good cubical shape and high reduction rate can be easily achieved. The reliability and consistency of this machine has been proven over many years and it is unrivalled at providing a high quality end product at low tonnage costs.

The 623CT features a 275Hp (205Kw) Caterpillar C9, 6 cylinder engine with a heavy duty impact crusher unit with 1100mm (42") diameter rotor and extra crushing and shaping path.

Suited for both secondary and tertiary applications the 623CT can work standalone or integrate easily into existing crushing and screening operations.



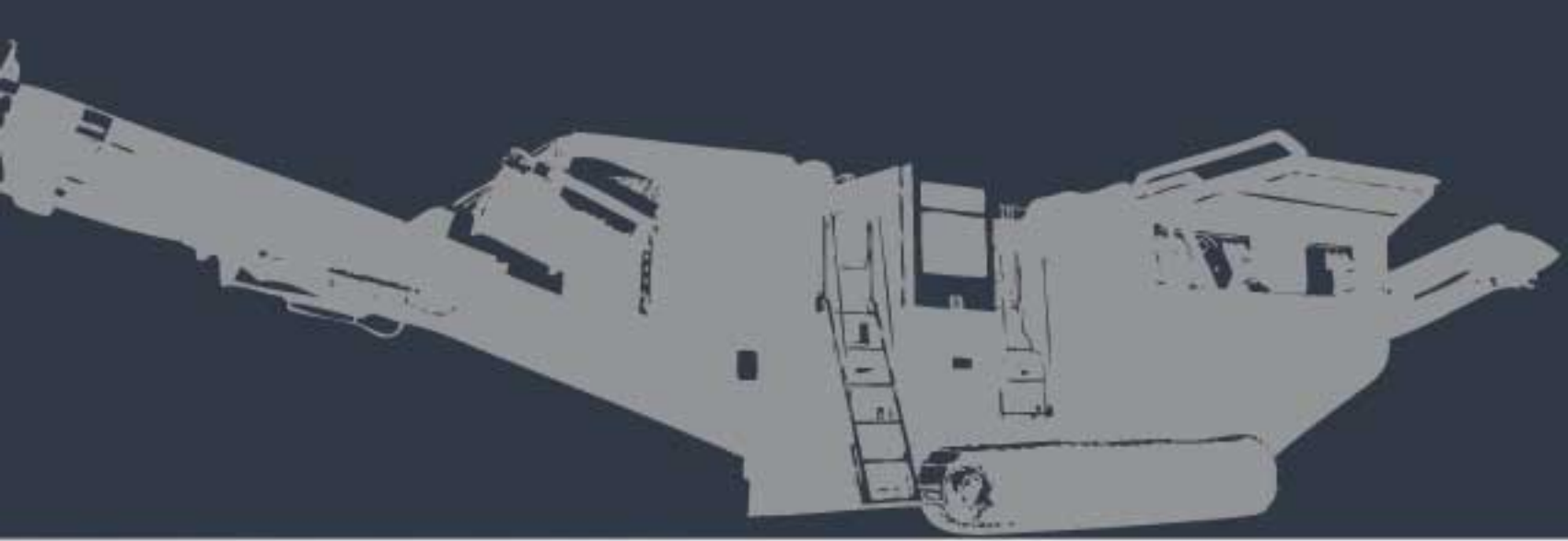
Performance Specification

Production Rate	Max Feed Size	Reduction Ratio	Engine Size	Feeder Belt
150+ TPH*	200mm (8')	Up to 20:1	CAT 275Hp (205Kw)	Yes

* Depending on material density and set-up

Dimension Specification

Transport Dimensions			Working Dimensions		
Height	Width	Length	Width	Length	Weight (Est.)
3400mm (11'1")	2900mm (9'6")	15,000mm (49'2")	2900mm (9'6")	16,130mm (52'11")	27,000kgs (59,525 lbs)



Mobile Impact Crushers

623S Wheeled Impact Crusher



Performance Specification

Production Rate	Max Feed Size	Reduction Ratio	Engine Size	Feeder Belt
150+ TPH*	200mm (8")*	Up to 20:1	CAT 275Hp (205Kw)	Yes

* Depending on material density and set-up

Dimension Specification

Transport Dimensions			Working Dimensions		
Height	Width	Length	Width	Length	Weight (Est.)
4100mm (13'5")	2840mm (9'3")	13,290mm (43'7")	2840mm (9'3")	16,470mm (54')	19,500 Kgs (42,900 lbs)

623S

The Tesab 623S is a compact, wheeled, secondary crusher with the well proven 623 impact crushing unit at the heart of the machine. As this machine is the wheeled version of the 623CT it is also exceptionally good at producing excellent cubical shape and a high reduction rate. The reliability and consistency of this machine has also been proven over many years and it is unrivalled at providing a high quality end product at low tonnage costs.

The 623S features a 275Hp (205Kw) Caterpillar C9, 6 cylinder engine with a heavy duty impact crusher unit with 1100mm (42") diameter rotor and extra crushing and shaping path. An electric drive option is also available for this machine.

Suited for both secondary and tertiary applications the 623S can work standalone or integrate easily into existing crushing and screening operations.



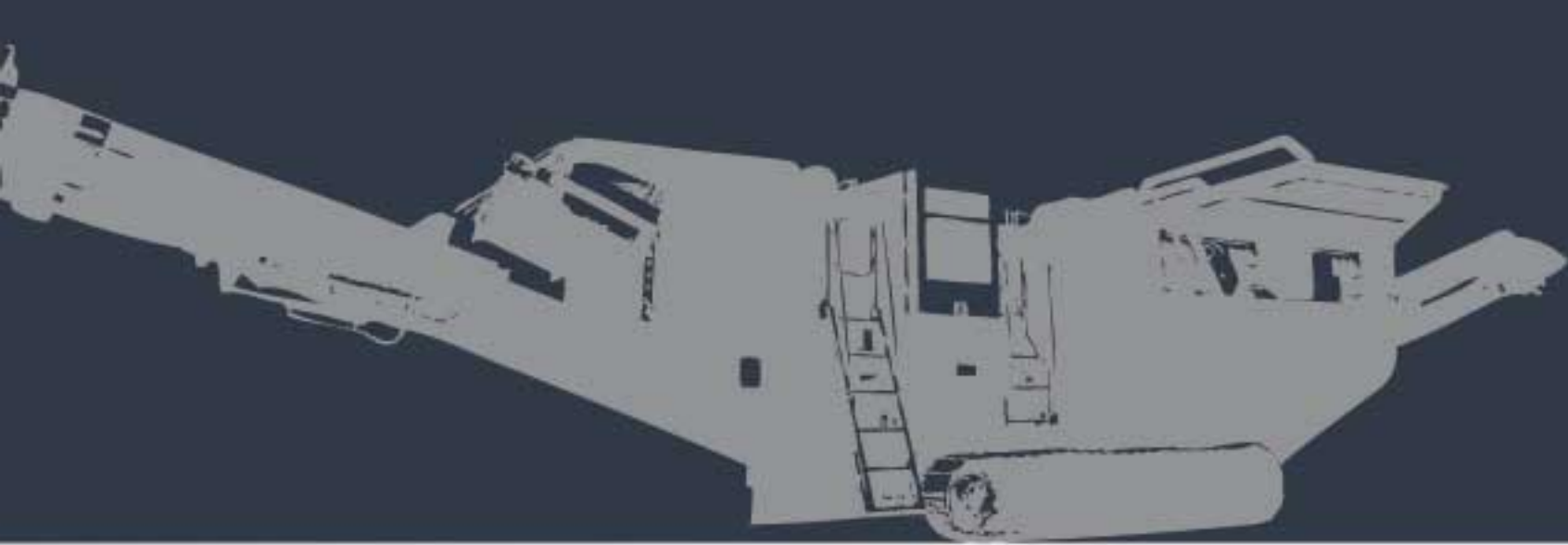
*Electric Drive option available.

Features & Benefits

- Up to 150+ tonnes per hour production rate
- Superior Cubical Shaped Product
- Fuel efficient Caterpillar engine
- Innovative design for fast setup and easy transportation

TESAB

Engineered for Power, Built to Last



Mobile Impact Crushers

643T Tracked Impact Crusher



Features & Benefits

- Up to 150+ tonnes per hour production rate
- Superior Cubical Shaped Product
- Fuel efficient Caterpillar engine
- Innovative design for fast setup and easy transportation



643T

The Tesab 643T is a compact, mobile, secondary crusher with a 6m³ (8cu.yd) hopper complete with a tipping grid and a single deck pre-screen to remove fines prior to the crusher.

The 643 concept is tailored for smaller scale operators looking for an all in one crusher producing consistent and high quality end product at a low cost per ton.

The 643T features a 275Hp (205Kw) Caterpillar C9, 6 cylinder engine with a heavy duty impact crusher unit with 1100mm (42") diameter rotor and extra crushing and shaping path.

Suited for both secondary and tertiary applications the 643T can work standalone or integrate easily into existing crushing and screening operations.



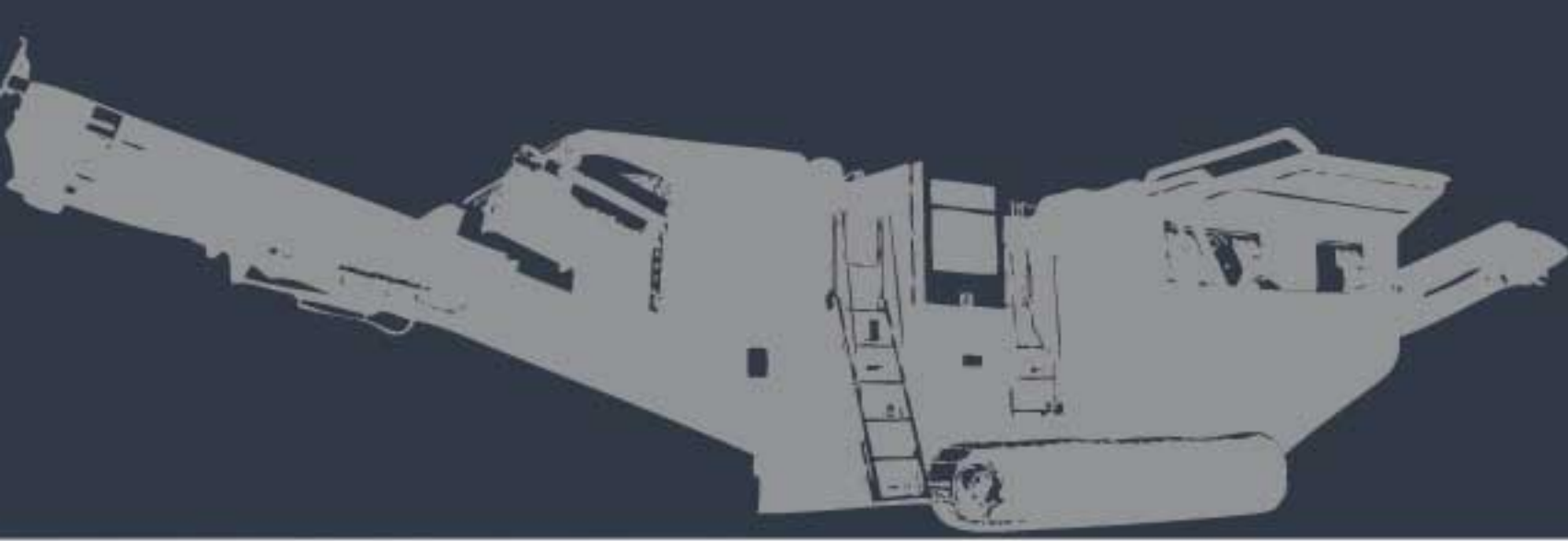
Performance Specification

Production Rate	Max Feed Size	Reduction Ratio	Engine Size	Feeder Belt
150+ TPH*	200mm (8')	Up to 20:1	CAT 275Hp (205Kw)	Yes

* Depending on material density and set-up

Dimension Specification

Transport Dimensions			Working Dimensions		
Height	Width	Length	Width	Length	Weight (Est.)
3850mm (12'7")	2850mm (9'4")	14,140mm (46'4")	2850mm (9'4")	16,550mm (54'4")	30,000kgs (66,199 lbs)



Mobile Impact Crushers

643S Wheeled Impact Crusher



Performance Specification

Production Rate	Max Feed Size	Reduction Ratio	Engine Size	Pre Screen
150+ TPH*	200mm (8")*	Up to 20:1	CAT 275Hp (205Kw)	Yes

* Depending on material density and set-up

Dimension Specification

Transport Dimensions			Working Dimensions		
Height	Width	Length	Width	Length	Weight (Est.)
4000mm (13'1")	2600mm (8'6")	14,300mm (46'10")	2850mm (9'4")	16,550mm (54'4")	23,500 Kgs (51,809 lbs)

643S

The Tesab 643S is a compact, wheeled, secondary crusher with a 6m³ (8cu.yd) hopper complete with a tipping grid and a single deck pre-screen to remove fines prior to the crusher.

The 643 concept is tailored for smaller scale operators looking for an all in one crusher producing consistent and high quality end product at a low cost per ton.

The 643S features a 275Hp (205Kw) Caterpillar C9, 6 cylinder engine with a heavy duty impact crusher unit with 1100mm (42") diameter rotor and extra crushing and shaping path.

Suited for both secondary and tertiary applications the 643S can work standalone or integrate easily into existing crushing and screening operations.

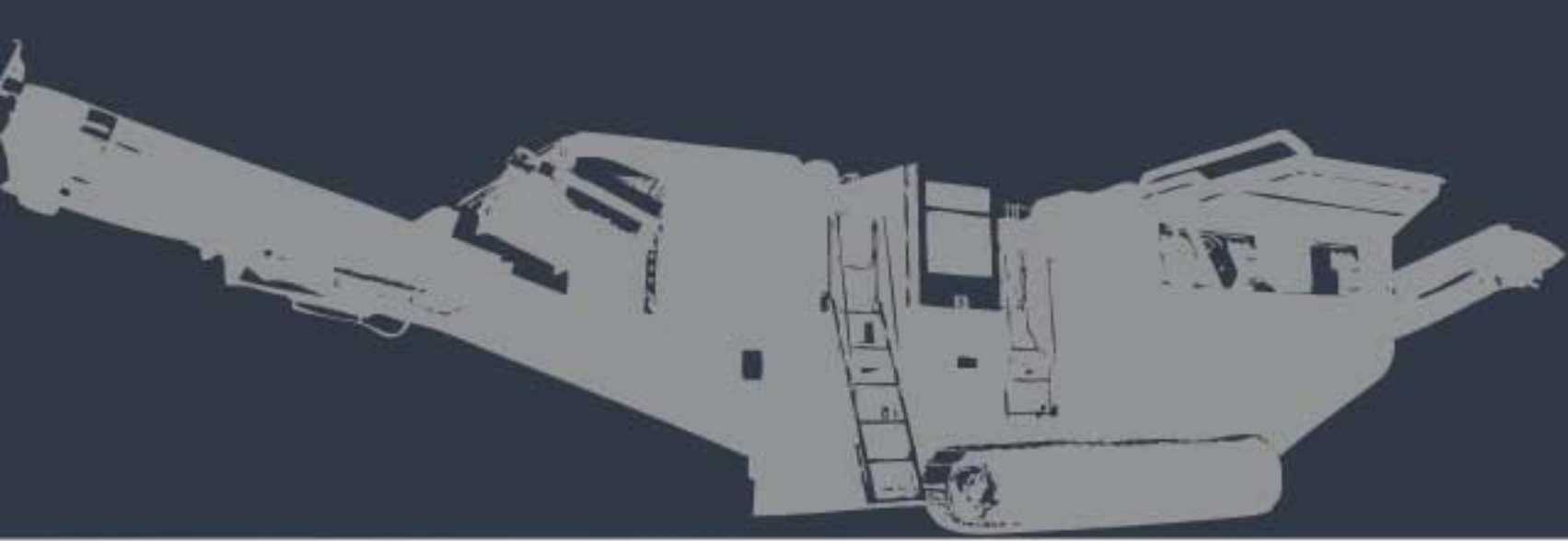


Features & Benefits

- Up to 150+ tonnes per hour production rate
- Superior Cubical Shaped Product
- Fuel efficient Caterpillar engine
- Innovative design for fast setup and easy transportation

TESAB

Engineered for Power, Built to Last



Mobile Impact Crushers

1012TS Tracked Impact Crusher



Features & Benefits

- Up to 350+ tonnes per hour production rate
- Superior Cubical Shaped Product
- Fuel efficient Caterpillar engine
- Innovative design for fast setup and easy transportation



1012TS

The Tesab 1012TS is a tracked mobile, large impact crusher designed to accept a large feed size whilst at the same time producing a consistent and high quality end product at a low cost per ton.

There is a x2 deck independent pre-screen fitted as standard which results in lower cost operation as a sized product can be produced on the side belt while at the same time reducing wear.

The 1012TS features a 440Hp (328Kw) Caterpillar C13, 6 cylinder engine with a heavy duty impact crusher unit with 1200mm (47") diameter rotor and extra crushing and shaping path.

Suited for both primary and secondary applications the 1012TS can work standalone or integrate easily into existing crushing and screening operations.



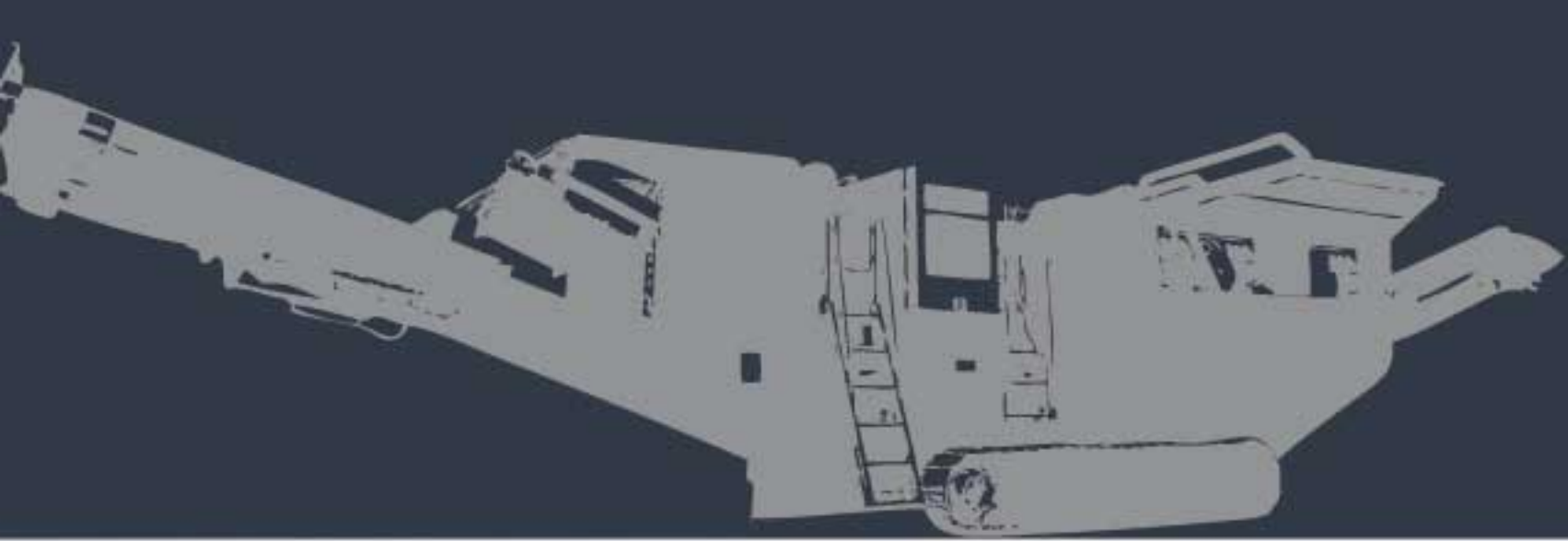
Performance Specification

Production Rate	Max Feed Size	Reduction Ratio	Engine Size	Pre Screen
350+ TPH*	500mm (20")*	Up to 20:1	CAT 440Hp (328Kw)	Yes

* Depending on material density and set-up

Dimension Specification

Transport Dimensions			Working Dimensions		
Height	Width	Length	Width	Length	Weight (Est.)
3800mm (12'5")	3100mm (10'2")	14,100mm (46'3")	2900mm (9'6")	15,700mm (51'6")	48,500kgs (106,924 lbs)



Mobile Impact Crushers

1012S Wheeled Impact Crusher



Performance Specification

Production Rate	Max Feed Size	Reduction Ratio	Engine Size	Pre Screen
350+ TPH*	500mm (20")*	Up to 20:1	CAT 275Hp (205Kw)**	Optional

* Depending on material density and set-up

** Option of having a CAT 440Hp (330Kw) engine

Dimension Specification

Transport Dimensions			Working Dimensions		
Height	Width	Length	Width	Length	Weight (Est.)
4230mm (13'10")	2940mm (9'7")	12,200mm (40')	2850mm (9'4")	15,000mm (49'2")	38,000 Kgs (83,776 lbs)

1012S

The Tesab 1012S is a wheeled mobile, large impact crusher designed to accept a large feed size whilst at the same time producing a consistent and high quality end product at a low cost per ton.

There is a heavy duty feed hopper and integrated grizzly, along with side dirt belt as standard.

The 1012S features a 275Hp (205Kw) Caterpillar C9, 6 cylinder engine with a heavy duty impact crusher unit with 1200mm (47") diameter rotor and extra crushing and shaping path. An electric drive option is also available for this machine.

Suited for both primary and secondary applications the 1012S can work standalone or integrate easily into existing crushing and screening operations.



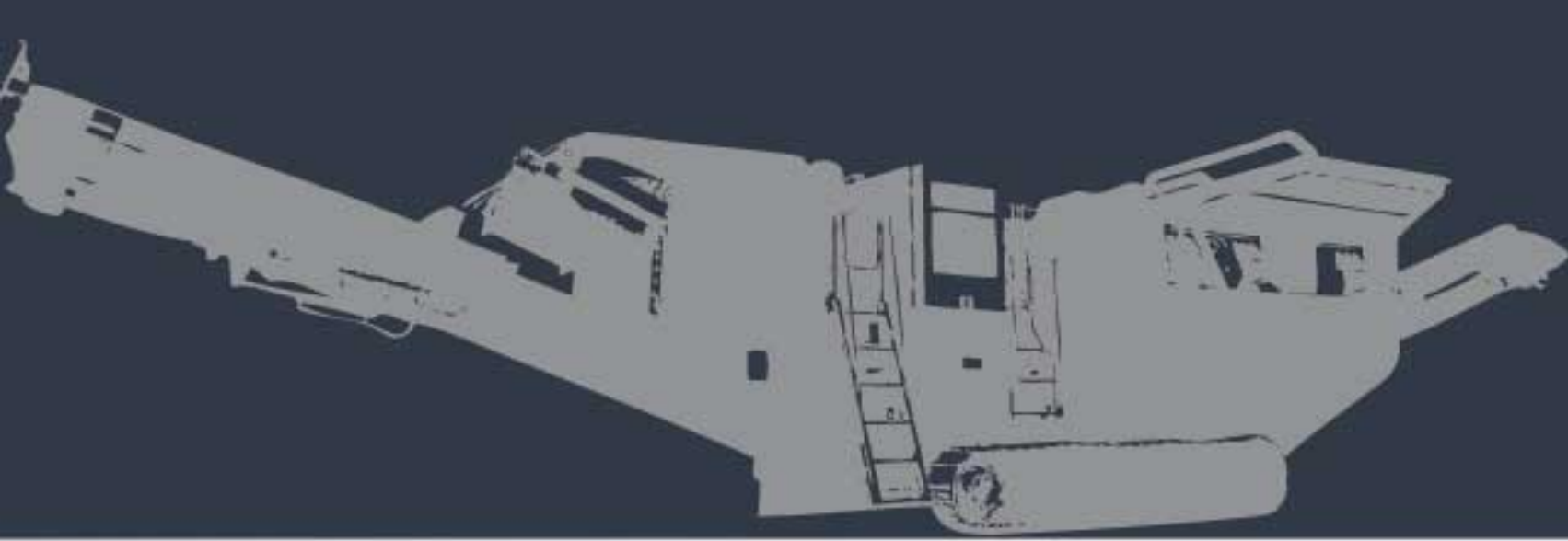
*Electric Drive Option

Features & Benefits

- Up to 350+ tonnes per hour production rate, depending on set-up
- 2 deck independent pre-screen available as an option
- Fuel efficient Caterpillar engine
- Innovative design for fast setup and easy transportation

TESAB

Engineered for Power, Built to Last



Mobile Impact Crushers

1412T Tracked Impact Crusher



Features & Benefits

- Up to 350+ tonnes per hour production rate
- Superior Cubical Shaped Product
- Fuel efficient Caterpillar engine
- Innovative design for fast setup and easy transportation



Engineered for Power, Built to Last

1412T

The Tesab 1412T is a tracked mobile, large secondary impact crusher designed to accept a wide variety of material sizes.

The machine is fitted with a heavy duty feed hopper and belt feeder design. The crusher unit incorporates the unique Tesab crushing path design which produces a high reduction ratio along with a superior cubic shaped product.

The 1412T features a 440Hp (328Kw) Caterpillar C13, 6 cylinder engine. The heavy duty crusher unit has a 1200mm (47") diameter rotor along with an extra crushing and shaping path.

Suited for both secondary and tertiary applications the 1412T can work standalone or integrate easily into existing crushing and screening operations.



Performance Specification

Production Rate	Max Feed Size	Reduction Ratio	Engine Size	Feeder Belt
350+ TPH*	300mm (12")*	Up to 20:1	CAT 440Hp (328Kw)	Yes

* Depending on material density and set-up

Dimension Specification

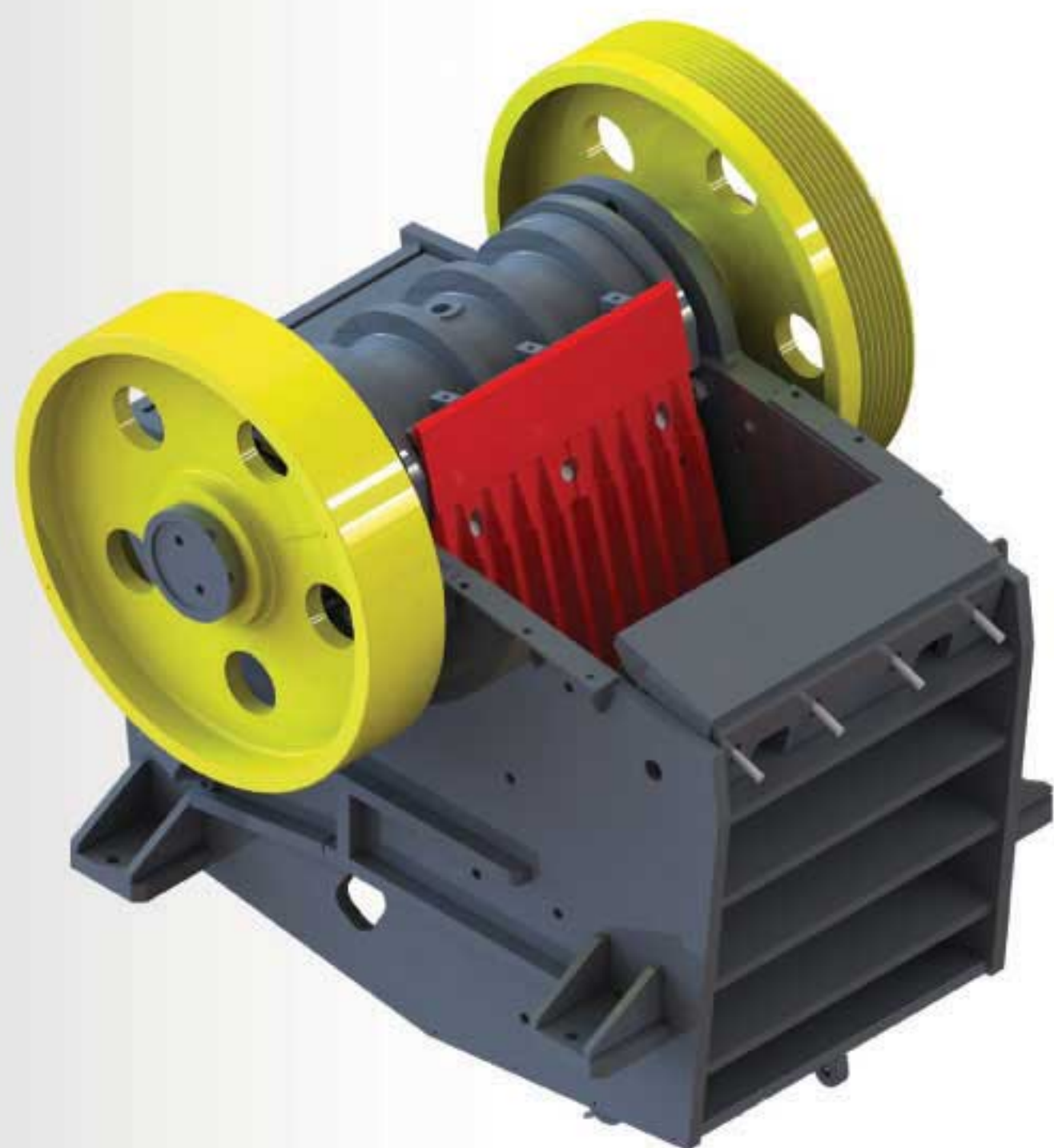
Transport Dimensions			Working Dimensions		
Height	Width	Length	Width	Length	Weight (Est.)
3520mm (11'6")	3300mm (10'9")	15,100mm (49'6")	3850mm (12'7")	17,030mm (55'10")	45,000kgs (99,208 lbs)

Static and Modular Crusher Units

Tesab can supply all crushers as individual units or part of a modular crushing system. Each crusher unit has the same great benefits and performance that's provided by the mobile machines.

With a simple yet efficient drive design the crusher units can be easily and quickly incorporated into a wide variety of fixed crushing applications. Electric and hydraulic drive options, plus fully customised static mounts, are also available.

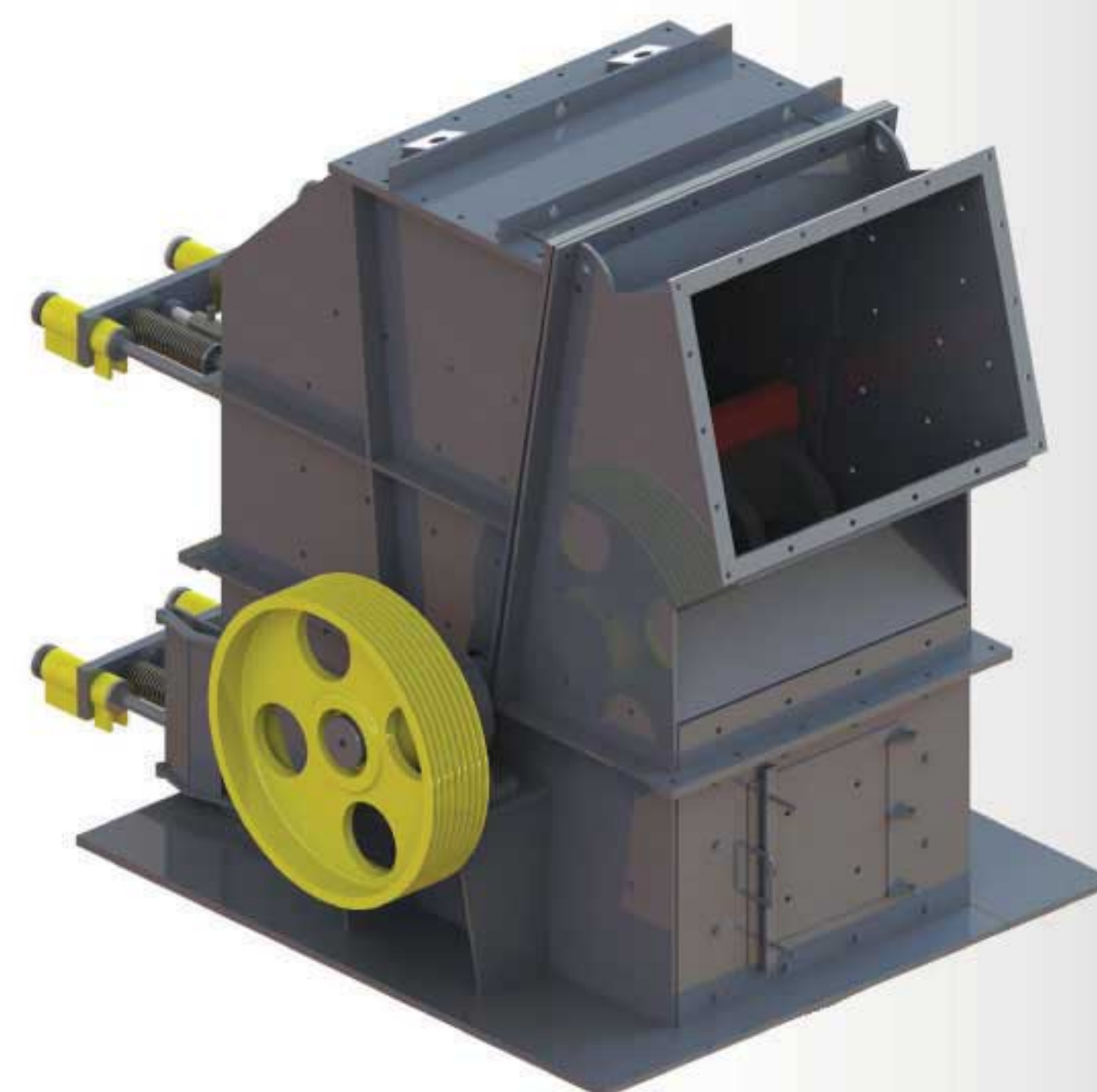
So, whether you're creating a new plant or need a high performance, heavy duty crusher for an existing system, we have a crusher to suit you.



Jaw Crusher Units



Cone Crusher Units



Impact Crusher Units

TESAB

Engineered for Power, Built to Last

TESAB

Genuine Spare Parts



A Fast Replacement Parts Service when you need it.

While all Tesab products are manufactured from high quality components, from time to time some parts may need replacing. If that happens, you can be rest assured that replacement parts will be available to you on demand.

We hold a large stock of genuine replacement parts in our manufacturing facility and have access to many more from our suppliers. With a dedicated and vastly experienced spare parts team, our aim is to always get you up and running as fast as possible.

For spares parts call 00 44 (0) 28 8225 2781 or email spares@tesab.co.uk

TESAB

Global Network



With worldwide coverage and established distribution networks, Tesab have sold products in the remotest of locations through its global network with offices located in Europe, Asia, Africa, North America, South America, Australia and Russia.

Tesab
Unit 9
Gortrush Industrial Estate
Omagh
County Tyrone
Northern Ireland
BT78 5EJ

Tel: +44 (0)28 82 252 781
Fax: +44 (0)28 82 252 801
sales@tesab.co.uk
www.tesab.com



Authorised Dealer