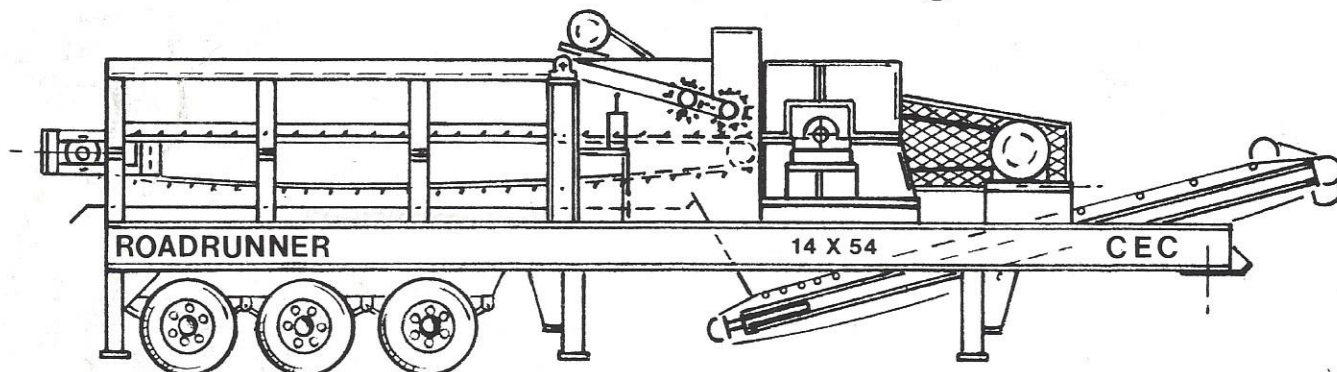




**Construction Equipment Co.  
14" x 54" Feed Opening  
Portable Wood Hog**



**Recycle Demolition Wood Waste Materials**

***Wood Hog - Horizontal Feed***

- 34" Diameter & 54" Wide Rotor
- 14" x 54" Feed Opening
- Replaceable Cutter on Rotor
- Metal Trap for Nails & Bolts
- Discharge Grates for Product Sizing
- Capacity 10 to 50 Tons Per Hour Wood
- 300 Hp TEFC Motor - Drive & Guards

***Power Feed Mechanism***

- Dual Spiked Powered Top Rolls
- Rolls Pivot on Heavy Duty Steel Frames
- Positive Feed Pressure is Controlled by Air Cylinders
- Power Feed Motor Product Flow

***Feed System***

- 3 Dual Cross Bar Chains Provide Six Pull Chains
- Connecting Bars & Spikes Pull Material Evenly to Feed Rolls
- Feed Chain Run on UHMW Feeder Bed
- 25 Hp Variable Speed Feeder Drive - 30 to 50 FPM Chain Speed
- Feeder is 54" Wide
- Feeder is 24 feet long



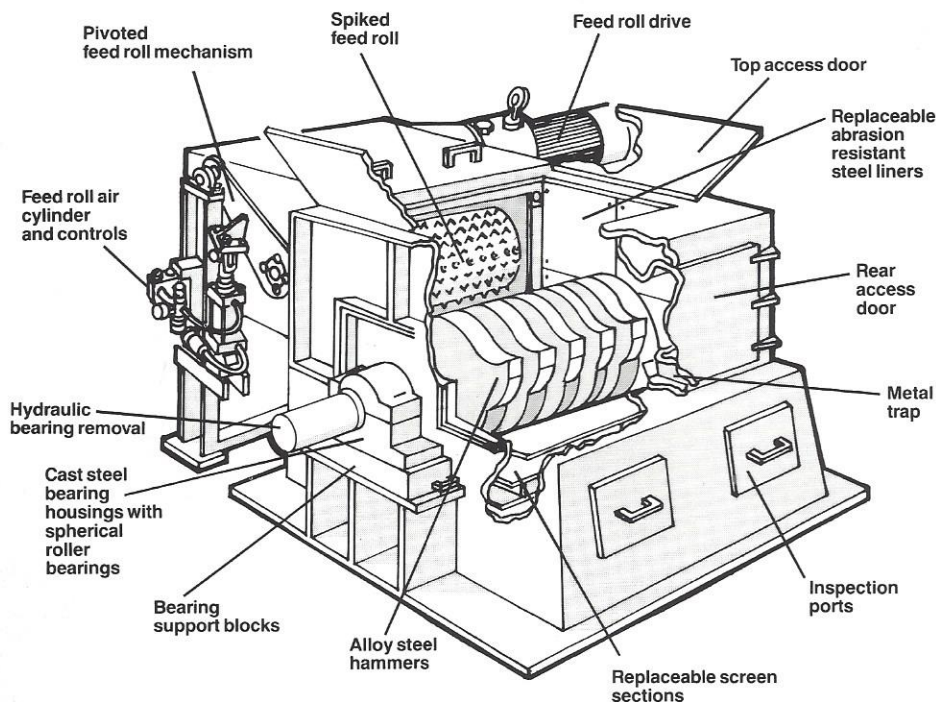
**Construction Equipment Co.**

## Carrier Frame

- Heavy Duty I-Beam Construction
- Spring Suspension - Air Break
- 1000×20 Tires & Wheels - Oil-Filled Hubs
- Lights - Flaps - Turn Signals
- Fifth Wheel Pull
- Six Support Legs for Operation
- Weight as Pictured 65,000 lbs.

## Discharge Conveyor

- 48" Wide Conveyor 15 Hp
- Torque Arm Gear Box
- Rubber-Legged Head Pulley
- Winged Tail Pulley
- 35 Degree Troughing Idlers
- Curved Conveyor Belt
- Belt Speed 200 to 400 FPM



### ■ Productive

Processes wide range of wood waste material into a saleable product.

### ■ Versatile

Easily handles long, large, or stringy materials.

### ■ Efficient

Low profile, metered infeed saves on space and horsepower.

### ■ Effective

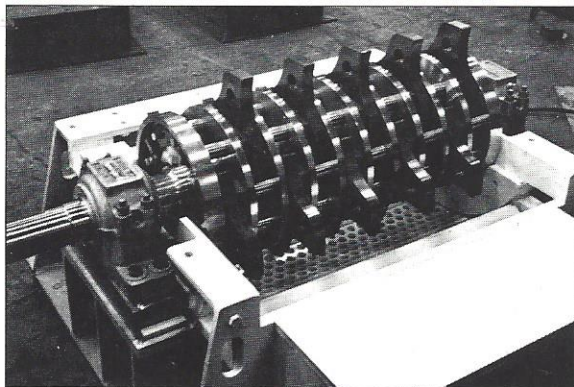
Screens can be set up to produce material sized for available markets.

### ■ Rugged

Heavy-duty construction and intelligent design reduces maintenance expense.

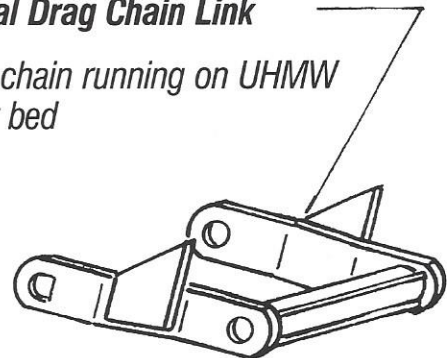
### ■ Proven

Large base of installed units in a variety of applications.



## Typical Drag Chain Link

Triple chain running on UHMW under bed





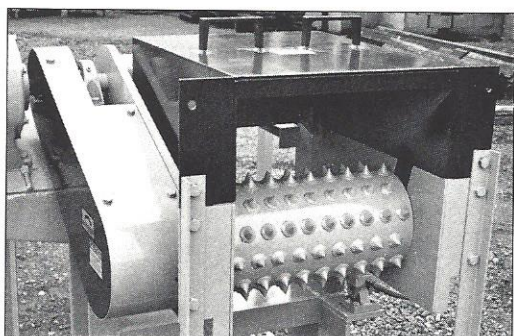
# WASTE BECOMES PROFIT

## *Processed Wood Waste Materials*

- *Slabwood*
- *Trim ends*
- *Edgings*
- *Stringy bark*
- *Panel trim*
- *LVL/plywood trim*
- *Dry veneer trim*
- *Joist trim*
- *Log yard debris*
- *Pallets*
- *Demolition waste*
- *Dunnage*

## *Saleable Products*

- *Boiler fuel*
- *Landscape material*
- *Soil amendment*
- *Animal bedding*
- *Mulch*
- *Particle board/MDF furnish*
- *Compost bulking agent*
- *Pellet fuel furnish*



### ***Powered Feed Mechanism***

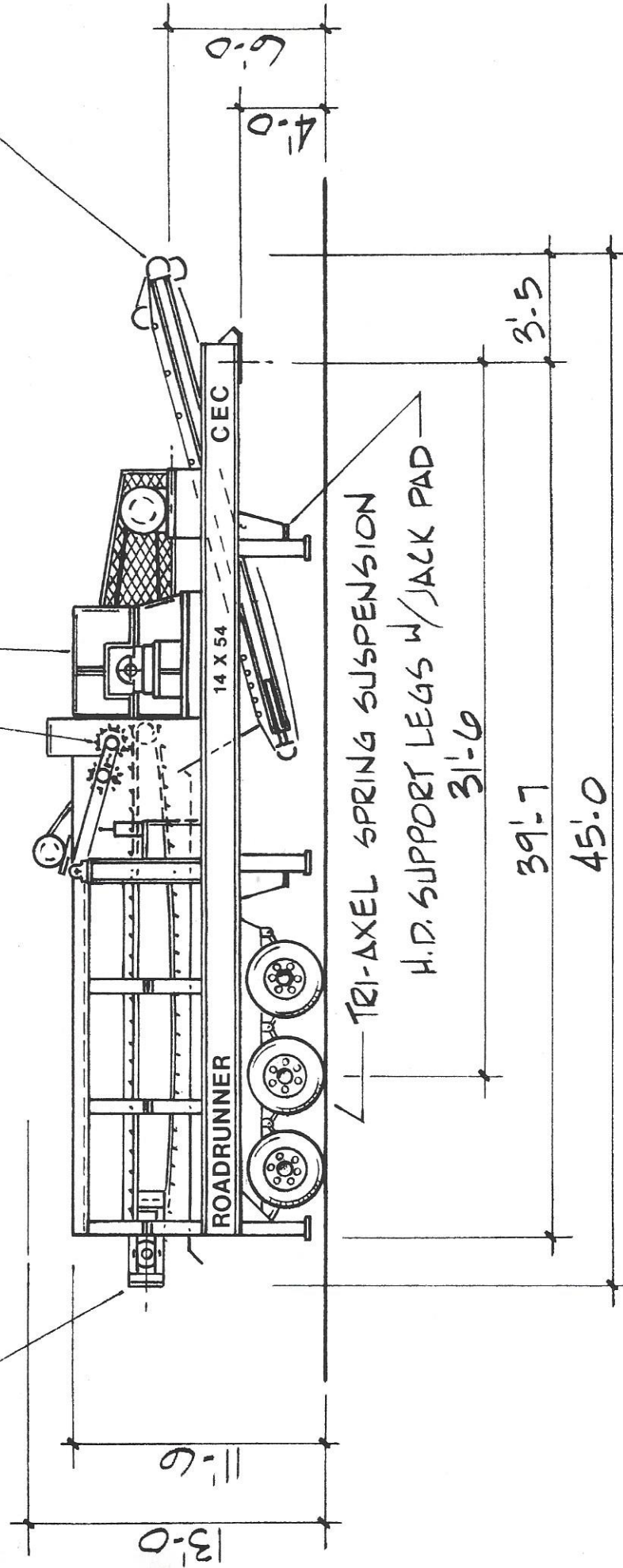
The powered feed mechanism is a key component in the operation of the horizontal hog. This mechanism consists of a powered, spiked feed roll assembly mounted on a pivoted steel frame. The pivoted frame uses an air cylinder (with pneumatic controls) to adjust to various depths and sizes of material while maintaining a positive downward pressure.

POWERED FEED MECHANISM  
W/ 2-PIVOTING SPIKED FEED ROLLS

DRAG CHAIN TYPE FEED CONVEYOR  
W/ TRIPLE WIDE DRAG CHAIN ON  
U.H.M.W. LINER

HORIZONTAL SHAFT  
WOOD & BARK HOG  
W/ ELECT. MOTOR DRIVE

48" DISCHARGE CONVEYOR



TRI-AXEL SPRING SUSPENSION  
H.D. SUPPORT LEGS W/ JACK PAD  
31'-6"



**Construction Equipment Co.**  
P.O. Box 1271  
Lake Grove, Oregon 97035  
503-635-4427  
Fax 503-635-7819

**Area Dealer**