

CONE CRUSHER

Exceptional Portability | Simplified Operation | Maximum Compatibility

TRACK MOUNTED CRUSHING PLANT



The FT300DF provides maximum cone crushing productivity on a versatile track mounted carrier. The FT300 employs a Kodiak K300+ Cone Crusher, which produces crushing volumes of up to 460 TPH and delivers efficient material sizing, making it perfect for both mobile and stationary producers who need quick set-up and mobilization times. The FT300DF's variable speed belt feeder allows the plant to either be fed by conveyor belt or excavator, dramatically increasing the ways the plant can be incorporated into your operation. A dust suppression system, return conveyor to close circuit the plant, engine bag house, wireless handheld remote and other options allow you customize the plant to fit your specific application.

CONE CRUSHER

MODEL FT300DF

36" BELT
(914mm)

Variable speed belt feeder,
heavy duty grade 1 belting

440 HP
(328 kw)

Cat engine provides power for
crusher and on-board conveyors

9'4" X 46'8 1/2"
(2.85m x 14.24cm)

Operating Footprint

UP TO 460 TPH
(417mtp/h)

Up to 460 TPH,
Maximum TPH at 2" CSS

PERFORMANCE

- P1 Low Profile**
Designed to simply drive off transport and begin crushing.
- P2 Compact Design**
System transports on standard low-boy, making it easy to transport.

EASE-OF-USE

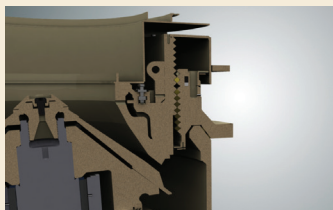
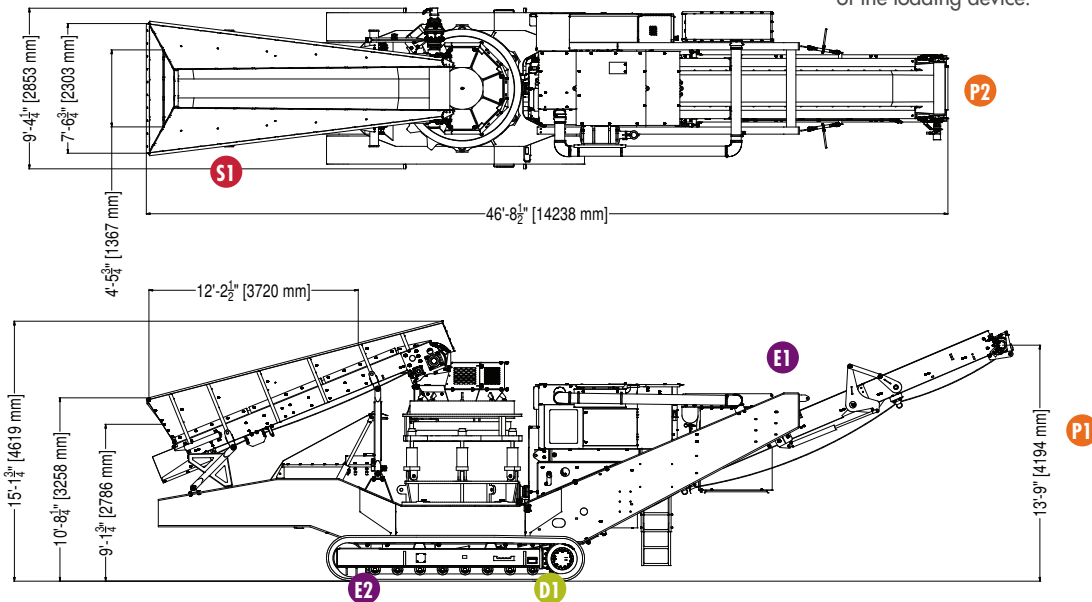
- E1 Minimal Site Prep**
Spend time unloading and stockpiling instead.
- E2 On-Site Portable**
These plants quickly relocate at the job site.

DURABILITY

- D1 Heavy-Duty Tracks**
Extremely durable and mobile.

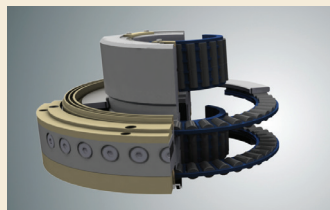
SAFETY

- S1 Minimize Exposure**
Once positioned, the operator can feed the plant from the safety of the loading device.



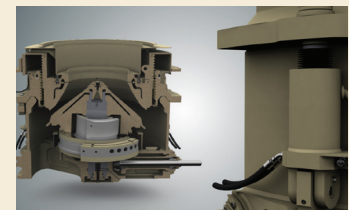
CRUSHING CHAMBER

Ideal combination of geometry, stroke and speed for aggressive and forgiving performance.



INTERNAL COUNTERWEIGHTS

Our patented internal counterweights are out of the material stream and never need re-balancing.



OVERLOAD PROTECTION

Our patented tramp iron relief system protects the crusher from costly failures while preventing back-pressure.

www.kpijci.com

PART OF THE FAST TRAX SYSTEM®

Combine with the FT2650 Jaw and the FT6203 Screen for a portable crushing and screening system.

SERVICE MADE EASY

Because we're dedicated to keeping you up and running, we've provided two resources for quality O.E.M. parts and 24/7 service. KPI-JCI and Astec Mobile Screens parts and service are available from your local dealer and/or representative.

Find the dealer or representative nearest you at www.kpijci.com.

Because KPI-JCI and Astec Mobile Screens may use in its catalog and literature, field photographs of their products which may have been modified by the owners, products furnished by KPI-JCI and Astec Mobile Screens may not necessarily be as illustrated therein. Also, the continuous design progress makes it necessary that specifications be subject to change without notice. All sales of the products of KPI-JCI and Astec Mobile Screens are subject to the provisions of their standard warranties. KPI-JCI and Astec Mobile Screens do not warrant or represent that their products meet any federal, state, or local statutes, codes, ordinances, rules, standards or other regulations, including OSHA and MSHA, covering safety, pollution, electrical, wiring, etc. Compliance with these statutes and regulations is the responsibility of the user and will be dependent upon the area and the use to which the product is put by the user. In some photographs, guards may have been removed for illustrative purposes only. This equipment should not be operated without all guards attached in their normal position. Placement of guards and other safety equipment is often dependent upon the area and the use to which the product is put. A safety study should be made by the user of the application, and, if required, additional guards, warning signs, and other safety devices should be installed by the user, wherever appropriate before operating the products.

NOTE: SPECIFICATIONS ARE SUBJECT TO CHANGE WITHOUT NOTICE

Rev_11/2012