

WC SERIES TUB GRINDERS



MODEL
WTC-1354L

WC Series Trailer Mounted
HogZilla's offer BIG machine power
in a smaller mid-sized package with
reduced transport weight for simplified transport.

*WC Models include Portable Models, & grinders
with Mounted Knuckle-Boom loaders.*



MODEL WTC-1454P

The features that make HogZilla the preferred grinder for reliability & productivity are included in this smaller but very capable machine.

The **WC Series** utilizes a Hydraulic **Wet Clutch** to transfer power from the engine to the hammermill with electronic engagement.



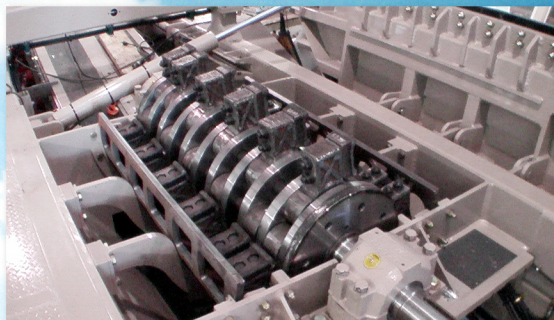
MODEL WTC-1454P

In applications where little support equipment is available, mounted loaders are a wonderful addition to a mobile grinding operation. CW offers a wide variety of choices in mounted loaders to support WC Series grinders.



WTC-1454L MODEL

CWs commitment to providing the best industrial tub grinders carries through to the smaller mid-sized WC series with a slightly shorter length hammermill, but is still more than worthy of being called a **MONSTER** Tub Grinder!



Many Thrown Object Restraint System options are available & can be installed on a new or existing grinder. Installation can be completed at the factory or in the field.

Standard Equipment

- Hydraulic PTO
- Radio Remote Control
- Radiator Precleaner Enclosure
- Engine Enclosure
- Vandalism Lock Package
- Lockable Tool Boxes

Optional Equipment

- Track Drive
- Torque Converter
- Mounted Grapple Loader
- Radial Stacking Elevator
- Custom Thrown Object Restraint
- 5yr/6000hr Engine Warranty
- Bolt-In Tire Grinding Package
- Hydraulic Rod Puller
- 9 HP Auxiliary Power Unit Includes:
 - Air Compressor
 - Service Hydraulic Pump

Additional options with custom variations available upon request. Some options influence the capabilities, safety, weight, performance, & portability of the machine.

WC SERIES



MODEL WTC-1454L

MODEL WTC-1354L

Estimated Maximum Production Range

(tons per hour*)

Yardwaste - 75-130

Stumps & Logs - 40-100

Pallet/Construction Waste - 30-100

*Any stated production information is estimated & is subject to variables that may fluctuate. Machine configurations include performance option that are changeable, and the actual materials being processed may differ resulting in actual production variations. Other production variables include user-based circumstances such as specific job site set up, material input procedures, & operational setting adjustments.



MODEL WTC-1454P

SPECIFICATIONS	WC-1354P	WC-1354L
CAT C32 (Standard Engine)	1000 hp	1000 hp
Hammermill Diameter	31" x 54"	31" x 54"
Screen Area	3321 sq. in.	3321 sq. in.
Screen Thickness (Std/Max)	1"	1"
Hammer Weight	50 lbs.	50 lbs.
Hammer Number	24	24
Rod Diameter	2"	2"
Tub Top Width (Standard)	13'	13'
Conveyor/Elevator Belts	36" & 36" WIDE	36" & 36" WIDE
Trans. Width	11' - 11"	11' - 11"
Trans. Length	37'	37'
Total Weight (Approximately, Based on Options)	88,000 lbs.	98,000 lbs.

Specifications subject to change without notice. As improvements are made, actual product offered for sale may vary in design.

CW MILL EQUIPMENT CO., INC.

14 Commerce Dr., Sabetha, KS 66534

785-284-3454 or 800-743-3491 Fax: 785-284-3601

Web: www.hogzilla.com Email: hogzilla@cwmill.com

LET'S CONNECT.

