



# HTC-1462T TRACK MOUNTED TUB GRINDERS

**UNPARALLELED**  
*in Production, Mobility,  
and Transport.*



The HTC-1462T is a popular choice for the producers who require simplified transport. Although sized down some to reduce transport weight, the HTC-1462T does share many features with the larger, top of the line, HTC-1464T. The HTC-1462T is able to be powered by the same size engine & torque converter, operated by the same hydraulic system, and is mounted on the same track drive system. The hammermill assembly, tub, and discharge conveyor system are from the standard mid-sized HC-Series of grinding machines. This combination maximizes the power and performance that can be made available when focusing on speed and ease of transport.



- Allows grinding in wet weather or on soft terrain.
- Eliminates building roads to get the grinder moved in.
- Eliminates towing a truck and grinder on the job site.
- You can position the grinder to achieve maximum production.



*A HogZilla on tracks allows for convenient one-person operation and saves hours a day mobilizing the grinder from pile to pile.*





# HTC-1462T SPECIFICATIONS

Horsepower	CAT 1000 (Standard)
Torque Converter	1200HP Rated
Hammermill Diameter	31"
Feed Opening	30.5" x 62"
Screen Area	3813 sq. in.
Screen Thickness	1"
Hammer Weight	48 lbs.
Hammer Number	24 - 48
Rod Diameter	2"
Tub Top Width	14'
Belly Conveyor	3 ea. 12" Augers
Stacking Elevator	42" x 24'
Trans. Width	11' - 11"
Trans. Length	45'
Total Weight(approx.)	93,000 lbs.

Specifications subject to change without notice. As improvements are made, actual product offered for sale may vary in design.

## Estimated Maximum Production Range

(tons per hour )

Yardwaste - 100-150

Stumps & Logs - 50-100

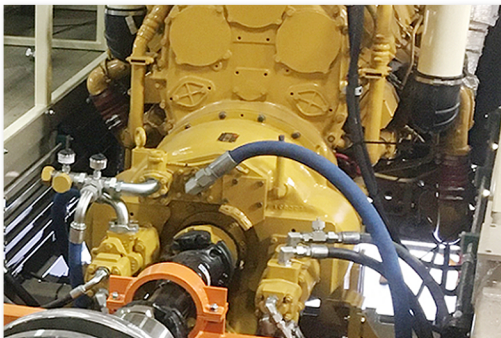
Pallet/Construction Waste - 35-120

Any stated production information is estimated and is subject to variables that may fluctuate. Machine configurations include performance options that are changeable, and the actual materials being processed may differ resulting in actual production variations. Other production variables include user-based circumstances such as specific job site set up, material input procedures, & operational setting adjustments.

## Torque Converter Drive –

The engine is protected by the torque converter fluid absorbing shock loads and torsional vibrations from the hammermill assuring longer engine and drive system life.

An optional Hydraulic Coupling or Wet Clutch are also available.



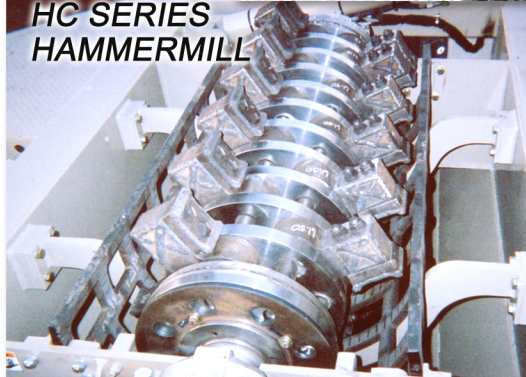
**CAT 325L Tracks are Standard**

*Hydrostatic Tracks allow for easier navigation in tight areas.*



**HC SERIES HAMMERMILL**

**One-Person Operation with Remote Control**



**A Remote Controlled Dual Hydrostatic Drive is used to drive the tracks.**

**The operator of the loader or excavator can stay safely inside the cab while moving the Hogzilla Grinder to different locations allowing one-person operation.**



**CW Mill Equipment Co., Inc.**

14 Commerce Drive, Sabetha, KS USA

**800.743.3491** or 785.284.3454

Email: [hogzilla@cwmill.com](mailto:hogzilla@cwmill.com)

Web: [www.hogzilla.com](http://www.hogzilla.com)

**LET'S CONNECT.**

