

RM-SERIES CONVEYOR

Model: RM-2318

THE READY MIX & CONCRETE COMPANION



Conveyor

18" Wide Belt
35 Degree Troughed Belt
Heavy Duty 4" CEMA C Idlers
Adjustable Belt Tension
1-1/2" Tall Chevron Cleated Belt
1.5 cubic ft. Loading Hopper

Portable Undercarriage

Adjustable Scissor Lifting Arms
Tow-able Hitch
3500 lbs capacity Axle
Conveyor Rest
Hydraulic Incline lift adjustment
Hydraulic Hand Pump

POWER DRIVE

110V Power
or
Honda Gas Engine



15 FEET MAX
7 FEET MIN

LOADING

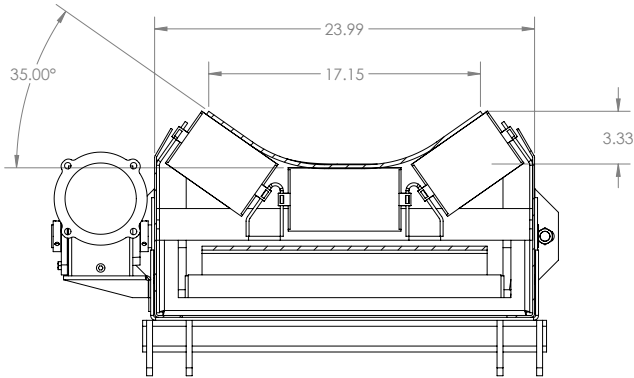
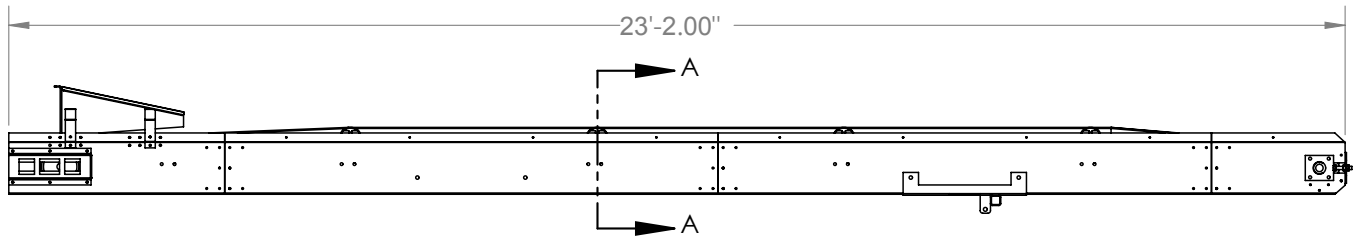
Ice, Steel Fibers,
Pigment and more

PORTABLE DOSING



Redline
SYSTEMS INC

23' CONVEYOR DETAIL



Detail A

Note:
Belt Cleats not Shown

RM-2318 Model

23' Conveyor Length
15 ft. Tall Discharge Height
Discharge Height Adjustment down to 7 ft.
Includes Loading Hopper
Steep Climb Belt 1-1/2" Tall Chevron Cleat
18" Wide Belt 2 ply Rubber Belt
Standard with Electric Motor Drive
Heavy Duty 8" OD Lagged Drive Pulley

Engineered Design

Heavy Duty 4" CEMA C ROLLERS
35 Degree Trough Angle
Modular Frame
Optional Lengths and Accessories
Belt speeds up to 300 Feet Per minute
Easy Maintenance
Grease-able Block Bearings

Power Supply Options

110v single phase
220v single phase
240v 3 phase
460v 3 phase
Gas Engine Drive
Diesel Engine Drive
Hydraulic Power Pack

ACCESSORIES / OPTIONS



DISCHARGE HOPPER/CHUTE



HOPPER DECK WITH BLADE



TRAILER TOW LIGHTS



CUSTOM HOPPERS



CUSTOM CONTROL PANELS



OPTIONAL CASTERS



WHEEL FENDERS



SUPER SACK SHREDDER

Componant Specifications

Troughing Idlers	4" OD CEMA C - 35 degree trough - Sealed
Return Rollers	3" OD with 5/8" Greasable Pillow Block Bearing
Belt Width	18 inches
Belt Effective Width	16 inches
Belt	2 Ply 150lb. 1/16in x 1/32in
Drive Pulley	8.75" OD 3/8" thick herringbone lagging
Drive shaft	1-7/16" OD
Tail Pulley	8" OD Crowned Winged
Tail Shaft	1-1/4" OD
Undercarriage coupler	2" Ball
Und. Hand pump Stroke output	1.21 Cubic inches per pump - double acting
Und. Cylinder	2.5" Bore
Axle	3500 lb. Capacity Axle. with 275 Radial Tire

1.5 HP 110/220v 1PH with 25:1 Gear Reducer

Horse Power	1.5
FLA - Motor Start Amps (empty belt)	15.5 amps (on 110v line)
Running Amps	9.7 amp (on 110v line)
Gearbox Reduction	25:1
Output Torque	1085 in. lbs.
Motor Service Factor	1.6
Belt Speed	Continuous 150 feet per minute
Max Weight Capacity on Belt	500 lbs.

GX160 Honda Gas Engine

Engine Size	160 CC (4.8 Horse Power)
Engine Start	Recoil
Engine Type	Air-cooled 4-stroke OHV
Fuel	Unleaded 86 octane or higher
Fuel Tank Capacity	3.3 U.S. qts (3.1 liters)
Oil Capacity	0.61 US qt. (0.58 L)
Belt Speed @ 3600 RPM	160 Feet Per Minute

