

# PORTABLE PLANTS



[superior-ind.com/portable-plants](http://superior-ind.com/portable-plants)



# TABLE OF CONTENTS

4	Jaw Crusher Plants
6	Cone Crusher Plants - Open Circuit
11	Cone Crusher Plants - Closed Circuit (CC)
13	VSI Portable Plants
17	HSI Portable Plants
18	HSI Plants - Closed Circuit (CC)
19	Screen Plants - Single Screen
20	Screen Plants - Tandem
21	Screen Plants - Overhead Feed Conveyor
22	Anthem Screen Plants
24	Wash Screw Plants
25	Aggredry Wash Plants
27	Spirit Sand Plants
28	Pug Mill
29	Portable Feed Hoppers
30	Riprap Plants
31	Full Portable Plant Spreads
32	Portable Plants - Case Study





# PORTABLE PLANTS

## THE PROCESS



### 01/ CUSTOMER CONSULTATION

Superior's sales and applications teams work with you to define production goals, footprint, and any limitations like water.



### 02/ PLANT OPTIMIZATION

Using AggFlow, the most sophisticated and complete plant flow simulation program available today, equipment types and settings are tested for a fully optimized plant that maximizes production.



### 03/ 2D DESIGN LAYOUT

Using a customer-approved AggFlow, a plant layout is created to provide a clear vision of the plant configuration and size.



### 04/ 2D GOOGLE EARTH LAYOUT

In situations where necessary or upon request, the proposed 2D plant design can be viewed on a site using Google Earth.



### 05/ FACTORY ASSEMBLY

Plant structure is fully assembled and the equipment is tested to enable easy mobility on-site.



### 06/ TRANSPORT OPTIONS

Plants are designed to meet each state's road requirements to allow for easy transportation to any destination.



### 07/ FIELD COMMISSIONING

Superior Industries' service team or authorized technicians assist with the setup of the portable plant at the customer's site, ensuring precise calibration and optimal operation of the equipment.

# JAW CRUSHER PLANTS



## LIBERTY® JAW CRUSHER PLANTS

SPECIFICATIONS					
Model #	Main Equipment	Capacity STPH (MTPH)	Suspension	Weight lb (kg)	
2636BFD	2636 Liberty® Jaw Crusher 36x17 Intrepid® VGF	120 - 395 (110 - 360)	3 Axle	95,500 (43,318)	
2155BFD	2155 Liberty® Jaw Crusher 54x20 Intrepid® VGF	110 - 385 (100 - 350)	4 Axle	125,100 (56,744)	
3042BFD	3042 Liberty® Jaw Crusher 42x20 Intrepid® VGF	165 - 500 (150 - 450)	3 Axle	104,900 (47,582)	
3343BFD	3343 Liberty® Jaw Crusher 42x20 Intrepid® VGF	200 - 680 (240 - 620)	4 Axle	122,500 (55,565)	
3055BFD	3055 Liberty® Jaw Crusher 54x20 Intrepid® VGF	265 - 750 (240 - 680)	Call Factory	149,200 (67,675)	
3448BFD	3448 Liberty® Jaw Crusher 48x20 Intrepid® VGF	353 - 827 (320 - 750)	4 Axle	Call Factory	
3455BFD	3455 Liberty® Jaw Crusher 54x20 Intrepid® VGF	353 - 800 (320 - 800)	Call Factory	Call Factory	
4051BFD	4051 Liberty® Jaw Crusher 48x20 Intrepid® VGF	320 - 970 (290 - 880)	Call Factory	Call Factory	
4655BFD	4655 Liberty® Jaw Crusher 54x20 Intrepid® VGF	440 - 990 (400 - 900)	Call Factory	Call Factory	

# JAW CRUSHER PLANT - OPTIONS

## PLANT OPTIONS LISTED BELOW\*

- » Hopper Wings
- » Hydraulic Leveling Legs
- » Hydraulic Run-On Legs
- » Lower Observation Platform (included)
- » Upper Observation Platform
- » Self Closing Hinged Gate
- » Sliding Ladder
- » Steep Angle Stairs (included)
- » Grease Stations
- » Tool Box
- » Cord Holders
- » Air Ride Suspension
- » Walking Beam Suspension
- » Tow Eye
- » Hydraulic Discharge Conveyor
- » Control Panel
- » Wireless Remote
- » Grizzly Fines Cross Conveyor
- » Primary Scraper
- » Vulcanized Splice
- » Class II Drive
- » Impact Bed
- » Impact Cradle
- » Seal System
- » Fines Conveyor Seal System
- » Hydraulic Tail Section
- » Auto Grease System
- » Bearing Temperature Sensors

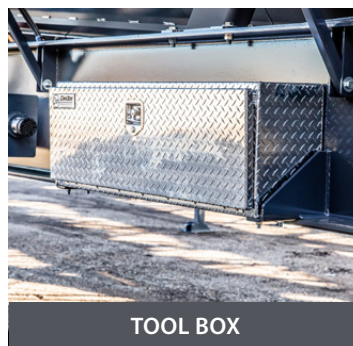
*\* Options subject to change since date of publication*



GREASE STATIONS



CORD HOLDERS



TOOL BOX



TOW EYE



HYDRAULIC RUN-ON LEGS



HYDRAULIC LEVELING LEGS



CONTROL PANEL



UPPER OBSERVATION - JAW



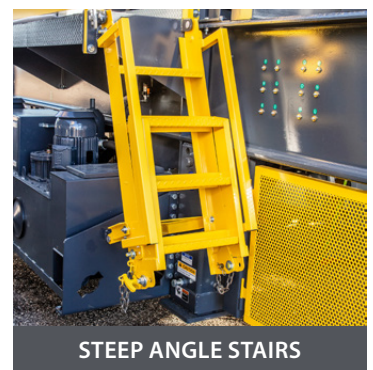
EXTERRA® PRIMARY SCRAPER



SELF-CLOSING GATE



SLIDING LADDER



STEEP ANGLE STAIRS

Need something custom? We're glad to help!

[superior-ind.com](http://superior-ind.com)

# CONE CRUSHER PLANTS - OPEN CIRCUIT



## REAR DISCHARGE PLANTS (RD)

SPECIFICATIONS				
Model #	Main Equipment	Capacity STPH (MTPH)	Suspension	Weight lb (kg)
P200RD	P200 Patriot® Cone Crusher	75-340 (70-310)	2 Axle	63,500 (28,800)
P300RD	P300 Patriot® Cone Crusher	135-540 (120-490)	3 Axle	82,500 (37,420)
P400RD	P400 Patriot® Cone Crusher	140-640 (125-580)	3 Axle	103,200 (46,810)
P500RD	P500 Patriot® Cone Crusher	180-800 (165-725)	4 Axle	137,000 (62,140)
D350RD	D350 Dakota® Cone Crusher	170-460 (155-415)	3 Axle	91,500 (41,500)
ST300RD	ST300 Endeavor® Cone Crusher	100-440 (90-400)	3 Axle	86,250 (39,125)
SS300RD	SS300 Endeavor® Cone Crusher	160-550 (145-499)	3 Axle	95,500 (43,320)
ST400RD	ST400 Endeavor® Cone Crusher	179 - 730 (162 - 662)	Call Factory	Call Factory
SS400RD	SS400 Endeavor® Cone Crusher	293 - 1,157 (266 - 1,050)	Call Factory	Call Factory

# CONE CRUSHER PLANTS - OPEN CIRCUIT



## REAR FEED, REAR DISCHARGE PLANTS (RFRD)

### SPECIFICATIONS

Model #	Main Equipment	Capacity STPH (MTPH)	Suspension	Weight lb (kg)
<b>P200RFRD</b>	P200 Patriot® Cone Crusher	75-340 (70-310)	3 Axle	75,500 (34,250)
<b>P300RFRD</b>	P300 Patriot® Cone Crusher	135-540 (120-490)	3 Axle	96,000 (43,540)
<b>P400RFRD</b>	P400 Patriot® Cone Crusher	140-640 (125-580)	4 Axle	126,050 (57,175)
<b>D350RFRD</b>	D350 Dakota® Cone Crusher	170-460 (155-415)	4 Axle	120,000 (54,430)
<b>ST300RFRD</b>	SS300 Endeavor® Cone Crusher	100-440 (90-400)	3 Axle	95,600 (43,360)
<b>SS300RFRD</b>	ST300 Endeavor® Cone Crusher	160-550 (145-499)	4 Axle	118,000 (53,520)

Need something custom? We're glad to help!

[superior-ind.com](http://superior-ind.com)

# CONE CRUSHER PLANTS - OPEN CIRCUIT



## REAR FEED, SIDE DISCHARGE PLANTS (RFSD)

### SPECIFICATIONS

Model #	Main Equipment	Capacity STPH (MTPH)	Suspension
P200RFSD	P200 Patriot® Cone Crusher	75-340 (70-310)	3 Axle
P300RFSD	P300 Patriot® Cone Crusher	135-540 (120-490)	3 Axle
P400RFSD	P400 Patriot® Cone Crusher	140-640 (125-580)	4 Axle
D350RFSD	D350 Dakota® Cone Crusher	170-460 (155-415)	Call Factory
ST300RFSD	SS300 Endeavor® Cone Crusher	100-440 (90-400)	Call Factory
SS300RFSD	ST300 Endeavor® Cone Crusher	160-550 (145-499)	Call Factory

# CONE CRUSHER PLANTS - OPEN CIRCUIT



## REAR FEED, FRONT DISCHARGE (RFFD)

### SPECIFICATIONS

Model #	Main Equipment	Capacity STPH (MTPH)	Suspension
P200RFFD	P200 Patriot® Cone Crusher	75-340 (70-310)	3 Axle
P300RFFD	P300 Patriot® Cone Crusher	135-540 (120-490)	3 Axle
P400RFFD	P400 Patriot® Cone Crusher	140-640 (125-580)	4 Axle
D350RFFD	D350 Dakota® Cone Crusher	170-460 (155-415)	4 Axle
ST300RFFD	SS300 Endeavor® Cone Crusher	100-440 (90-400)	3 Axle
SS300RFFD	ST300 Endeavor® Cone Crusher	160-550 (145-499)	4 Axle

# CONE CRUSHER PLANT OPEN CIRCUIT- OPTIONS

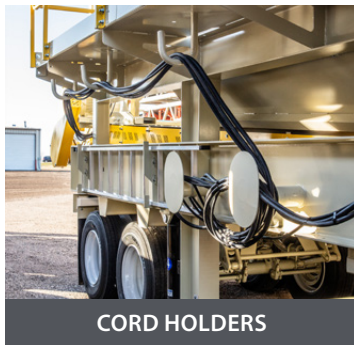
## RD PLANT OPTIONS LISTED BELOW\*

- » Hydraulic Leveling Legs
- » Hydraulic Leveling Legs 12V
- » Hydraulic Run-On Legs
- » Overflow Chute
- » Extended Lower Walkway
- » Wrap Around Platform
- » Upper Observation Platform
- » Self Closing Hinged Gate
- » Sliding Ladder
- » Steep Angle Stairs
- » Grease Stations
- » Tool Box
- » Cord Holders
- » Air Ride Suspension
- » Walking Beam Suspension
- » Tow Eye
- » Control Panel
- » Primary Scraper
- » Vulcanized Conveyor Splice
- » Class II Drive
- » Rubber Disc Impacts
- » Impact Bed
- » Seal System
- » Dual Motors
- » CSS Display
- » Vantage® Automation
- » Display Tether
- » Backup Pump
- » Cavity Level Sensor
- » Cold Weather Kit

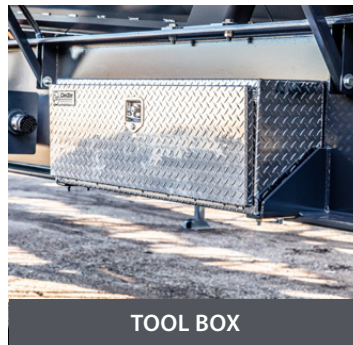
*\* Options subject to change since date of publication*



GREASE STATIONS



CORD HOLDERS



TOOL BOX



TOW EYE



HYDRAULIC RUN-ON LEGS



HYDRAULIC LEVELING LEGS



CONTROL PANEL



EXTERRA® PRIMARY SCRAPER



UPPER PLATFORM



CONE ACCESS PLATFORM



SLIDING LADDER



STEEP ANGLE STAIRS - CONE

# CONE CRUSHER PLANTS - CLOSED CIRCUIT (CC)



## PATRIOT® CONE AND DAKOTA® CONE PLANTS

### SPECIFICATIONS

Model #	Main Equipment	Capacity STPH (MTPH)	Suspension	Weight lb (kg)
P200CC	P200 Patriot® Cone Crusher 6x20 3-deck Guardian® Horizontal Screen	75-340 (70-310)	4 Axle	123,650 (56,085)
P300CC	P300 Patriot® Cone Crusher 6x20 3-deck Guardian® Horizontal Screen	135-540 (120-490)	4 Axle	139,500 (63,275)
D350CC	D350 Dakota® Cone Crusher 6x20 3-deck Guardian® Horizontal Screen	170-460 (155-415)	Call Factory	Call Factory
D350CC	D350 Dakota® Cone Crusher 7x20 3-deck Guardian® Horizontal Screen	170-460 (155-415)	Call Factory	Call Factory

# CONE CRUSHER PLANT CLOSED CIRCUIT- OPTIONS

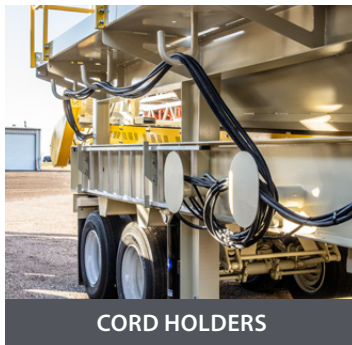
## PLANT OPTIONS LISTED BELOW\*

- » Split Quad Axle
- » Tridem Axle with Booster
- » Hydraulic Leveling Legs
- » Hydraulic Run-On Legs
- » Overflow Chute
- » Cone Access Platform
- » Rubber Flashing
- » Self Closing Hinged Gate
- » Sliding Ladder
- » Steep Angle Stairs
- » Grease Stations
- » Tool Box
- » Cord Holders
- » Air Ride Suspension
- » Tow Eye
- » Level Assist (patented)
- » Control Panel
- » Feed Conveyor Fold
- » Feed Conveyor Hydraulics\*
- » Middle Deck Cross Conveyor
- » Closed Circuit Cross Conv.
- » Primary Scraper\*
- » Vulcanized Conveyor Splice\*
- » Class II Drive\*
- » Rubber Disc Impacts
- » Seal System
- » CSS Display
- » Vantage® Automation
- » Display Tether
- » Backup Pump
- » Cavity Level Sensor
- » Cold Weather Kit

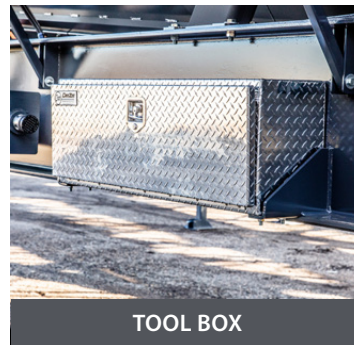
\* Options subject to change since date of publication



GREASE STATIONS



CORD HOLDERS



TOOL BOX



TOW EYE



HYDRAULIC RUN-ON LEGS



HYDRAULIC LEVELING LEGS



CONTROL PANEL



EXTERRA® PRIMARY SCRAPER



SELF-CLOSING GATE



CONE ACCESS PLATFORM



SLIDING LADDER



STEEP ANGLE STAIRS - CONE

# VSI PORTABLE PLANTS



## REAR DISCHARGE PLANTS (RD)

SPECIFICATIONS		
Model #	Main Equipment	Capacity STPH (MTPH)
V2160SRD	V2160S Valor® VSI	400 (300)
V2160DRD	V2160D Valor® VSI	400 (300)
T35RD	T35 Cemco® VSI	50 (45)
T54RD	T54 Cemco® VSI	125 (115)
T70RD	T70 Cemco® VSI	150 (136)
T80RD	T80 Cemco® VSI	275 (250)
T96RD	T96 Cemco® VSI	450 (408)

# VSI PORTABLE PLANTS



## REAR FEED, REAR DISCHARGE PLANTS (RFRD)

SPECIFICATIONS		
Model #	Main Equipment	Capacity STPH (MTPH)
V2160SRFRD	V2160S Valor® VSI	400 (300)
V2160DRFRD	V2160D Valor® VSI	400 (300)
T35RFRD	T35 Cemco® VSI	50 (45)
T54RFRD	T54 Cemco® VSI	125 (115)
T70RFRD	T70 Cemco® VSI	150 (136)
T80RFRD	T80 Cemco® VSI	275 (250)
T96RFRD	T96 Cemco® VSI	450 (408)

# VSI PORTABLE PLANTS



## REAR FEED, SIDE DISCHARGE PLANTS (RFSD)

SPECIFICATIONS		
Model #	Main Equipment	Capacity STPH (MTPH)
V2160SRFSD	V2160S Valor® VSI	400 (300)
V2160DRFSD	V2160D Valor® VSI	400 (300)
T35RFSD	T35 Cemco® VSI	50 (45)
T54RFSD	T54 Cemco® VSI	125 (115)
T70RFSD	T70 Cemco® VSI	150 (136)
T80RFSD	T80 Cemco® VSI	275 (250)
T96RFSD	T96 Cemco® VSI	450 (408)

# VSI PLANT - OPTIONS

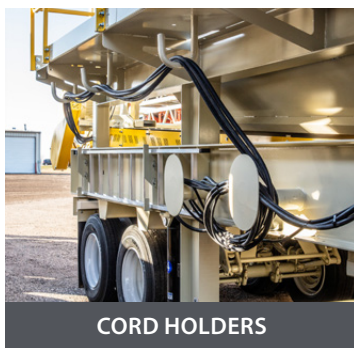
## PLANT OPTIONS LISTED BELOW\*

- » Hydraulic Leveling Legs
- » Hydraulic Run-On Legs
- » Extended Lower Walkway
- » Upper Observation Platform
- » Wrap Around Platform
- » Self Closing Hinged Gate
- » Sliding Ladder
- » Steep Angle Stairs
- » Grease Stations
- » Tool Box
- » Cord Holders
- » Air Ride Suspension
- » Walking Beam Suspension
- » Tow Eye
- » Level Assist (patented)
- » Conveyor Covers
- » Primary Scraper
- » Vulcanized Conveyor Splice
- » Class II Drive
- » Rubber Disc Impacts
- » Impact Bed
- » Water Spray Kit
- » Manual Jib Crane
- » Electric Jib Crane
- » Vantage® Automation
- » Rotor Options
- » Anvil Ring Options
- » Single or Dual Drive
- » Power Drive Size Options

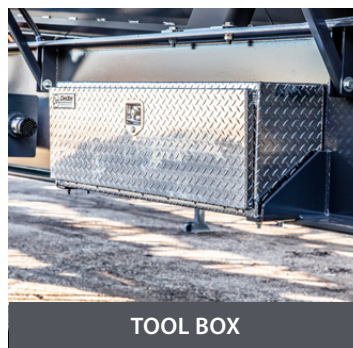
*\* Options subject to change since date of publication*



GREASE STATIONS



CORD HOLDERS



TOOL BOX



TOW EYE



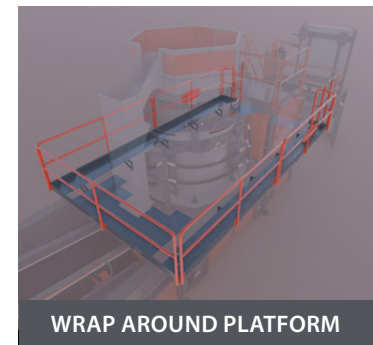
HYDRAULIC RUN-ON LEGS



HYDRAULIC LEVELING LEGS



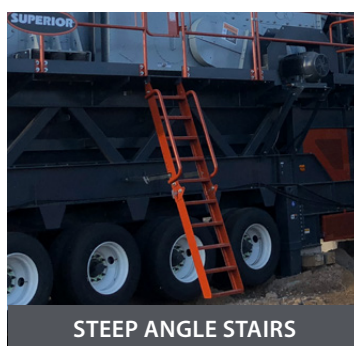
LEVEL ASSIST



WRAP AROUND PLATFORM



UPPER PLATFORM



STEEP ANGLE STAIRS



SLIDING LADDER



EXTERRA® PRIMARY SCRAPER

# HSI PORTABLE PLANTS



PORTABLE SENTRY® HSI FRONT DISCHARGE PLANT

## SENTRY® HSI FRONT DISCHARGE (FD)

## SENTRY® HSI REAR DISCHARGE (RD)

SPECIFICATIONS			SPECIFICATIONS		
Model #	Main Equipment	Capacity STPH (MTPH)	Model #	Main Equipment	Capacity STPH (MTPH)
SP5155FD	Sentry® HSI Intrepid® VGF	385 (350)	SP5155RD	Sentry® HSI Intrepid® VGF	385 (350)
SP5565FD	Sentry® HSI Intrepid® VGF	550 (500)	SP5565RD	Sentry® HSI Intrepid® VGF	550 (500)
SP6384FD	Sentry® HSI Intrepid® VGF	990 (900)	SP6384RD	Sentry® HSI Intrepid® VGF	990 (900)
SS3936FD	Sentry® HSI Intrepid® VGF	165 (150)	SS3936RD	Sentry® HSI Intrepid® VGF	165 (150)
SS4355FD	Sentry® HSI Intrepid® VGF	275 (250)	SS4355RD	Sentry® HSI Intrepid® VGF	275 (250)
SS5165FD	Sentry® HSI Intrepid® VGF	440 (400)	SS5165RD	Sentry® HSI Intrepid® VGF	440 (400)
SS5583FD	Sentry® HSI Intrepid® VGF	550 (500)	SS5583RD	Sentry® HSI Intrepid® VGF	550 (500)
SS4355GFD	Sentry® HSI Intrepid® VGF	275 (250)	SS4355GRD	Sentry® HSI Intrepid® VGF	275 (250)
SS5165GFD	Sentry® HSI Intrepid® VGF	484 (440)	SS5165GRD	Sentry® HSI Intrepid® VGF	484 (440)
SS5583GFD	Sentry® HSI Intrepid® VGF	550 (500)	SS5583GRD	Sentry® HSI Intrepid® VGF	550 (500)
SR3936FD	Sentry® HSI Intrepid® VGF	165 (150)	SR3936RD	Sentry® HSI Intrepid® VGF	165 (150)
SR4250FD	Sentry® HSI Intrepid® VGF	220 (200)	SR4250RD	Sentry® HSI Intrepid® VGF	220 (200)
SR5165FD	Sentry® HSI Intrepid® VGF	440 (400)	SR5165RD	Sentry® HSI Intrepid® VGF	440 (400)

# HSI PLANTS - CLOSED CIRCUIT (CC)



## SENTRY® HSI PORTABLE PLANTS (CC)

### SPECIFICATIONS

Model #	Main Equipment	Capacity STPH (MTPH)	Suspension	Weight lb (kg)
<b>4250 HSI CC</b>	4250 Sentry® HSI 6162 Anthem® Incline Screen 48X18 Intrepid® VGF 48x78 Pan Feeder	220 (200)	3 + 1 Axle	141,500 (64,180)
<b>4250 HSI CC PRE-SCREEN MODEL</b>	4250 Sentry® HSI 6162 Anthem® Incline Screen 48X12 Intrepid® VGF 4'x6' 2 Deck Scalp Screen 48x78 Pan Feeder	220 (200)	3 + 1 Axle	141,500 (64,180)

# SCREEN PLANTS - SINGLE SCREEN



## GUARDIAN® HORIZONTAL SCREEN PLANTS

### SPECIFICATIONS

Model #	Main Equipment	Suspension	Weight lb (kg)
5x16 3D	5163 Guardian® Horizontal Screen Plant	2 Axle	Call Factory
6x20 3D	6203 Guardian® Horizontal Screen Plant	2 Axle	64,460 (29,240)
7x20 3D	7203 Guardian® Horizontal Screen Plant	2 Axle	71,060 (32,230)
8x20 3D	8203 Guardian® Horizontal Screen Plant	2 Axle	77,190 (35,010)

# SCREEN PLANTS - TANDEM



## GUARDIAN® HORIZONTAL SCREEN PLANTS

### SPECIFICATIONS

Model #	Main Equipment	Suspension	Weight lb (kg)
6x20 3D Tandem	(2) 6203 Guardian® Horizontal Screen Plant	4-Axle	130,000 (58,970)
7x20 3D Tandem	(2) 7203 Guardian® Horizontal Screen Plant	4-Axle	140,850 (63,890)

# SCREEN PLANTS - OVERHEAD FEED CONVEYOR



## GUARDIAN® HORIZONTAL SCREEN PLANTS (OFC)

### SPECIFICATIONS

Model #	Main Equipment	Suspension	Weight lb (kg)
6x20 2D OFC	6203 Guardian® Horizontal Screen Plant	2 Axle	67,300 (30,525)
6x20 3D OFC	6203 Guardian® Horizontal Screen Plant	2 Axle	72,000 (32,660)
7x20 3D OFC	7203 Guardian® Horizontal Screen Plant	3 Axle	96,600 (43,820)
8x20 3D OFC	8203 Guardian® Horizontal Screen Plant	3 Axle	94,400 (42,820)

# ANTHEM<sup>®</sup> SCREEN PLANTS



## ANTHEM<sup>®</sup> INCLINED SCREEN PLANTS

### SPECIFICATIONS

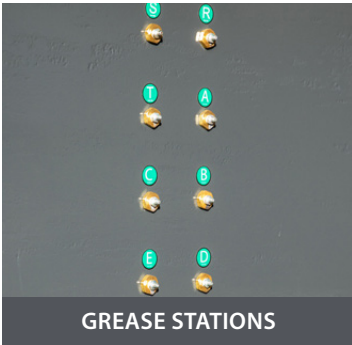
Model #	Main Equipment	Suspension	Weight lb (kg)
5x16 3D-SI	5163 Anthem <sup>®</sup> Inclined Screen	2 Axle	Call Factory
6x16 3D-SI	6163 Anthem <sup>®</sup> Inclined Screen	2 Axle	Call Factory
6x20 3D-SI	6203 Anthem <sup>®</sup> Inclined Screen	2 Axle	Call Factory
7x20 3D-SI	7203 Anthem <sup>®</sup> Inclined Screen	3 Axle	Call Factory
8x20 3D-SI	8203 Anthem <sup>®</sup> Inclined Screen	3 Axle	90,100 (40,870)

# SCREEN PLANT - OPTIONS

## PLANT OPTIONS LISTED BELOW\*

- » Hydraulic Leveling Legs
- » Hydraulic Leveling Legs 12V
- » Hydraulic Run-On Legs
- » Hydraulic Roll Away Discharge Chute
- » Blending Up Gates
- » Blending Down Gates
- » Tie Off
- » Sliding Ladder
- » Steep Angle Stairs
- » Extended Front Walkway
- » Self Closing Hinged Gate
- » Grease Stations
- » Tool Box
- » Cord Holders
- » Fines Hopper Liner
- » Air Suspension
- » Tow Eye
- » Manual Centering Hopper
- » Hydraulic Centering Hopper
- » Cribbing Storage
- » Panel Sun Shade
- » Control Panel
- » Cross Conveyors
- » Reject Conveyor
- » Primary Scraper\*
- » Class II Drive\*
- » Seal System\*
- » Rubber Springs
- » Rubber Shaft Housing
- » Medium Scalper Package
- » Urethane Flat Deck
- » Wire Cloth Installation
- » Cross Member Protectors
- » End Tensioned Deck (Bottom Deck)

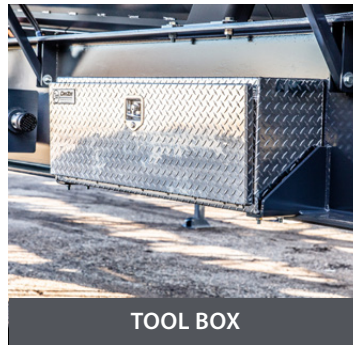
*\* Options subject to change since date of publication*



GREASE STATIONS



CORD HOLDERS



TOOL BOX



TOW EYE



HYDRAULIC RUN-ON LEGS



HYDRAULIC LEVELING LEGS



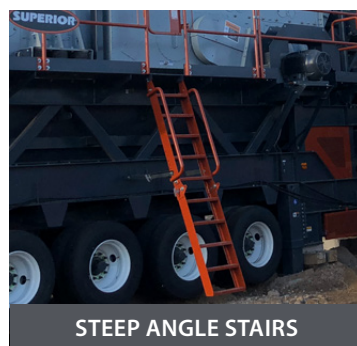
SELF-CLOSING GATE



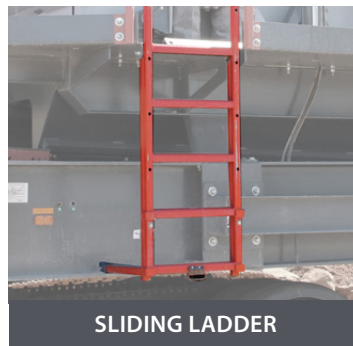
REJECT CONVEYOR



CROSS CONVEYORS



STEEP ANGLE STAIRS



SLIDING LADDER



EXTERRA® PRIMARY SCRAPER

Need something custom? We're glad to help!

[superior-ind.com](http://superior-ind.com)

# WASH SCREW PLANTS



## TWIN FMW / GUARDIAN® SCREEN PLANTS

### SPECIFICATIONS

Model #	Main Equipment	Capacity STPH (MTPH)	Suspension	Weight lb (kg)
6203 T36	3625 Twin FMW 6203 Guardian® Horizontal Screen	Call Factory	3 Axle	84,100 (38,150)
6203 TH32	4432 Twin FMW 6203 Guardian® Horizontal Screen	Call Factory	3 Axle	93,000 (42,185)

# AGGREDRY® WASH PLANTS



## AGGREDRY® WASHER PLANTS

### SPECIFICATIONS

Model #	Main Equipment	Suspension	Weight lb (kg)
6203 T36A	3625 Twin Aggredry® Washer 6203 Guardian® Screen Plant	3 Axle	97,800 (44,360)
6203 T44A	4432 Twin Aggredry® Washer 6203 Guardian® Screen Plant	4 Axle	114,600 (51,980)
7203 T44A	4432 Twin Aggredry® Washer 7203 Guardian® Screen Plant	3 + 1 Axle	135,500 (61,460)

Need something custom? We're glad to help!

[superior-ind.com](http://superior-ind.com)

# WASH PLANT - OPTIONS

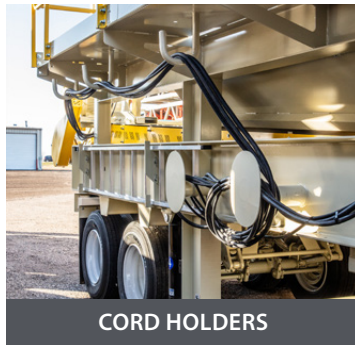
## PLANT OPTIONS LISTED BELOW\*

- » Hydraulic Leveling Legs
- » Hydraulic Leveling Legs 12V
- » Hydraulic Run-On Legs
- » Roll Away Discharge Chute
- » Chute Liner
- » Blending Gates
- » Rubber Flashing
- » Safety Tie Off
- » Sliding Ladder
- » Steep Angle Stairs
- » Extended Front Walkway
- » Self Closing Hinged Gate
- » Hydraulic Slurry hopper
- » Wye Strainer
- » Washer Plumbing Kit
- » Crossover Pipe
- » Grease Stations
- » Tool Box
- » Cord Holders
- » Air Suspension
- » Walking Beam Suspension
- » Tow Eye
- » DS Observation Platform
- » Urethane Wear Shoes
- » Control Panel
- » Cross Conveyors
- » Primary Scraper
- » Class II Drive
- » Vulcanized Splice
- » Idler Upgrade
- » Seal System
- » Rubber Springs
- » Rubber Shaft Housing
- » Medium Scalper Package
- » Medium Scalper Deck
- » Urethane Flat Deck
- » Urethane Media Installation
- » Wire Cloth Installation
- » Wedge Take Up Clamps
- » End Tensioned Deck (Bottom Deck)

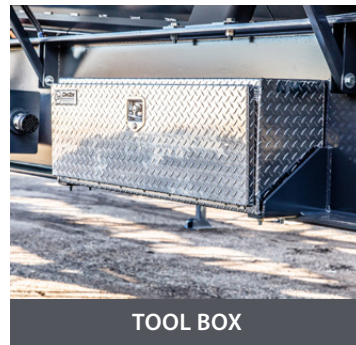
*\* Options subject to change since date of publication*



GREASE STATIONS



CORD HOLDERS



TOOL BOX



TOW EYE



HYDRAULIC RUN-ON LEGS



HYDRAULIC LEVELING LEGS



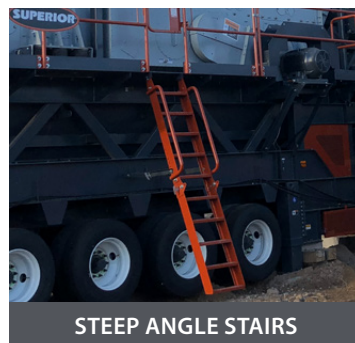
SELF-CLOSING GATE



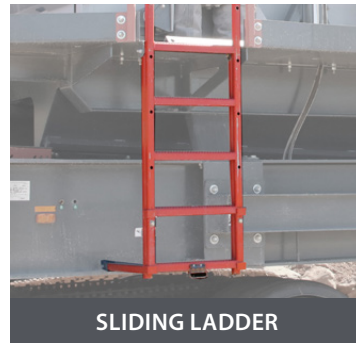
EXTENDED FRONT WALKWAY



CROSS CONVEYORS



STEEP ANGLE STAIRS



SLIDING LADDER



EXTERRA® PRIMARY SCRAPER

# SPIRIT® SAND PLANTS



## SPIRIT® SAND PLANT

### SPECIFICATIONS

Model #	Main Equipment	Suspension	Weight lb (kg)
<b>6203 Spirit Sand Plant with UFR (Patented)</b>	6203 Guardian® Screen 5x10 Dewatering Screen 3x8 Dewatering Screen (2) 12"x20 Helix® Cyclones (1) 24"x30 Helix® Cyclone	3 Axle	96,000 (43,540)

# PUG MILL



## PUG MILL PLANTS

SPECIFICATIONS			
Model #	Capacity STPH (MTPH)	Suspension	Weight lb (kg)
T36	350 - 750 (315-680)	1 Axle	Call Factory
T44	600 - 1,200 (545 - 1,090)	1 Axle	Call Factory

# PORTABLE FEED HOPPERS



## PORTABLE FEED HOPPER PLANTS

SPECIFICATIONS						
Model #	Main Equipment	Capacity STPH (MTPH)	Suspension	Weight lb (kg)	Hopper Capacity yd <sup>3</sup> struck (m <sup>3</sup> struck)	Hopper Capacity tons@100PCF (tonnes@100PCF)
PFH10	8'x16' Hopper 18' Belt Feed Conveyor 40' Discharge Conveyor	250-850 (225-770)	1 Axle	37,400 (16,960)	10 (7.6m <sup>3</sup> )	13.5 (12.25 tonnes)
PFH10	8'x16' Hopper 18' Belt Feed Conveyor 50' Discharge Conveyor	250-850 (225-770)	2 Axle	43,900 (19,910)	10 (7.6m <sup>3</sup> )	13.5 (12.25 tonnes)
PFH15	9'x18' Hopper 20' Belt Feed Conveyor 40' Discharge Conveyor	250-850 (225-770)	2 Axle	Call Factory	15 (11.4m <sup>3</sup> )	20.25 (18.37 tonnes)

# RIPRAP PLANTS



## PORTABLE RIPRAP PLANTS

### SPECIFICATIONS

Model #	Main Equipment	Capacity STPH (MTPH)	Suspension	Weight lb (kg)
4824	48x24 Intrepid® Grizzly Feeder 36" Cross Conveyor	Call Factory	3 Axle	66,250 (30,050)
6024	60x24 Intrepid® Grizzly Feeder 36" Cross Conveyor	Call Factory	3 Axle	90,000 (40,820)

# FULL PORTABLE PLANT SPREADS

Design a Complete Portable System From Rock Face to Load Out®



## BENEFITS

- » One source for all processing plants and portable conveyors
- » Designed and integrated to work seamlessly together
- » Easily peel off individual equipment to use at other job sites
- » Self-contained power options for remote conditions
- » All electrical and optional automation designed in-house by Superior

## GRANITE CONSTRUCTION - BIG ROCK PLANT



## SUMMARY

- » Produces eleven high-quality aggregate materials simultaneously
- » Flexibility to modify finished products as the market demands
- » Recycles 134,000 gallons of water per hour
- » Portable didn't require same government oversight as stationary

[Click the image](#) to watch the video and see the product working.

# PORTABLE PLANTS - CASE STUDY

Contract Crusher Tackles Nationwide Territory With Custom Processing



**FRED WEBER - COLORADO SITE**

## SUMMARY

- » Fred Weber, Inc., a nationwide contract crusher, combines the best human resources with custom processing solutions. Each plant in its portable fleet is customized and configured to fit the specific job.
- » The company's new Colorado setup features a custom-engineered portable plant with a P400 Patriot® Cone Crusher.
- » Superior Industries provided an all-in-one solution, designing and manufacturing the entire plant, including crushing, screening, and Vantage® Automation, with local support from Power Equipment Company.
- » The plant's design includes advanced automation, a hydraulic control house, and customizable screens, allowing quick product adjustments and efficient material handling.
- » The Vantage Automation system simplifies operations with touchscreen controls, enabling easy start-up, shut-down, and manual adjustments.

