

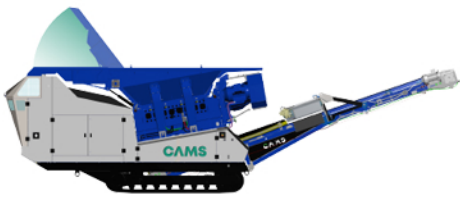
CAMS UTM 1500G

PATENTED

Designed to Shred Concrete, Asphalt, Wood, C&D, and MSW.

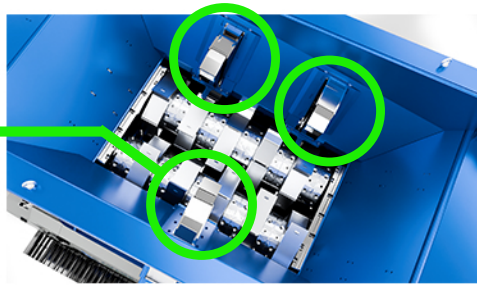


Unique Features:

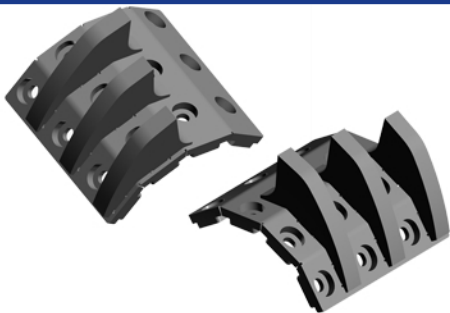


**Remote Control
Dump Feeder**

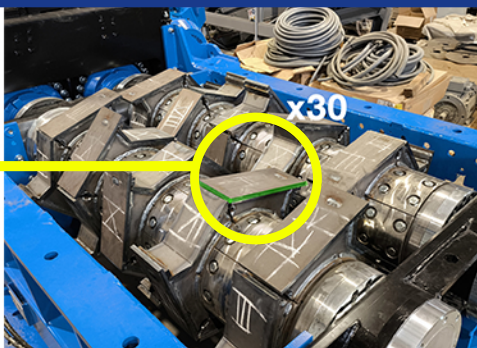
**"Patented"
Pinchers**



**"Bolt-on" Armored
Plating with Teeth**



**Weld on wear
plates.**



**A Big Step up from
the "Me Too"
Shredders on the
Market.**

**Dual Power :
Shore Power or
onboard CAT
C7.1 Generator.**

**Highest Torque
per Shaft in it's
class.**

**Legal Height,
Width, and
Length**

**No Screens to
clog.**

**Equipped with
Cross Magnet.**

**On Board Belt
Load Scale.**

**North American
Master Distributor**

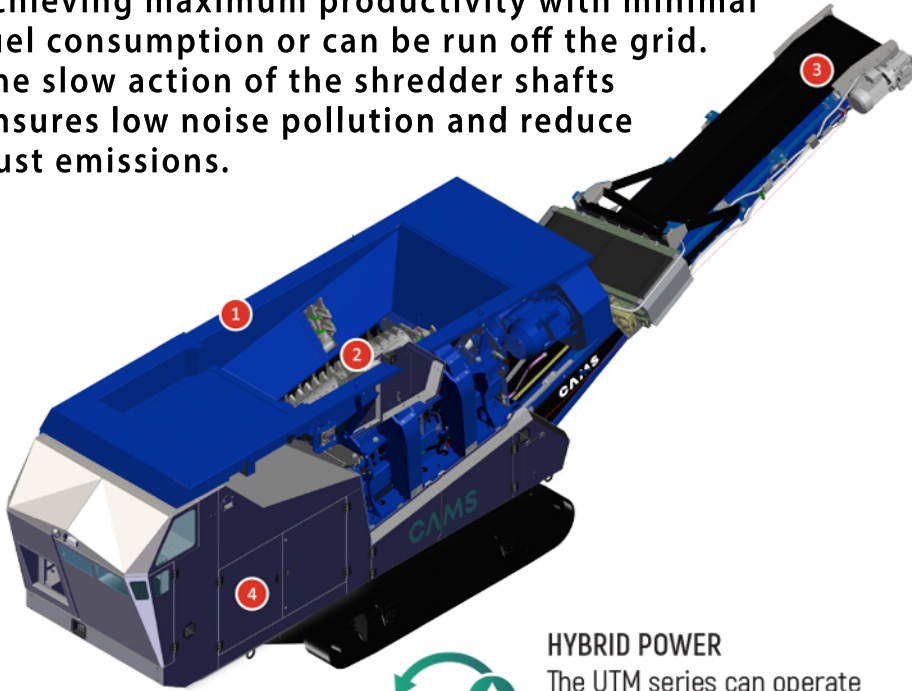


**770-433-2670
sales@grindercrusherscreen.com**

CAMS UTM 1500G

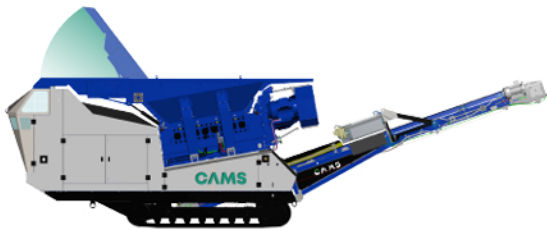
PATENTED

The CAMS UTM 1500G is a "Patented" Track Mounted Shredder designed to shred Concrete, Asphalt, Wood, C&D, and MSW. This highly robust machine is capable of achieving maximum productivity with minimal fuel consumption or can be run off the grid. The slow action of the shredder shafts ensures low noise pollution and reduce dust emissions.



HYBRID POWER

The UTM series can operate in fully electric mode, reducing emissions (without a Diesel engine).



36'-9"

5



7'-7"

10'-2"

FEATURES

- Automatic programs for crushing different materials
- Capable of processing wet materials
- Low fuel consumption
- Designed for compact transport
- High wear resistance
- Ability to provide electric power
- Low noise pollution and reduced emissions

OPTIONS

- GPS
- Diesel refueling pump
- Electric pump
- Dust suppression pump
- Automatic greasing pump

A Big Step up from the "Me Too" Shredders on the Market.

1 Hopper:

5 cu. yards
13'-11" x 5'-0"

2 Shredder:

60" x 36"

3 Discharge Conveyor:

32" wide x 10'-2" high

4 Generator Set:

CAT C7.1 270HP Stage V
200 kW Alternator:
MeccAlte 350 kVA

Fuel Tank: 53 gallons

Burns approx. 3gph

5 Dimensions:

Length 36'-9"
Height 7'-7"
Width 10'-2"
Weight 43,000 lbs

Available only at



770-433-2670

sales@grindercrusherscreen.com