

---

## **PORTAFILL 5000CT TECHNICAL SPECIFICATION**

### **SCREEN**

- BOLTED, 2 DECK, 2 BEARING 2400 [8'] X 1200 [4'] SCREENBOX,
- 8MM VIBRATION.
- SCREEN SPEED- 1235 RPM,
- SCREEN MOTOR -36 CC/REV ALUM. CASING ,TAPER SHAFT

### **CONVEYORS**

#### **Feeder Conveyor**

- 1000MM [40"] WIDE EP 500/3 PLY VULCANISED ENDLESS BELT, 8MM + 2MM COVER
- MOTOR- 80CC
- REGGIANA GEARBOX
- DRUM SPEED- 23.5 RPM (APPROX)
- BELT SPEED - 21.5 M/MIN (APPROX)
- VARIABLE SPEED

#### **Wing Conveyors**

- 750MM [30"] WIDE EP 400/ 3 PLY VULCANISED ENDLESS BELT, 3MM + 1.5MM COVER C15 CHEVRON
- HYDRAULICALLY FOLDING WITH RETRACTABLE HEAD DRUM FOR TRANSPORT
- DISCHARGE HEIGHT 2380MM [7'09"]
- MOTOR –315CC
- DRUM SPEED- 145 RPM (APPROX)
- BELT SPEED- 96 M/MIN (APPROX)

#### **Oversize Conveyor**

- 1000MM [40"] WIDE EP 500/3 PLY VULCANISED ENDLESS BELT, 8MM+2MM COVER C25 CHEVRON
- HYDRAULICALLY FOLDING FOR TRANSPORT
- DISCHARGE HEIGHT 2540MM [8'04"]
- MOTOR – 400CC
- DRUM SPEED- 105 RPM (APPROX)
- BELT SPEED- 73.5 M/MIN (APPROX)

### **POWER**

- DEUTZ D20011L04 (TIER III COMPLIANT) DIESEL 39.9 (53HP)  
@ 2350RPM DRIVING TANDEM HYDRAULIC PUMP.
- 26.4 gal Capacity (APPROX) Diesel Tank
- 100.4 gal Capacity (APPROX) Hydraulic Tank

### **TRANSPORT DIMENSIONS**

- Transport Height: 8'-5"
- Transport Width: 7'-6"
- Transport Length: 30'-7"

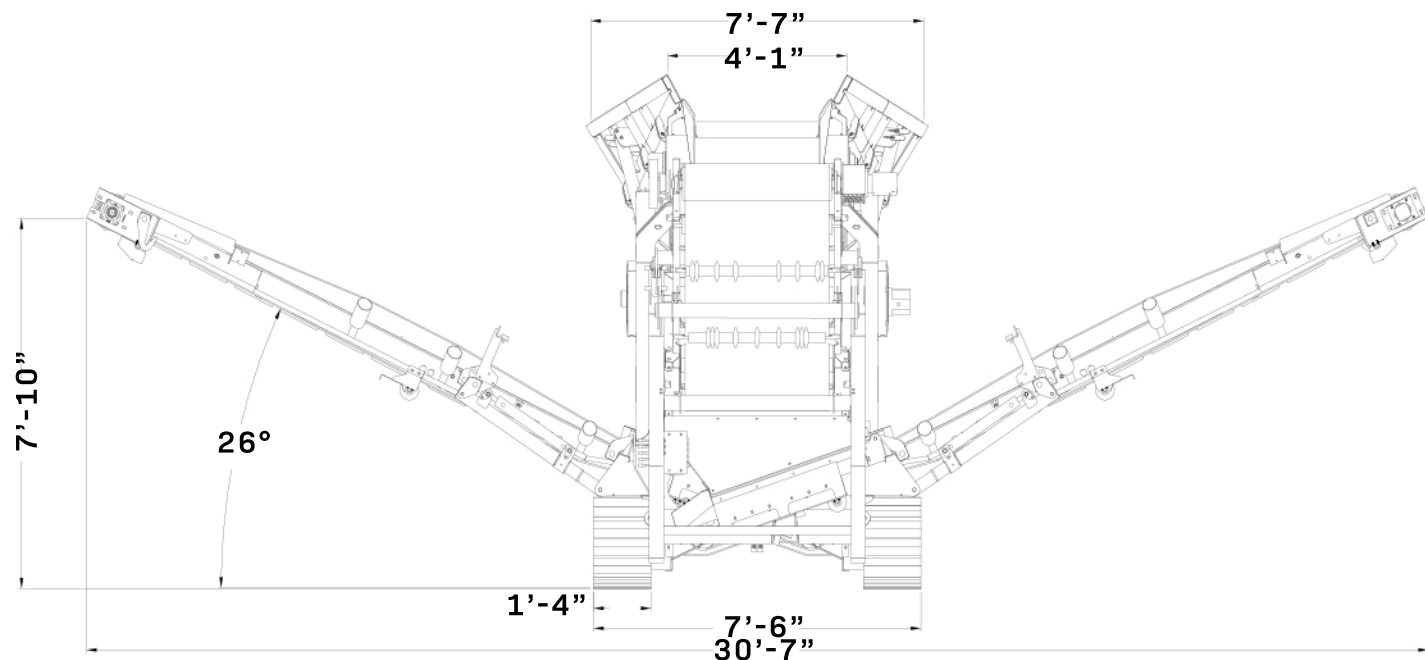
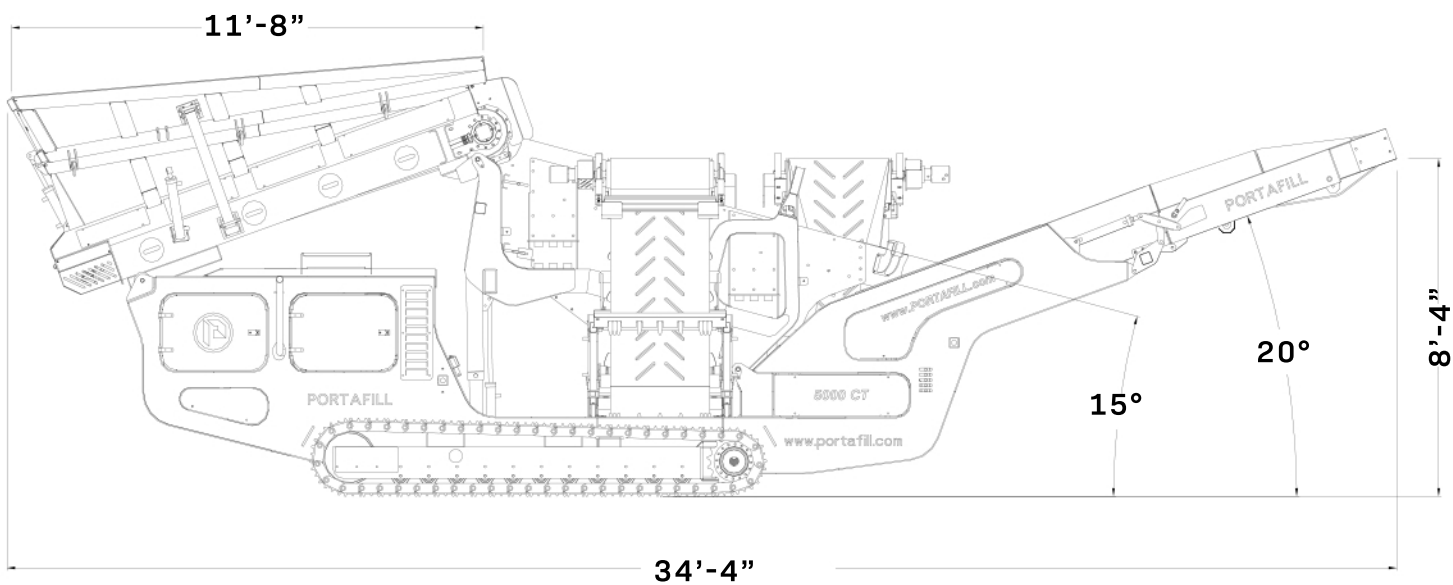
### **SCREENING CAPABILITY**

- 300-400 TONNE/ HOUR APPROX\*
- HOPPER VOLUME 5.23 cu. yd (APPROX)

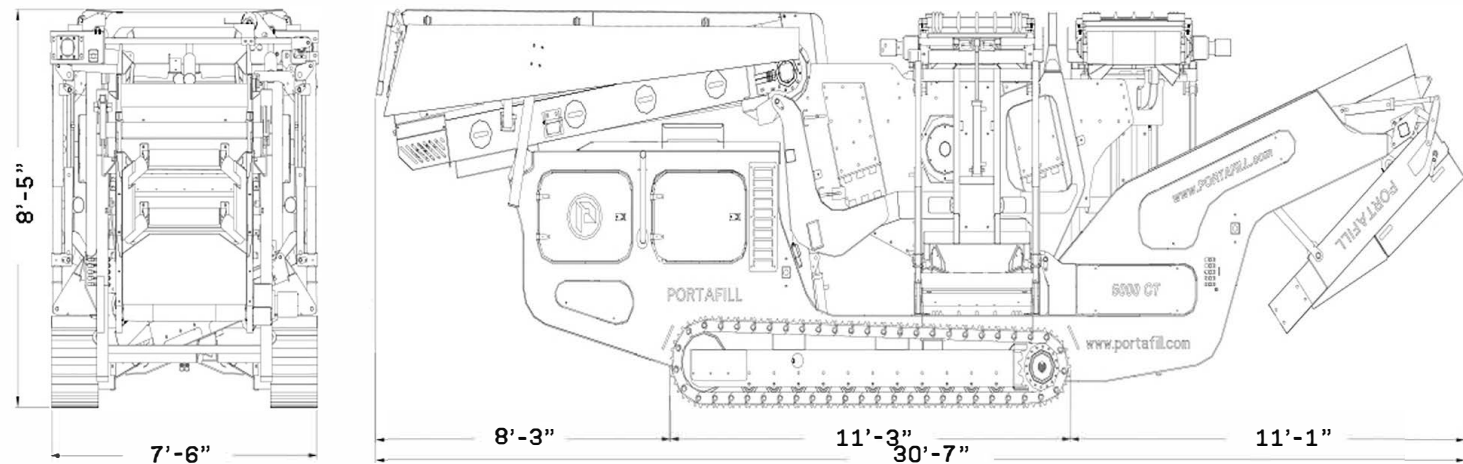
NB: All speeds and flow rates are calculated values assuming optimum working conditions and 95% efficiency of hydraulic pumps and motors , to be used as guide only. Actual reading may vary.

\*Screening material taken as sand & gravel @ 1650kg/ M<sup>3</sup>. Other materials will vary. Screening capacity may also depend on material conditions (moisture content) & screen size (aperture).

## Working Dimensions



## **Transport Dimensions**



### **WEIGHT**

25,353 lbs (APPROX)