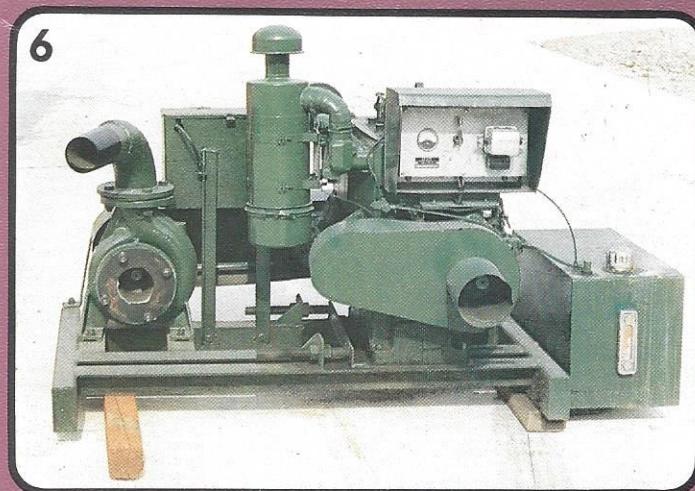
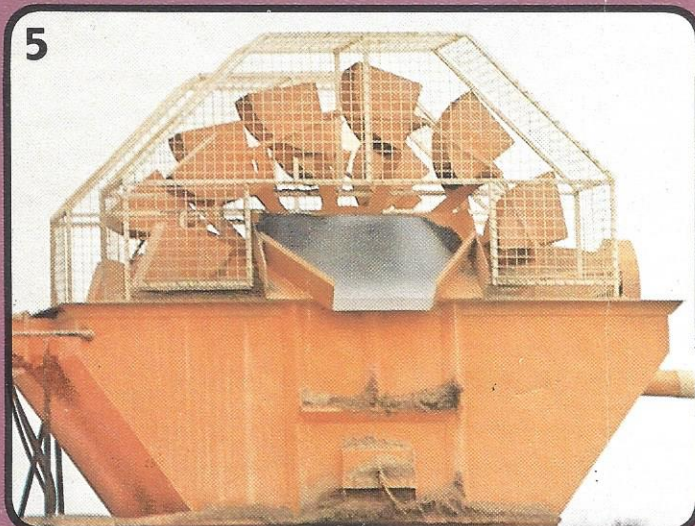
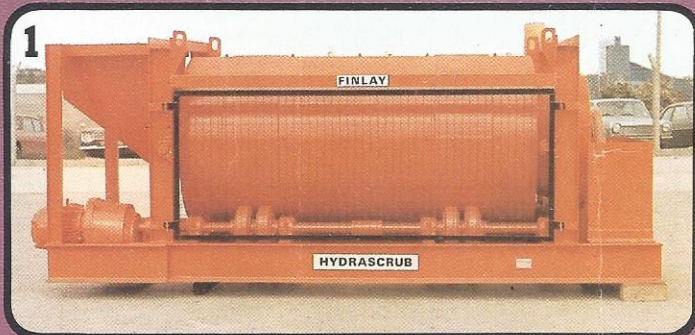


*2 bearing*

# FINLAY HYDRAWASH

## Sand and gravel screening and washing plant



- 1 Scrubber barrel.
- 2 424 Stockpiling conveyor 40ft. x 24ins. with swivel wheels.
- 3 Skid mounted 16ft. x 4ft. double deck vibrating screen with washing gear and transfer conveyor.
- 4 Four wheel sand de-waterer.
- 5 Two wheel sand de-waterer.
- 6 Diesel driven centrifugal water pump.

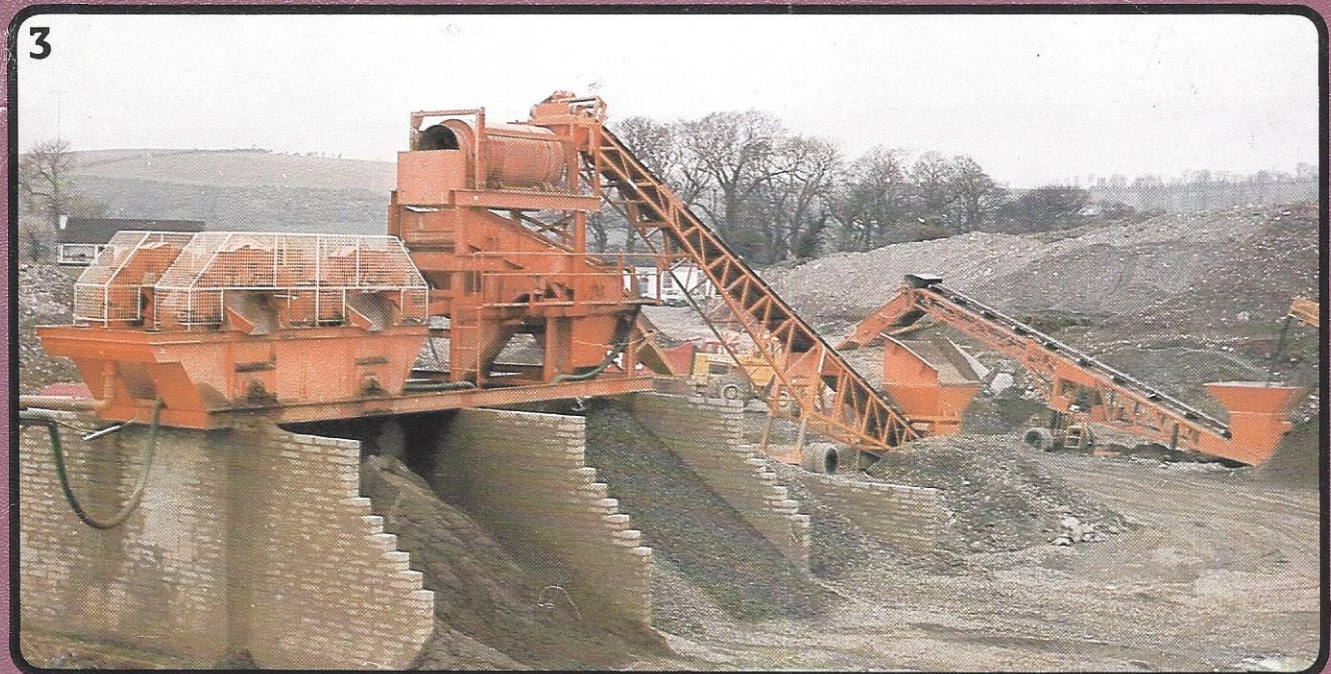
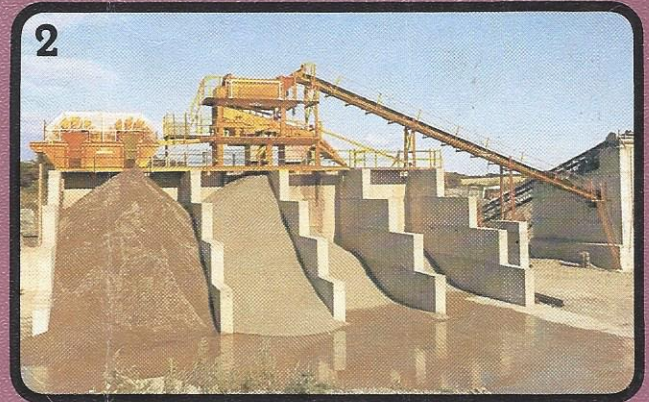
FINLAY (ENGINEERING) LTD.  
TULLYVANNON, BALLYGAWLEY,  
Co. TYRONE, N. IRELAND  
TEL: BALLYGAWLEY 441 OR 666 (STD 066 253)  
TELEX: 747443 — FINLAY G

BRANCH OFFICES AT:  
Dublin 593457: Dumfries 2245: Derby 372328



# FINLAY HYDRAWASH

Sand and gravel screening and washing plant



1 Hydrowash with scrubber barrel and two wheel de-waterer

2 Hydrowash plant in elevated position on cast concrete storage bays

3 Hydrowash with scrubber barrel and four wheel de-waterer  
Pre-screening by 50/30E Hydrascreen

4 Hydrowash with greater capacity (free standing type) feed hopper

'Modular' system for 'tailor made' installations  
from a range of standard equipment - available as a  
semi - mobile or fully mobile installation.