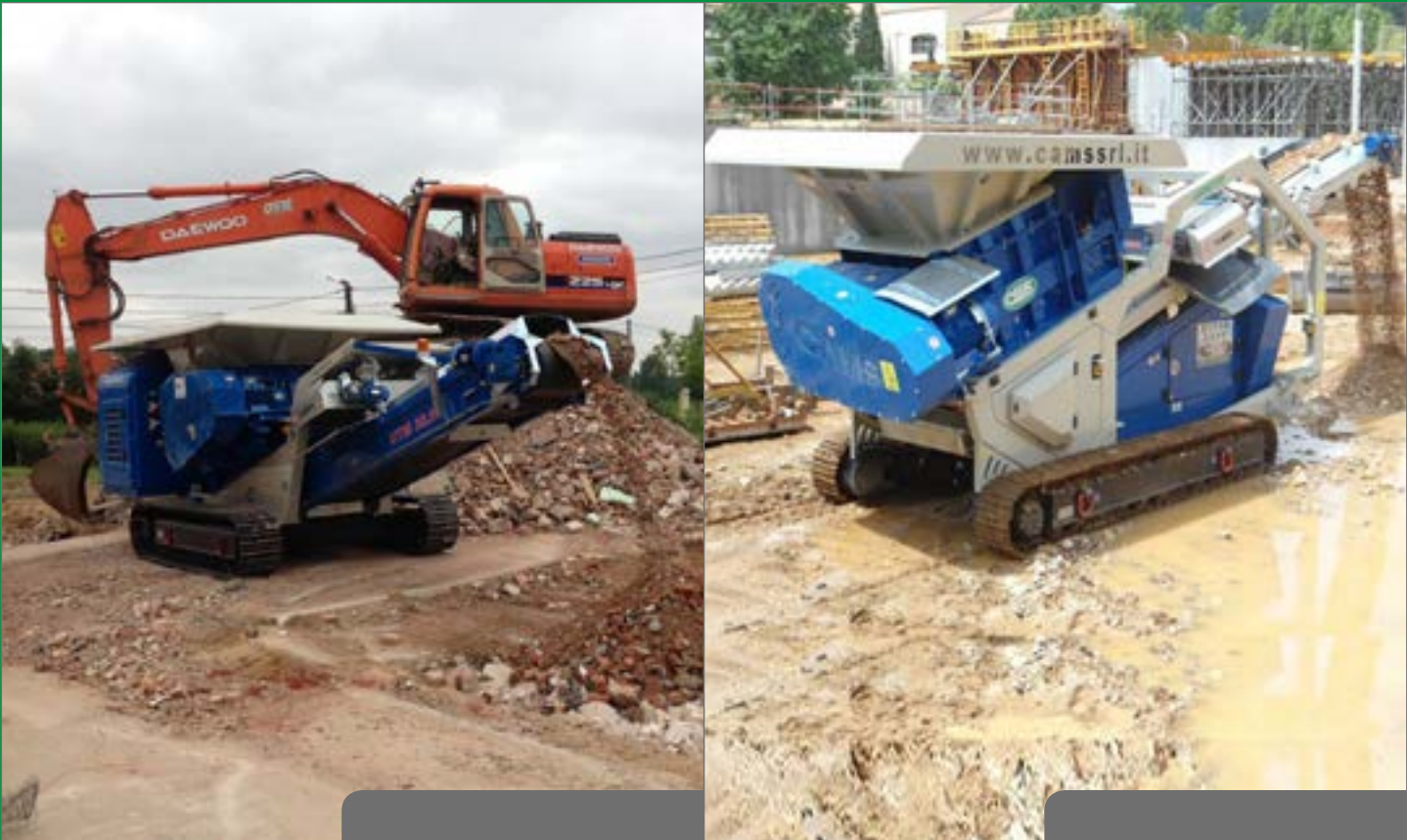


STATIONARY VERSION – UTS SERIES



UTS 1500-2

MOBILE VERSION – UTM SERIES



UTM 1500-2



EXPERT IN  
RECYCLING

Mobile and stationary crushing & recycling  
plants UTM series - UTS series

SOIL | DEMOLITION WASTE | CLAY | CONCRETE | RAILWAY SLEEPERS  
| ASPHALT | SCRAPS CERAMICS | LIMESTONE | COAL | GLASS





EXPERT IN RECYCLING



FEATURES AND BENEFITS

- Hight capacities of more than 180 t/h
- Low air pollution
- Low noise pollution
- No vibrations
- Possibility to work with damp or wet material
- Different machine sizes (4) according to requirements and requested capacity:  
UTM/UTS 1500-2 (ex 60.15) “Bomber”
- Low power for m³
- Different crushing program for the crushing of different material
- 15-channel remote control
- Whithout the operator
- Low wear and maintenance
- Crushing Picks interchangeable ([Patented Solution](#))
- Regulation of size of materials ([Patented Solution](#))



EXPERT IN RECYCLING



STANDARD VERSION WITH

- Dust abatement
- Over belt coverage
- Electric socket 220/380 V
- Wireles remote control
- Steel magnetic selection
- Crushing picks interchangeable
- Regulation of size of material

OPTIONS

- GPS
- Electronic weighing system
- Centralized greasing system
- Pump for dust reduction
- Pump for filling fuel tank
- Paint customized 2 colours
- Extension Hopper H=500 L=700
- Additional mater conveyor belt\*
- Idraulic grid for Hopper\*\*

\* only for stationary version  
\*\* only for 1500-2



EXPERT IN RECYCLING



TECHNICAL DATA

TYPE	SERIES MODEL	“CUCCIOLO”750 UTS 750-2	“LUPETTO”1000 UTS 1000-2	“BOSS”1200 UTS 1200-2	“BOMBER”1500 UTS 1500-2
Dimension of crusher (mm)		750x900	1000x900	1200x900	1500x900
Hopper surface (m)		2.30x1.70	3.00x2.0	3.20x2.0	3.50x2
Hopper capacity (m³)		1.80	3.00	3.50	3.80
Width(mm)/Length(m) conveyor		600/6	800/8	800/8	800/8
Max hourly production (t/h)		80	120	150	180
Electric engine Power (KW)		22 (11+11)	30 (15+15)	37 (18.5+18.5)	44 (22+22)
Width (m)		2.45	2.50	2.50	2.50
Lenght (m) in trasport		6.65	8.70	8.90	9.30
Height (m) in trasport		2.50	3.00	3.00	3.00
Total Weight (kg)		7.800	13.000	14.000	16.500

TYPE	SERIES MODEL	“CUCCIOLO”750 UTM 750-2	“LUPETTO”1000 UTM 1000-2	“BOSS”1200 UTM 1200-2	“BOMBER”1500 UTM 1500-2
Dimension of crusher (mm)		750x900	1000x900	1200x900	1500x900
Hopper surface (m)		2.30x1.70	3.00x2.0	3.20x2.0	3.50x2.0
Hopper capacity (m³)		1.80	2.85	3.50	3.80
Width(mm)/Length(m) conveyor		600/6	800/8	800/8	800/8
Max hourly production (t/h)		80	120	150	180
Generating set (kW)		78	121	121	193
Width (m)		2.50	2.55	2.55	2.55
Lenght (m) in trasport		7.00	6.35	6.60	10.50
Height (m) in trasport		2.50	3.00	3.00	3.00
Total Weight (kg)		11.500	18.100	20.000	22.500