

**PALLETS**



**DURATECH**

**HD 10-P TORNADO**

(PINTLE HITCH) Industrial Tub Grinder

**BARK**



**r o c k**

**CONSTRUCTION DEBRIS**

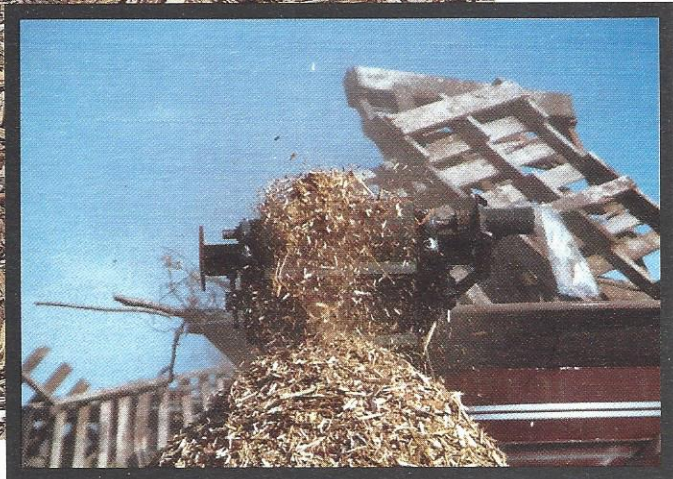
**t r e e s**

**c a r d b o a r d**

**WASTE WOOD**

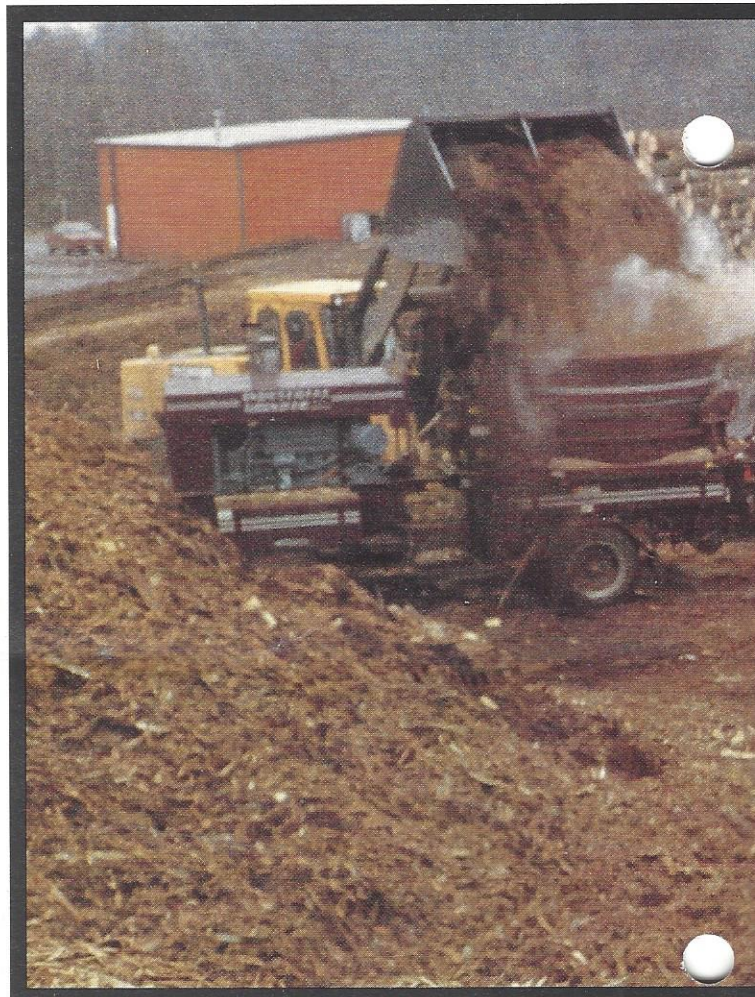
**s h e e t**





**DuraTech International's state-of-the-art tub grinders can be found anywhere...from disaster clean up areas to uncleared construction sites. And with each job they're creating value-added products while recycling organic waste into reusable by-products. Whether providing an alternative for timber disposal or grinding stumps and trees, DuraTech is proud of their increasingly prominent role in assuring emptier landfills and cleaner skies for everyone.**

**DuraTech...clearing the way for a better tomorrow.**



**Grinding decorative bark for landscape wholesaler.**

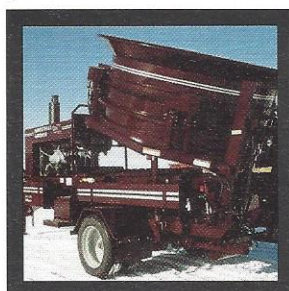
**high p**

## features



**feature**  
Pintle hitch with airbrakes.

**benefit**  
Offers a towing arrangement that allows ease in moving machine around job site, and from job to job.



**feature**  
Tub tilts hydraulically.

**benefit**  
Allows service access to hammermill without need to get into tub to change hammers, rods, spacers and screens.



**feature**  
Electro/hydraulic sensing governor.

**benefit**  
Material feed is electronically controlled for optimum grinding efficiency. Tub speed rotation varies, based on conditions and load.



**feature**  
22' discharge conveyor.

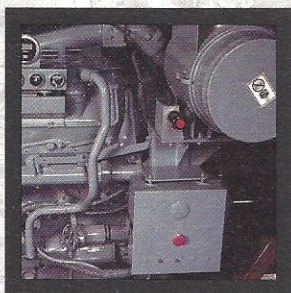
**benefit**  
Allows for loading over the side of a trailer with hydraulic raise, lower and folding.





## owered versatility...HD 10-P Tornado

A pintle hitch makes towing the HD 10-P Tornado very simple. The unit, with a 10' grinding tub, offers a heavy-duty 44" long grinding hammermill for maximum capacity and durability. With an overall weight of 24,500 lbs., the diesel powered Tornado offers horsepower capacities ranging from 275 to 400 hp. Featuring hydraulic fold, plus height adjustment, the discharge conveyor is 22' long to stack material to a height of 18'.



### feature

Centrally located instrument panel.

### benefit

Allows operator to easily monitor all functions from one location.



### feature

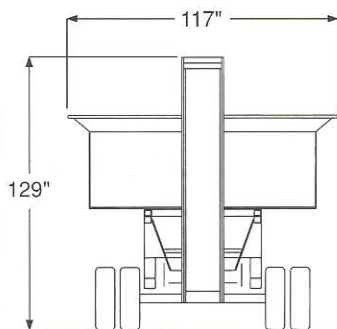
Non-slip hydraulic drive chain.

### benefit

Allows tub to rotate without slippage in drive line when heavy material is loaded.



# HD 10-P TORNADO (PINTLE HITCH)



## OPTIONS

- 3/4" screen thickness
- Gooseneck hitch assembly
- Narrowed tub sides for transport
- 2nd orbit motor on tub drive
- Magnetic roller
- Aluminum deflector chute
- Vandalism protection package
- Tub agitator
- Fuel gauge
- 275-400 hp options available
- 1" swing hammers
- 1" fixed hammers
- 1" fixed hammers w/replaceable tips
- Remote operating controls
- Engine block heater
- Engine turbo II precleaner
- Additional options available

## s p e c i f i c a t i o n s

### GENERAL SPECIFICATIONS

<b>Weight</b>	<b>24,500 lbs.</b>
Transport width	9'9" (117")
<b>Optional transport width</b>	<b>8'6" (with narrowed sides)</b>
Operating loading height	8'8" (104")
<b>Length in transport</b>	<b>35'4" (424") with conveyor in transport position</b>
Axle	(1) - 20,000 lb. axle
<b>Axle tongue weight</b>	<b>2,500 lbs.</b>
Brakes	Air brakes
<b>Tires</b>	<b>(4) - 255 x 70R x 22.5</b>
Towing arrangement	Pintle hitch
<b>Fuel capacity</b>	<b>80 gallon (U.S.) capacity</b>
Hydraulic oil capacity	56 gallon (U.S.) capacity
<b>Lights</b>	<b>Clearance, directional, and tail lights</b>

### TUB FEATURES

Tub width	10'
<b>Depth</b>	<b>46"</b>
Tub diameter at base	8'
<b>Tub wall</b>	<b>3/16" thick</b>
Tub floor	3/8" thick
<b>Tub drive</b>	<b>Hydraulic orbit motor direct drive to chain</b>
Service access	Hydraulic tilting tub
<b>Discharge conveyor</b>	<b>22"(l) x 18"(w) x 8"(d), hydraulic end driven cleated belt</b>
	<b>Hydraulic raise/lower/fold</b>
	30" wide hydraulic end driven cleated belt
	<b>Electronic self-governing</b>
	Safety shutdown

### HAMMERMILL

<b>Feed opening</b>	<b>25" x 45"</b>
Length	44"
<b>Anti-jam plate</b>	<b>5-tooth anti-slug plate installed above hammermill</b>
Cylinder plates	16" diameter 1" thick plates
<b>Cylinder shaft</b>	<b>4 1/2" stress proof steel</b>
Hammermill drive	Direct drive with torque limiter
<b>Bearings</b>	<b>3 1/2" pillow block bearings</b>
Hammers	(66) - 3/4" A.B. hardened swing hammers
<b>Hammer rods</b>	<b>1 1/4" diameter - 43" long case hardened rods</b>
Screens	Split screens 1/2" thick - available in various sized openings
<b>Screen area</b>	<b>2403 square inches</b>

Illustrations, specifications, and descriptions contained herein were accurate at time of publication, but are subject to change without notice. Illustrations may include optional equipment and accessories and may not include all standard equipment.

### DISTRIBUTED BY



PO BOX 1940  
JAMESTOWN, ND 58402-1940  
701-252-4601  
FAX: 701-252-0502

Printed in USA 995-UP

