

HORIZONTAL BALER

EXCEL MODEL EX62

Owners Manual

FOR :

CUSTOMER _____

SN: EX2 _____



CUSTOMER SUPPORT

1-800-475-8812

© January 15th, 2012

2 SPECIFICATIONS

S T R U C T U R A L

HEIGHT - 62" LOADING 52 1/2" FRAME
LENGTH - 179"
WIDTH - 77"
CHAMBER - 47"L x 60"W x 30"H
FEED OPENING - 54"W x 35"L
SHIPPING WEIGHT - 14,000 LBS.

*AREA REQUIRED TO OPERATE - 10' x 20'

H Y D R A U L I C S

PUMP - 34 GAL. PRESSURE COMPENSATED HORSE POWER
LIMITED PISTON PUMP, 4000 PSI RATED
DIRECTIONAL VALVE - D06 PATTERN, HI-FLOW CUSHION SHIFT DESIGN
CYLINDERS - 2 -- 6" BORE x 74" STROKE x 4" HARD CHROME ROD
OIL RESERVOIR - 105 GAL.

E L E C T R I C A L

MOTOR - 20 HP TEFC 230-460 V 3 PHASE
ENCLOSURE - NEMA 12 RATED
CONTROLS - UL/CUL/CE APPROVED NEMA 12 RATED

P E R F O R M A N C E D A T A

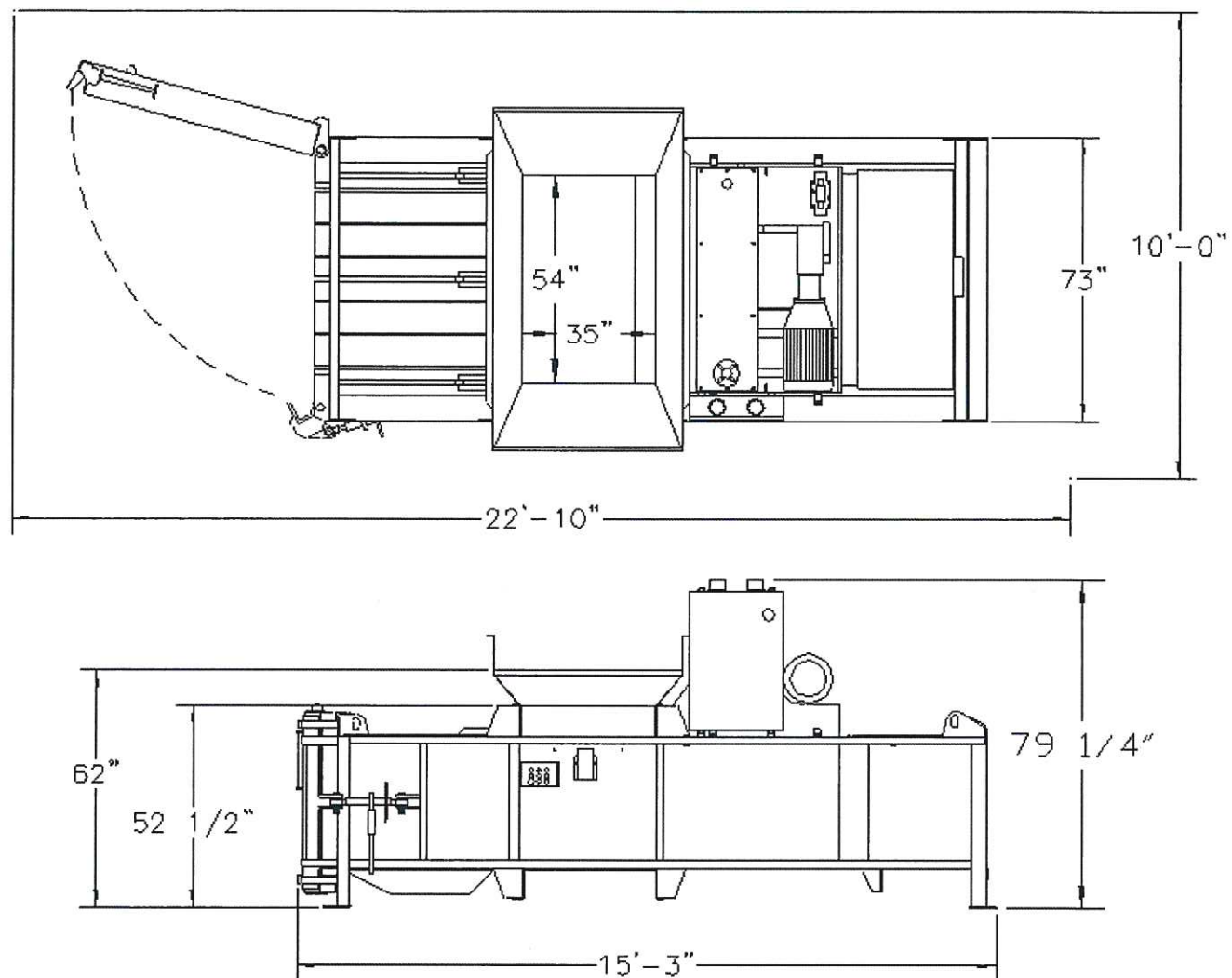
HYD SYSTEM PRESSURE - 3,000 PSI
OVERALL PLATEN FORCE - 159,400 LBS.
PLATEN PSI - 92 PSI
CYCLE TIME - 46 SEC. - 30 SEC. SHORT STROKE
BALE - 60"L x 48"W x 30"H

F I N I S H E D B A L E W E I G H T S

PET - Up to 950 Lbs.
Office Paper - Up to 1700 Lbs.
Newspaper - Up to 1600 Lbs.
Corrugated Cardboard - Up to 1250 Lbs.
Tin Cans - Up to 1300 Lbs.
Aluminum Cans - Up to 650 Lbs.
HDPE - Up to 1100 Lbs.

*See diagram on next page.

Diagram A. EXCEL Model EX62 Structural Specifications Diagram.



EXCEL CONVEYOR

MODEL E-4815

Owners Manual
FOR:

SN: _____



CUSTOMER SUPPORT
1-800-475-8812

© September 1998

4815 SERIES CONVEYOR

SPECIFICATIONS

EXCEL MODEL E-4815 REAR LOAD CONVEYOR GENERAL SPECIFICATIONS

S T R U C T U R A L

HEIGHT (CONVEYOR DUMP) - 10 FEET
OVERALL LENGTH - 15' BETWEEN PULLEY CENTERS
PULLEY - 10" DIAMETER
HOPPER - 1.23 CUBIC YARD, 42 5/8" LOADING HEIGHT,
REINFORCED 10 GAGE CONSTRUCTION
OVERALL CONSTRUCTION - 10 GAGE STEEL, 3" x 4" STEEL TUBE FRAME,
3/8" STEEL END SECTIONS FOR
PULLEY AND MOTOR MOUNTING

B E L T I N G

160 LB. MEDIUM OIL RESISTANT - 48" WIDE, 3" HIGH CLEAT AT 30" INTERVALS

E L E C T R I C A L

2 HP - 88.5% ENERGY EFFICIENT
- 230/460 VOLT 3 PHASE
- OPTIONAL BALDOR SMART MOTOR

G E A R R E D U C E R

DODGE TXT 225 - 98.5% ENERGY EFFICIENT
DUAL V-BELT, BELT REDUCTION

F E A T U R E S

UL APPROVED CONTROLS WITH EMERGENCY SHUT OFF
16" CONVEYOR SIDES ABOVE BELT
FULL BELT FLASHING
SELF CLEANING UNDERBELT SYSTEM
REMOTE START/STOP/VARIABLE SPEED CONTROLS
ALL DODGE USA COMPONENTS

DUE TO EQUIPMENT UPGRADES SPECIFICATIONS ARE SUBJECT TO CHANGE

BASIC PART IDENTIFICATION

Diagram B. EXCEL Conveyor Basic Parts Identification Diagram.

