

## Generator set data sheet



**Model:** C28 D5 (X-series)  
**Frequency:** 50 Hz  
**Fuel type:** Diesel

<b>Spec sheet:</b>	<b>SS26-CPGK</b>
<b>Noise data sheet (open/enclosed):</b>	<b>ND50-OS550/ND50-CS550</b>
<b>Airflow data sheet:</b>	<b>AF50-550</b>
<b>Derate data sheet (open/enclosed):</b>	<b>DD50-OS550/DD50-CS550</b>
<b>Transient data sheet:</b>	<b>TD50-550</b>

<b>Fuel consumption</b>	<b>Standby</b>				<b>Prime</b>			
	<b>kVA (kW)</b>				<b>kVA (kW)</b>			
<b>Ratings</b>	27.5 (22)				25 (20)			
<b>Load</b>	<b>1/4</b>	<b>1/2</b>	<b>3/4</b>	<b>Full</b>	<b>1/4</b>	<b>1/2</b>	<b>3/4</b>	<b>Full</b>
<b>gph</b>	0.7	1.0	1.4	1.7	0.7	1.0	1.3	1.6
<b>L/hr</b>	2.8	3.8	5.2	6.5	2.7	3.6	4.8	6.0

<b>Engine</b>	<b>Standby rating</b>	<b>Prime rating</b>
Engine manufacturer	Cummins	
Engine model	X2.5G2	
Configuration	4 cycle, in-line, 3 cylinder diesel	
Aspiration	Naturally aspirated	
Gross engine power output, kWm	27	24.37
BMEP at set rated load, kPa	863.9	779.8
Bore, mm	91.4	
Stroke, mm	127	
Rated speed, rpm	1500	
Piston speed, m/s	6.35	
Compression ratio	18.5:1	
Lube oil capacity, L	7.3	
Overspeed limit, rpm	1725	
Regenerative power, kW	2	
Governor type	Mechanical - Std	
Starting voltage	12 Volts DC	

<b>Fuel flow</b>	
Maximum fuel flow, L/hr	40
Maximum fuel inlet restriction, mm Hg	73.66
Maximum fuel inlet temperature, °C	60

<b>Air</b>	<b>Standby rating</b>	<b>Prime rating</b>
Combustion air, m <sup>3</sup> /min	2.30	2.30
Maximum air cleaner restriction, kPa	4	

## Exhaust

Exhaust gas flow at set rated load, m <sup>3</sup> /min		
Exhaust gas temperature, °C	660	660
Maximum exhaust back pressure, kPa	3.38	

## Standard set-mounted radiator cooling

Ambient design, °C	50	
Fan load, kW <sub>m</sub>	0.95	
Coolant capacity (with radiator), L	15	
Cooling system air flow, m <sup>3</sup> /sec @ 12.7 mmH <sub>2</sub> O	0.78	
Total heat rejection, Btu/min	882	
Maximum cooling air flow static restriction mm H <sub>2</sub> O		

## Weights\*

	<b>Open</b>	<b>Enclosed</b>
Unit dry weight kgs	648	928
Unit wet weight kgs	799	1079

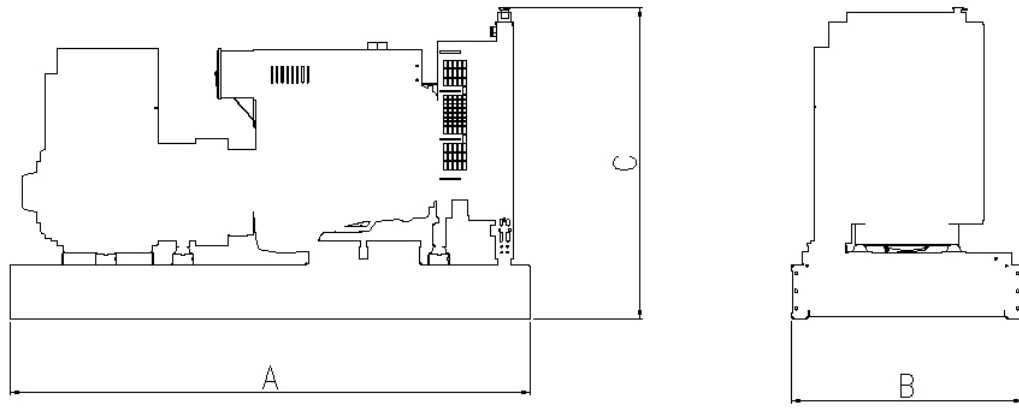
\* Weights represent a set with standard features. See outline drawing for weights of other configurations.

## Dimensions

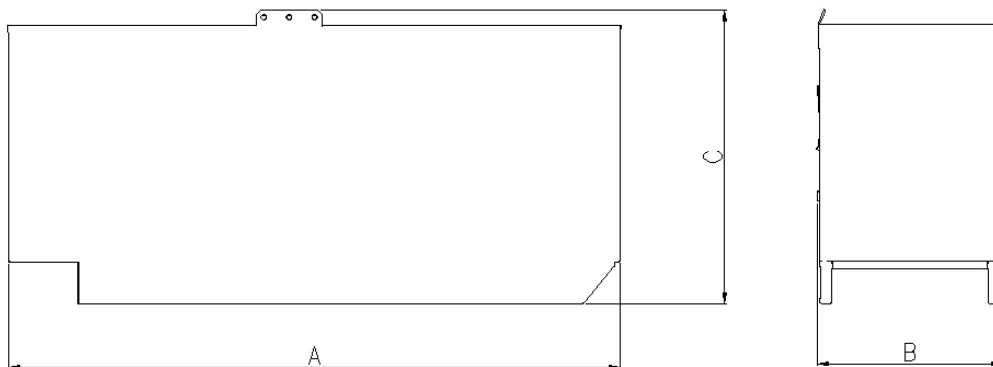
	<b>Length (A)</b>	<b>Width (B)</b>	<b>Height (C)</b>
Standard open set dimensions in mm	1667	930	1282
Enclosed set standard dimensions in mm	2082	987	1525

## Genset outline

### Open set



### Enclosed set



Outlines are for illustrative purposes only. Please refer to the genset outline drawing for an exact representation of this model.

**Our energy working for you.™**

©2014 Cummins Power Generation Inc. | DS342-CPGK-RevF (6/14)

[cumminspower.com](http://cumminspower.com)

## Alternator data

Connection <sup>1</sup>	Temp rise °C	Duty <sup>2</sup>	Alternator	Voltage
3 phase	163/125	S/P	PI144F	380-416V
3 phase	125/105	S/P	PI144G	380-440V
1 phase	125/105	S/P	PI144G	220-240V

## Ratings definitions

Emergency standby power (ESP):	Limited-time running power (LTP):	Prime power (PRP):	Base load (continuous) power (COP):
Applicable for supplying power to varying electrical load for the duration of power interruption of a reliable utility source. Emergency Standby Power (ESP) is in accordance with ISO 8528. Fuel Stop power in accordance with ISO 3046, AS 2789 and DIN 6271.	Applicable for supplying power to a constant electrical load for limited hours. Limited Time Running Power (LTP) is in accordance with ISO 8528.	Applicable for supplying power to varying electrical load for unlimited hours. Prime Power (PRP) is in accordance with ISO 8528. Ten percent overload capability is available in accordance with ISO 3046, AS 2789 and DIN 6271.	Applicable for supplying power continuously to a constant electrical load for unlimited hours. Continuous Power (COP) is in accordance with ISO 8528, ISO 3046, AS 2789 and DIN 6271.

## Formulas for calculating full load currents:

### Three phase output

$$\frac{\text{kW} \times 1000}{\text{Voltage} \times 1.73 \times 0.8}$$

### Single phase output

$$\frac{\text{kW} \times \text{SinglePhaseFactor} \times 1000}{\text{Voltage}}$$

### See your distributor for more information.

Cummins Power Generation  
 Manston Park, Columbus Avenue  
 Manston, Ramsgate  
 Kent CT12 5BF, UK  
 Telephone: +44 (0) 1843 255000  
 Fax +44 (0) 1843 255902  
 E-mail: [cpg.uk@cummins.com](mailto:cpg.uk@cummins.com)  
 Web: [www.cumminspower.com](http://www.cumminspower.com)

### Our energy working for you.™

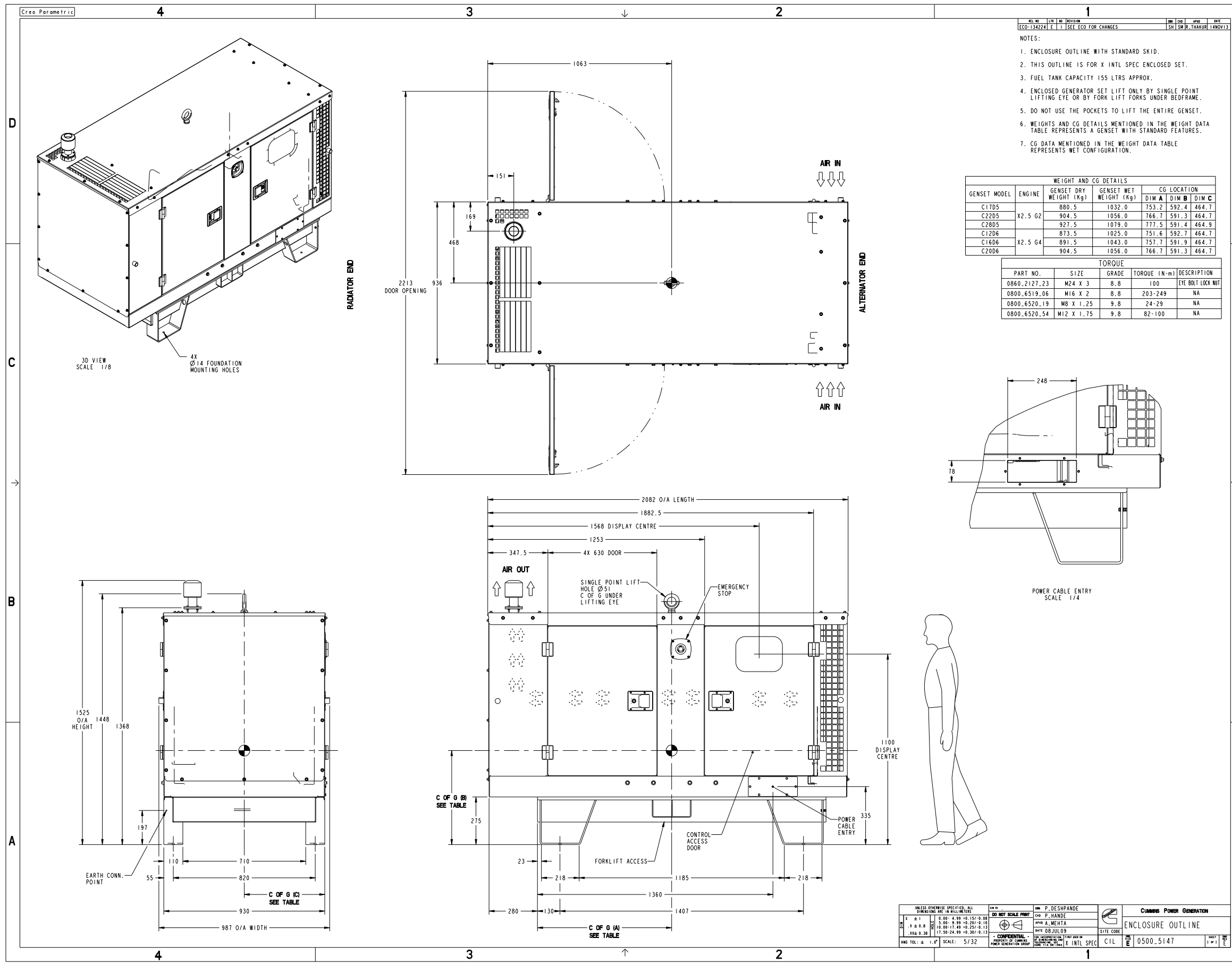
©2014 Cummins Power Generation Inc. All rights reserved.

Cummins Power Generation and Cummins are registered trademarks of Cummins Inc. PowerCommand, AmpSentry, InPower and "Our energy working for you." are trademarks of Cummins Power Generation. Other company, product, or service names may be trademarks or service marks of others. Specifications are subject to change without notice.

DS342-CPGK-RevF (6/14)



[cumminspower.com](http://cumminspower.com)



- 1
- | REV. NO.    | DATE | BY | CHKD.               | APPD. | DATE       |
|-------------|------|----|---------------------|-------|------------|
| ECO-1342241 | E    | 1  | SEE ECO FOR CHANGES | SHI   | 28.06.2018 |
- NOTES:
- ENCLOSURE OUTLINE WITH STANDARD SKID.
  - THIS OUTLINE IS FOR X INTL SPEC ENCLOSED SET.
  - FUEL TANK CAPACITY 155 LTRS APPROX.
  - ENCLOSED GENERATOR SET LIFT ONLY BY SINGLE POINT LIFTING EYE OR BY FORK LIFT FORKS UNDER BEDFRAME.
  - DO NOT USE THE POCKETS TO LIFT THE ENTIRE GENSET.
  - WEIGHTS AND CG DETAILS MENTIONED IN THE WEIGHT DATA TABLE REPRESENTS A GENSET WITH STANDARD FEATURES.
  - CG DATA MENTIONED IN THE WEIGHT DATA TABLE REPRESENTS WET CONFIGURATION.

GENSET MODEL	ENGINE	GENSET WEIGHT (Kg)		CG LOCATION		
		GENSET DRY WEIGHT	GENSET WET WEIGHT	DIM A	DIM B	DIM C
C17D5		880.5	1032.0	753.2	592.4	464.7
C22D5	X2.5 G2	904.5	1056.0	766.7	591.3	464.7
C28D5		927.5	1079.0	777.5	591.4	464.9
C12D6		873.5	1025.0	751.6	592.7	464.7
C16D6	X2.5 G4	891.5	1043.0	757.7	591.9	464.7
C20D6		904.5	1056.0	766.7	591.3	464.7

PART NO.	SIZE	GRADE	TORQUE (N-m)	DESCRIPTION
0860.2127.23	M24 X 3	8.8	100	EYE BOLT LOCK NUT
0800.6519.06	M16 X 2	8.8	203-249	NA
0800.6520.19	M8 X 1.25	9.8	24-29	NA
0800.6520.54	M12 X 1.75	9.8	82-100	NA

UNLESS OTHERWISE SPECIFIED, ALL DIMENSIONS ARE IN MILLIMETERS		DO NOT SCALE PRINT		CUMMINS POWER GENERATION	
ANG TOL: ± 1.0°	SCALE: 5/32	DATE: 08 JUL 09	SITE CODE:	CIL	0500_5147
PROPERTY OF CUMMINS POWER GENERATION GROUP		X INTL SPEC		ENCLOSURE OUTLINE	

**Part A024T141 E**

Description	Legacy Name	External Regulations	Application Status	Release Phase Code	Security Classification	Alternates
OUTLINE,ENCLOSURE	0500-5147	None	Production & Service	Production	Public	

---

**Part Specifications :A024T141 E**

Name	Description	Legacy Name
A030B356	SPECIFICATION,MATERIAL	CES10903
A024U388	DRAWING,ENGINEERING	0500-5147