

SULZER ESCHER WYSS

MIDDLETOWN, OHIO 45042

AC 513 / 423-9281

FILE _____

NO. _____

GENERAL INFORMATION

INTRODUCTION

The SULZER ESCHER WYSS Series 200 Pressure/Vacuum Headbox is a single pass, rectifier roll headbox. This headbox is capable of operating with either a pressurized air pad or a vacuum "air pad" to facilitate operation over a broad range of machine speeds.

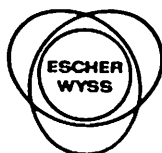
During pressure operation, the headbox utilizes a controlled air pad to replace the high pond level to achieve suitable pressure, or "head", required to achieve desired jet velocities. In open headboxes, this pressure is obtained by running with high pond levels. (approximately 52" for 1000 FPM) In such headboxes, dead pockets of flow result where flocs and dirt will accumulated, causing formation and runability problems.

By running with an air pad, it is possible to maintain relatively low pond levels (5 to 9") in which the constant and uniform flow rate is controlled to suit operating conditions and maintain cleanliness.

During vacuum operation, the headbox air supply system develops a vacuum over the pond (replacing the air pad with "negative" pressure). This makes it possible to operate at low machine speeds, where the required "head" is below the desired pond level. (Note - at 300 FPM the Total Head is 4.66")

The SEW Series 200 Pressure/Vacuum Headbox is designed to provide uniform cross machine distribution and "easy to operate" adjustments for the papermaker. These adjustments simplify the operator's task.

It must be noted that the operation of any headbox is related closely to the functioning of the approach flow system and the arrangement and condition of the Fourdrinier table elements.



PRESSURE / VACUUM HEADBOX
GENERAL INFORMATION

BY _____

DATE _____

SHT. 1 OF _____

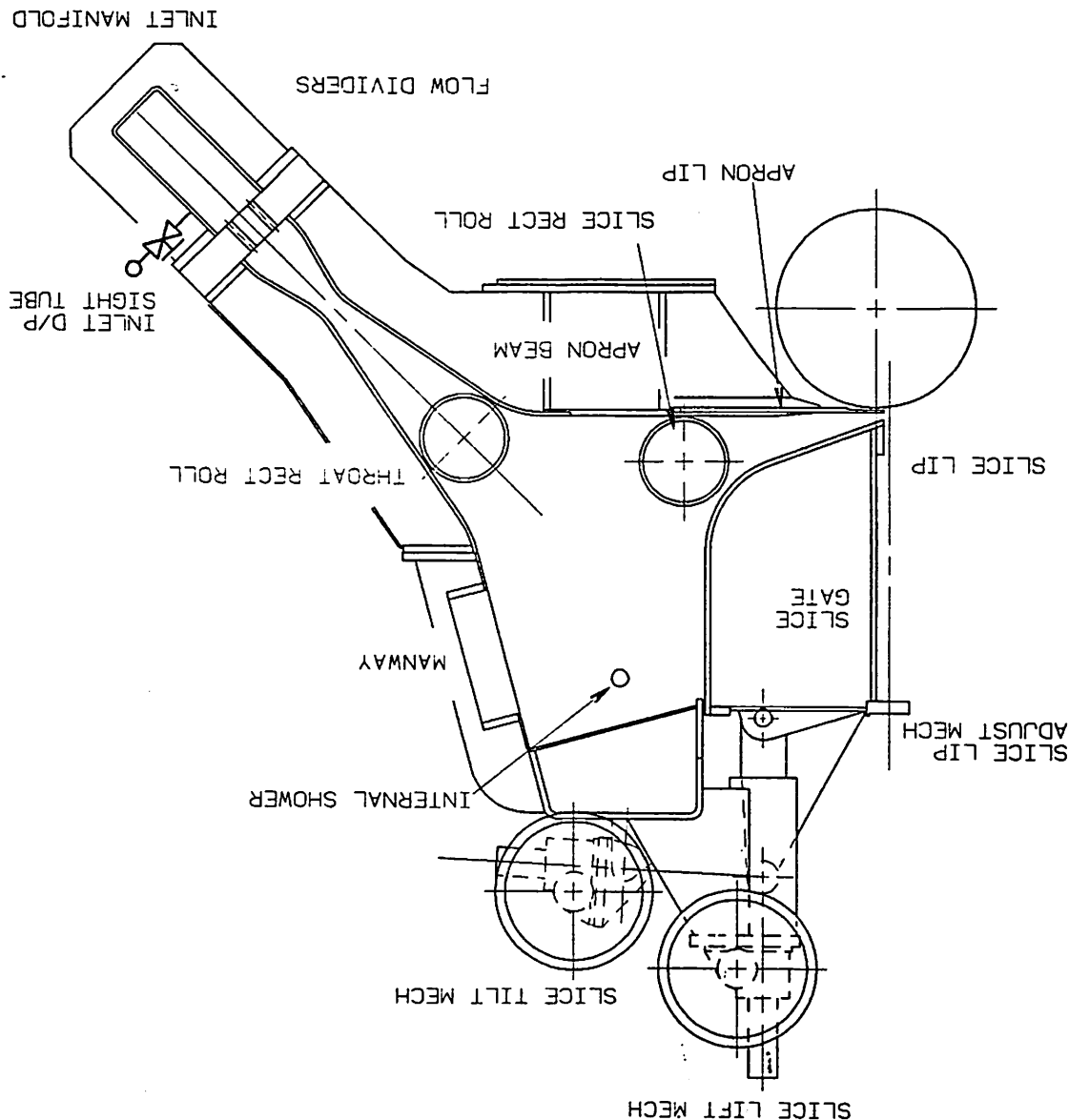


PRESSURE/VACUUM HEADBOX

BY
DATE

SHT 2 OF

CROSS SECTION VIEW OF HEADBOX
FIGURE 1



THIS DOCUMENT, ITS PRINTS, AND ALL PARTS THEREOF ARE AND SHALL REMAIN PROPERTY OF SULZER ESCHER WYSS, INC. AND MAY NOT BE REPRODUCED OR USED FOR ANY PURPOSE WITHOUT ITS WRITTEN APPROVAL.

SULZER ESCHER WYSS
MIDDLETOWN, OHIO 45042
AC 513 / 423-9281

NO.

FILE