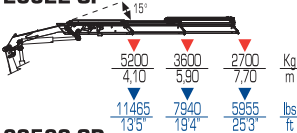
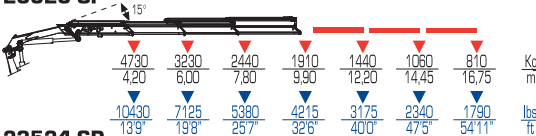




23522 SP



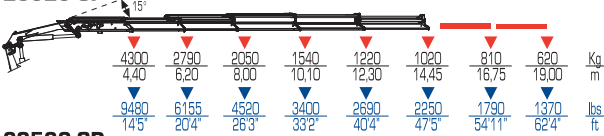
23523 SP



23524 SP



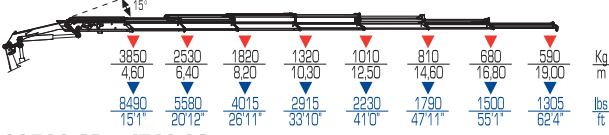
23525 SP



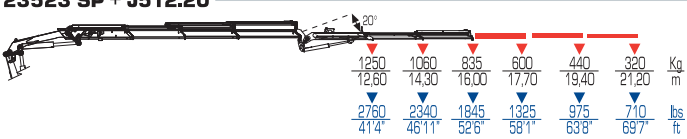
23526 SP



23527 SP

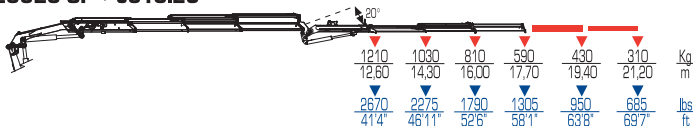


23523 SP + J512.20

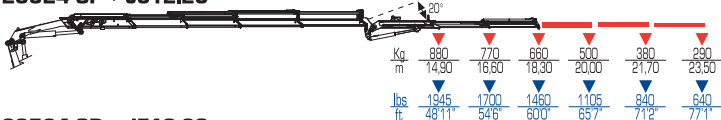


	tm	ft lbs	l/min	gals/min	Mpa	Psi
23522 SP	21,3	154210	80	21	32	4640
23523 SP	19,8	143210	80	21	30,5	4640
23524 SP	19,3	139650	80	21	29,5	4640
23525 SP	18,9	136700	80	21	29,5	4640
23526 SP	18,6	134580	80	21	29,5	4640
23527 SP	17,7	128020	80	21	29,5	4640
23523 SP + J512.20	-	-	80	21	30,5	4640
23523 SP + J513.20	-	-	80	21	30,5	4640
23524 SP + J512.20	-	-	80	21	29,5	4640
23524 SP + J513.20	-	-	80	21	29,5	4640
23524 SP + J514.20	-	-	80	21	29,5	4640
23525 SP + J512.20	-	-	80	21	29,5	4640
23525 SP + J513.20	-	-	80	21	29,5	4640
23525 SP + J514.20	-	-	80	21	29,5	4640
23526 SP + J252	-	-	80	21	29,5	4640

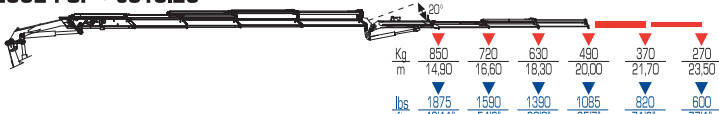
23523 SP + J513.20



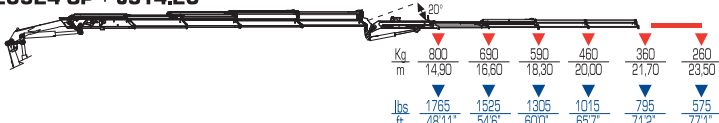
23524 SP + J512.20



23524 SP + J513.20



23524 SP + J514.20



23525 SP + J512.20



23525 SP + J513.20



23525 SP + J514.20



23526 SP + J252



°	kg		lb		mm		ft		mm		ft	
	ST	ST	LC	LC	mm	ft	mm	ft	mm	ft	mm	ft
400	2125	4685	2245	4950	2455	8'	2250	7'4"	980	3'2"		
400	2275	5020	2395	5285	2455	8'	2250	7'4"	980	3'2"		
400	2415	5325	2535	5590	2455	8'	2250	7'4"	980	3'2"		
400	2550	5625	2670	5890	2455	8'	2305	7'5"	1040	3'4"		
400	2670	5890	2790	6155	2455	8'	2365	7'7"	1060	3'5"		
400	2775	6120	2895	6385	2455	8'	2405	7'9"	1100	3'6"		
400	2775	6120	2895	6385	2500	8'	2645	8'6"	1220	4'		
400	2830	6240	2950	6505	2500	8'	2645	8'6"	1220	4'		
400	2930	6460	3050	6725	2500	8'	2660	8'7"	1220	4'		
400	2985	6585	3105	6850	2500	8'2"	2660	8'7"	1220	4'		
400	3035	6695	3155	6960	2500	8'2"	2660	8'7"	1220	4'		
400	3105	6850	3225	7110	2500	8'2"	2660	8'7"	1220	4'		
400	3160	6970	3280	7285	2500	8'2"	2660	8'7"	1220	4'		
400	3210	7080	3330	7280	2500	8'2"	2660	8'7"	1220	4'		
400	3170	6990	3290	7255	2515	8'2"	2610	8'5"	1220	4'		