

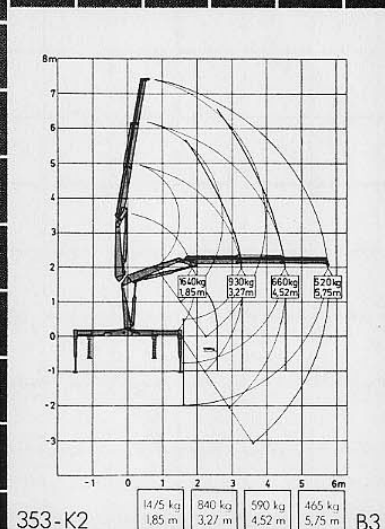
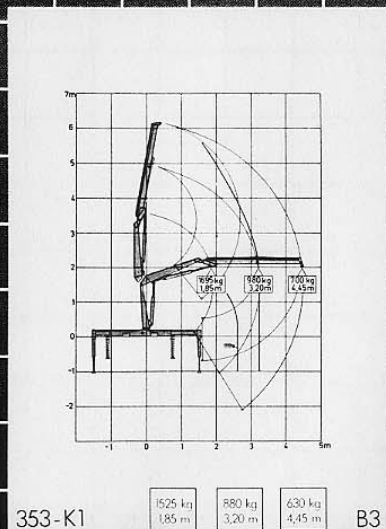
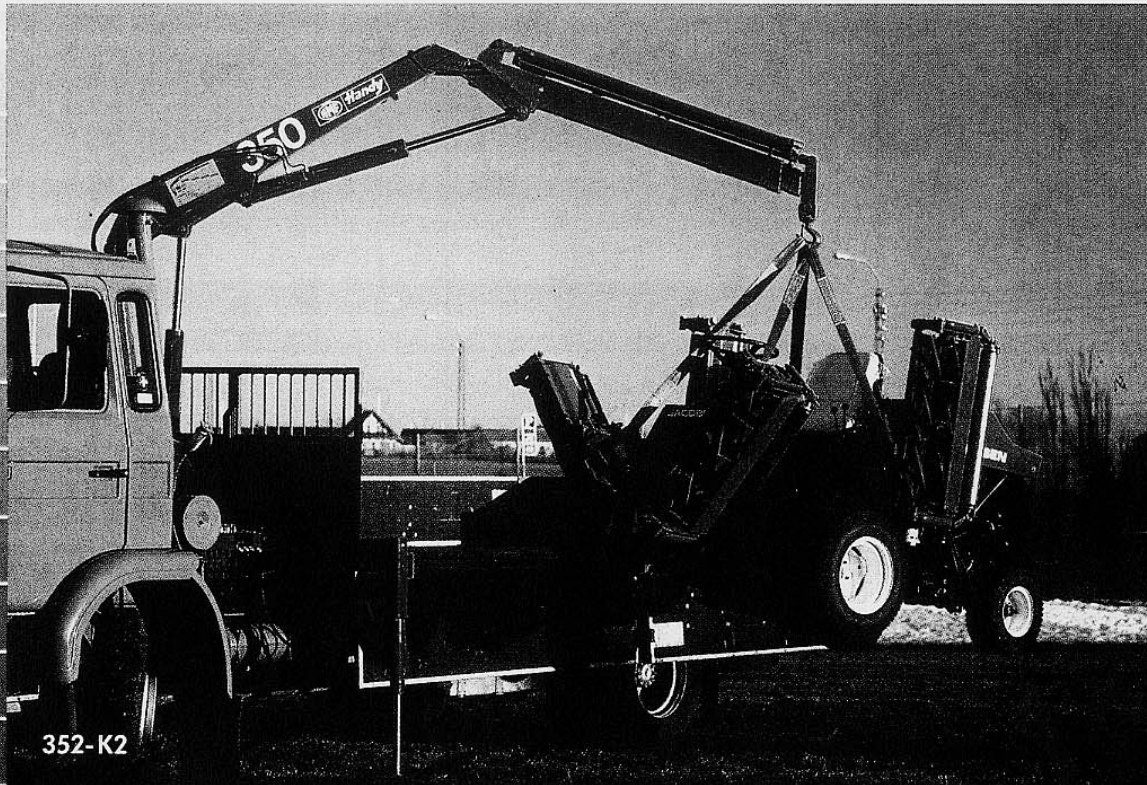


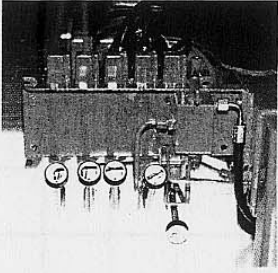
# Handy

29 SET. 2000

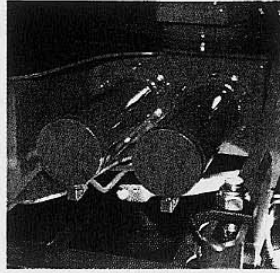
# 350-K SERIES

Continues where others have to give up

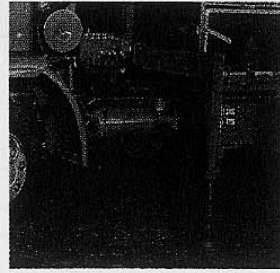




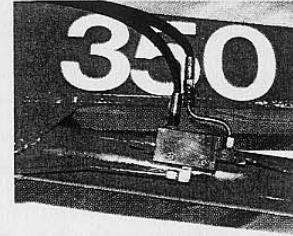
HMF control valves ensure smooth and accurate operation



The powerful twin-rack slewing system is built into the oil-filled base.



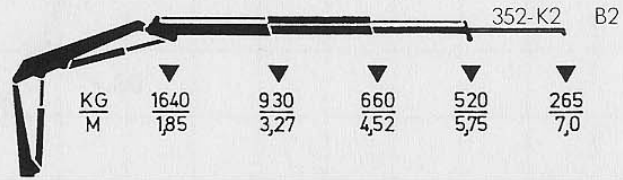
The 350-series' stabilizer legs are easy to operate. Built-in check valves lock the stabilizer legs under all circumstances.



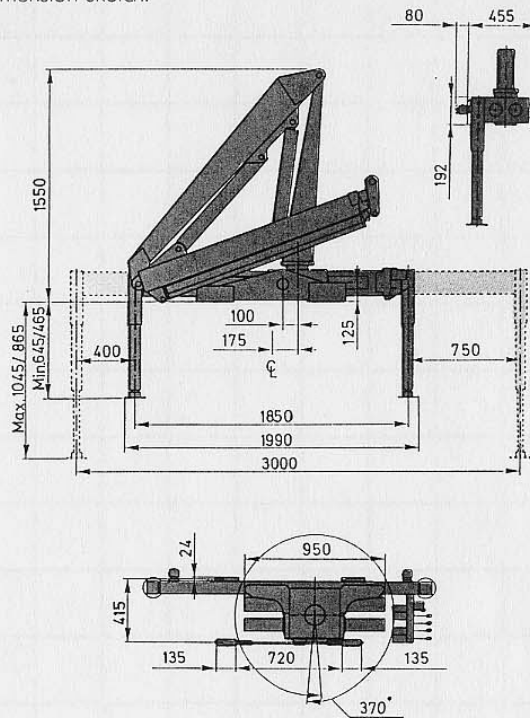
Load-holding valves on all rams: the little extra that makes all the difference in safety.

New design in high tensile steel offers greater performance and flexibility - at the lowest own weight on the market  
Supreme reach, outdistancing competition by far

Low height in folded position  
Can be supplied with space saving M-base (stationary mounting)  
Large slewing area with double slewing system  
Load-holding valves on all rams give maximum safety



Dimension sketch:



### Technical Data

Loading group B2	352-K2	352-K1
Load moment	3.0 tm	3.1 tm
Hydraulic reach	5.75 m	4.45 m
Manual reach (optional extra)	7.00 m	7.00 m
Slewing torque	575 kgm	575 kgm
Slewing angle	370°	370°
Height above chassis	1550 mm	1550 mm
Width when folded	1990 mm	1990 mm
Length	455 mm	455 mm
Own weight (incl. stabilizer legs)	480 kg	450 kg
Working pressure	225 bar	225 bar
Pump performance	16 l/min.	16 l/min.
Oil tank capacity in base	10.5 l	10.5 l
Power consumption	8.8 hp	8.8 hp

We reserve the right to introduce improvements and modifications.

