

HMF 1075-K



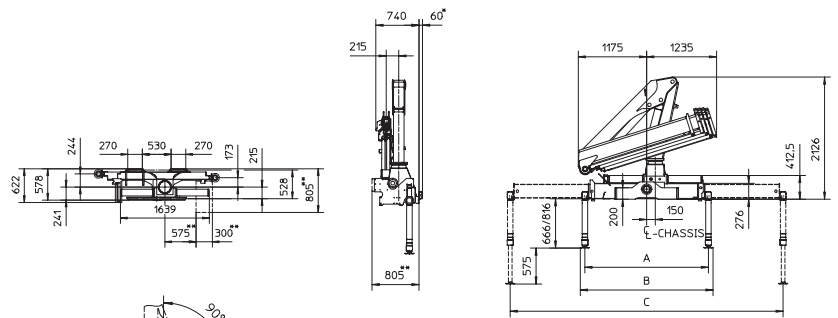
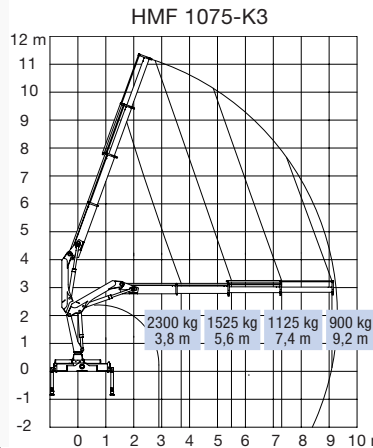
- power to lift.

HMF Knuckle Boom Loader 1075-K

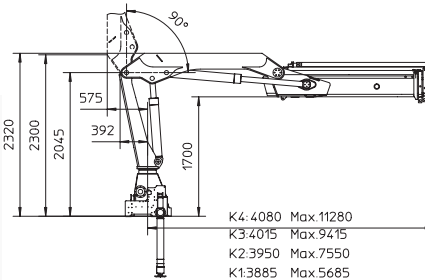
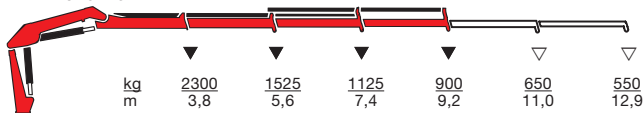
HMF loader Series 1075-K in the 10 tm range

- The HMF 1075-K is a radio remote controlled loader equipped with HDL system which offers a considerable increase in the lifting capacity.
- The HMF 1075-K is a flexible loader which meets the requirements for heavy duty lifting without considerably increasing the tare weight of the loader.
- Stepless transition to HDL mode ensures a smooth movement under load.
- The 1075-K is suitable for hook applications and for use in conjunction with hydraulic attachments such as rotator and grab, which make this 10 tonne-metre loader a very useful and versatile lifting tool.
- Regeneration of the oil in all extension cylinders provides high working speeds on the jib extension movements.
- Available as standard with HMF's totally integrated user-friendly RCL Safety System, which only intervenes when absolutely necessary.
- Can be specified with 2-stage LMB or EVS safety systems, which allow the operator to concentrate on difficult tasks whilst ensuring the vehicle remains stable.
- The loader series is available with the following options: stand-up control, top seat, winch, transport alarm and temperature monitoring.

| Loading group B3 | | 1075-K1 | 1075-K2 | 1075-K3 | 1075-K4 |
|-------------------------------------|-------|---------|---------|---------|---------|
| Load moment | tm | | | 8.8 | |
| Hydraulic reach | m | | | 9.4 | |
| Slewing torque | kgm | | | 1390 | |
| Slewing angle | ° | | | 400 | |
| Height above chassis | mm | | | 2130 | |
| Width, folded | mm | | | 2350 | |
| Length of loader, no extra valves | mm | | | 680 | |
| Length of loader, with extra valves | mm | | | 740 | |
| Stabilizer spread, standard | mm | | | 4650 | |
| Stabilizer spread, double extension | mm | | | 5750 | |
| Weight excl. stabilizers | kg | | | 1230 | |
| Weight of stabilizers, standard | kg | | | 173 | |
| Working pressure | MPa | | | 33 | |
| Pump performance | l/min | | | 25 | |
| Oil tank capacity, separate tank | l | | | 42 | |
| Power consumption | kW | | | 13 | |



HMF 1075-K3



* Extra length, hydraulically extensible stabilizer beams.

** Incl. Danfoss + RC or temperature monitoring.

| | S | D |
|---|------|------|
| A | 2150 | 2220 |
| B | 2310 | 2380 |
| C | 4650 | 5750 |

