

HMF 1244-Z



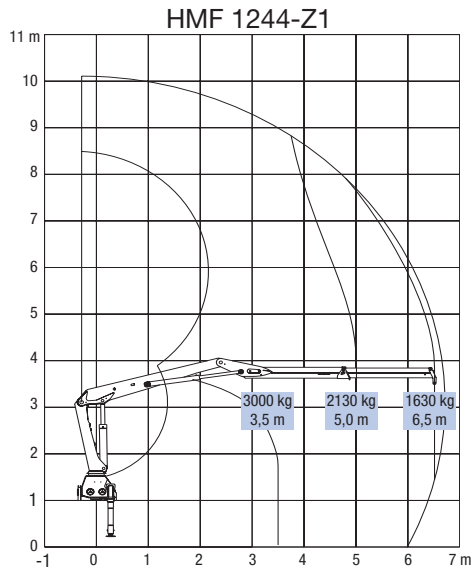
- power to lift.

HMF Grab Loader 1244-Z

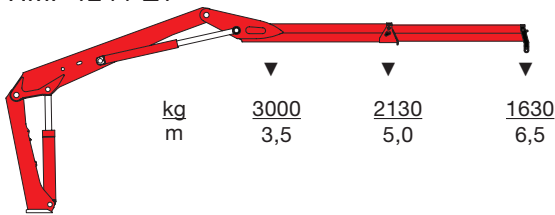
A sturdy B4 rated Grab Loader for rough Working

- Modern design offering very compact installation with long reach.
- Low tare weight offering improved vehicle payload.
- Well suited to many different purposes thanks to optimized boom geometry.
- Reliable and sturdy design.
- Simple and user-friendly RCL Safety System.
- Ergonomically designed operator platforms for easy operation and access.
- High speed operation ensures optimal performance.
- Efficient protection of hydraulic hoses.
- Available with radio remote control or top seat as optional extras.
- Available with one or two hydraulic extensions.

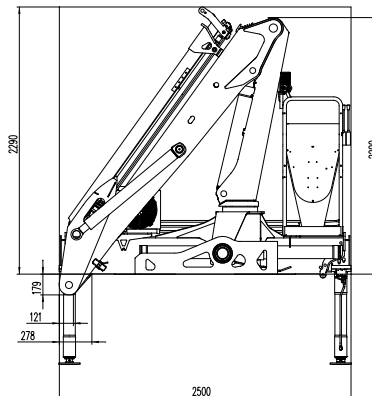
| Loading group B4 | 1244-Z1 | |
|---|---------|-----------|
| Load moment | tm | 10.7 |
| Hydraulic reach | m | 6.7 |
| Slewing torque | kgm | 2400 |
| Slewing angle | ° | 400 |
| Height above chassis | mm | 2258 |
| Height above chassis, parked in body min. | mm | 2200 |
| Width, folded | mm | 2500 |
| Length incl. extra valves | mm | 750 |
| Stabilizer spread, standard | mm | 3500 |
| Stabilizer spread, double extension | mm | 4600 |
| Weight, excl. stabilizers | kg | 1530 |
| Weight of stabilizers, standard | kg | 210 |
| Working pressure | MPa | 28.0 |
| Pump performance | l/min | 1x60/2x50 |
| Power consumption | kW | 28/47 |
| Oil tank capacity, separate tank | l | 90-160 |



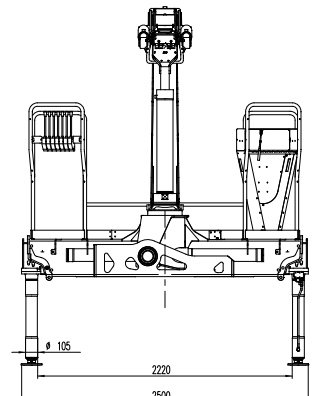
HMF 1244-Z1



HMF 1244-Z2



HMF 1244-ZC



Z008000-5



We reserve the right to introduce improvements and modifications

Højbjerg Maskinfabrik A/S • Oddervej 200 • DK-8270 Højbjerg
Tel.: +45 8627 0800 • Fax: +45 8627 0744 • info@hmf.dk

www.hmf.dk