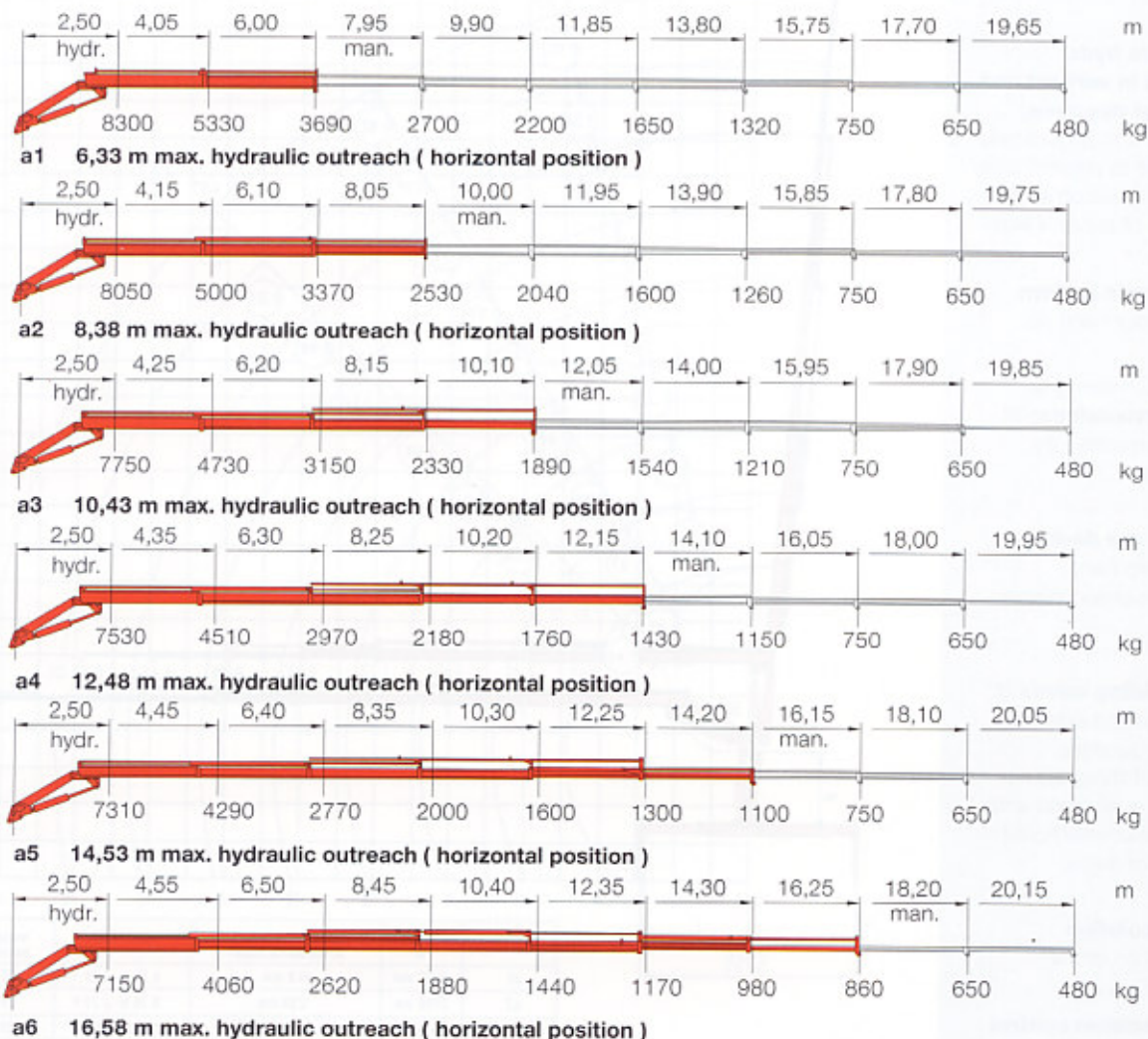


TECHNICAL DATA



Position of main boom +30°. All lifting capacities for max. hydr. outreach are to be understood excluding any manual extensions. All data given without obligation and subject to alteration without notice.

HLK 225 HP (up to 225 kNm)

Technical Data		a1	a2	a3	a4	a5	a6
		single extension	double extension	triple extension	quadruple extension	quintuple extension	sixfold extension
Standard reach max.	m	6,33	8,38	10,43	12,48	14,53	16,58
Hydraulic extension (under load)	m	1,95	3,90	5,85	7,80	9,75	11,70
Height in transport position (from subframe)	m	2,40	2,40	2,40	2,40	2,40	2,50
Width of crane, support legs retracted (standard)	m	2,55	2,55	2,55	2,55	2,55	2,55
Stabilizer width (standard)	m	5,76	5,76	5,76	5,76	5,76	5,76
Width of crane incl. b2 (extra wide stabilizers)	m	2,55	2,55	2,55	2,55	2,55	2,55
Stabilizer width incl. b2	m	6,53	6,53	6,53	6,53	6,53	6,53
Max. operating pressure	bar	320	320	320	320	320	320
Min. engine output	kw/hp	25/34	25/34	25/34	25/34	25/34	25/34
Min. pump capacity	l/min	45	45	45	45	45	45
Slewing range	°	410	410	410	410	410	410
Slewing moment	Nm	32000	32000	32000	32000	32000	32000
Capacity of oil tank	l	85	85	85	85	85	85
Slewing speed 410°	sec.	30	30	30	30	30	30
Luffing speed from min. to max.	sec.	25	25	25	25	25	25
Dead weight incl. extendable supports	approx. kg	2520	2695	2845	2980	3080	3180
Add. weight for b5 (4-fold stab. system)	approx. kg	450	450	450	450	450	450
Space required (depending on superstructure)	m	0,92	0,92	0,92	0,96	1,04	1,04
Space required incl. d3 (hose-guide)	m	1,01	1,01	1,06	1,10	1,18	1,18

a real truck crane in the 22,5 m/t category

Stabilizers hydr. operated in vertical and horizontal direction, equipped with piloted twin stop-valves to prevent unintentional retraction and/or extension of support legs.

Dual linkage system at main boom and jib.

Large reach owing to **6 hydr. extensions;** all man. extensions fully retractable.

All rams are double acting with hard chromium plated piston rods.

Load holding valves at lifting-, jib- and extension rams to guarantee position of lifting boom and load at all times and to prevent unintentional lowering of same.

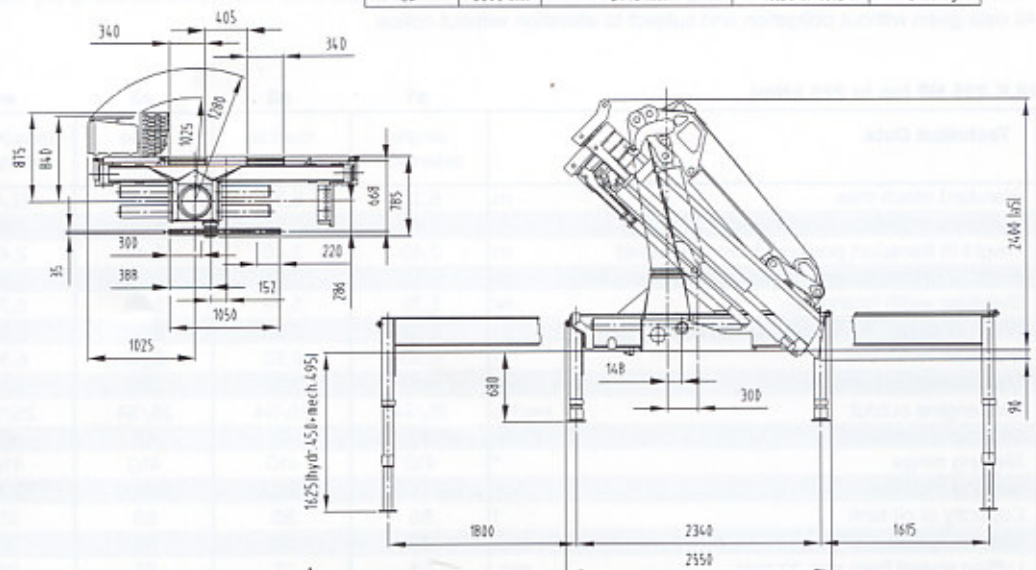
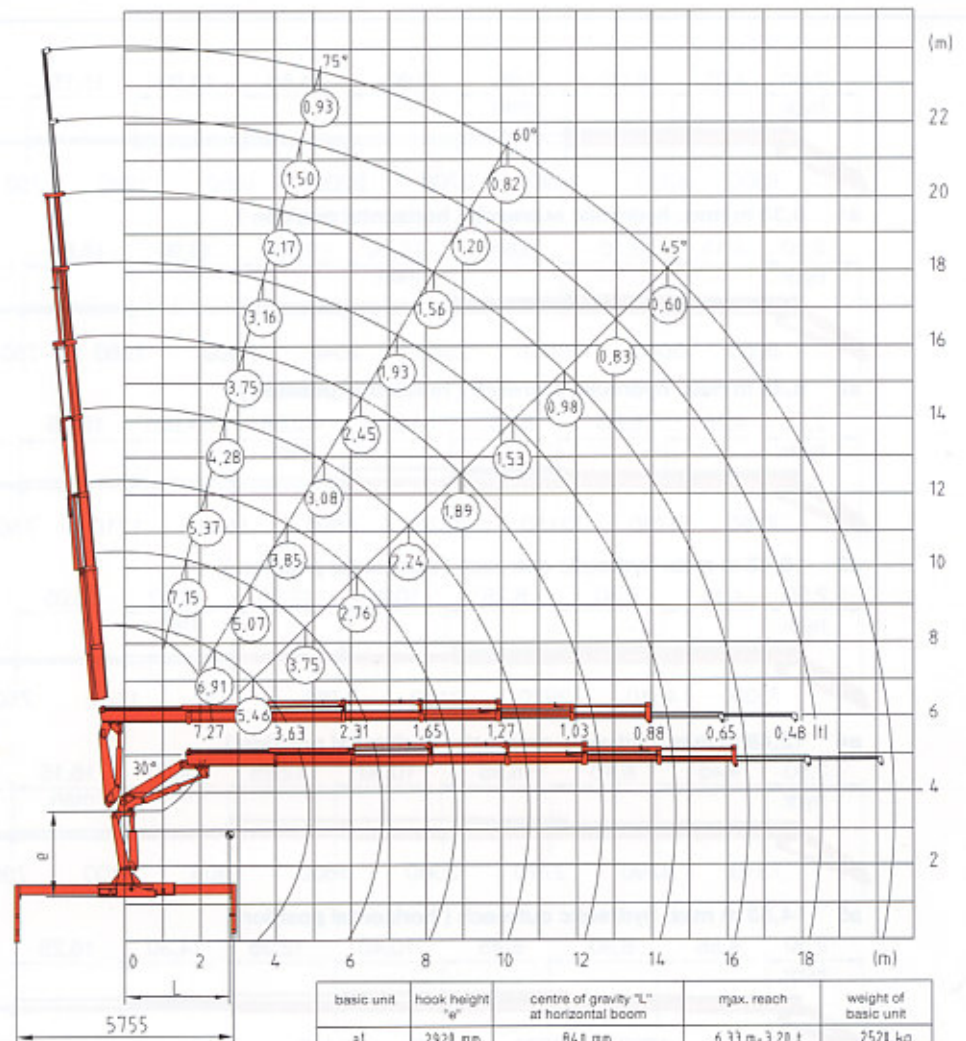
3rd articulation (hydr. jib) on request.

High precision control valves with integrated safety- and suction valves for two motions simultaneously.

Low dead weight due to high tensile steel components.

Cranes fitted behind the cabin may require a slewing limitation for stability reasons, if the chassis is too light.

Made in Germany; All components of DIN-standard.



MKG Maschinen- und Kranbau GmbH, Daimler-Benz-Str. 6, D-49681 Garrel
Telefon (0 44 74) 89 7-0, Telefax (0 44 74) 8 97-10