

EBB Electronic Black Box

Scheda di elettronica studiata da AMCO VEBA per garantire un controllo efficace ed affidabile della gru in tutte le condizioni di lavoro. Il display fornisce all'operatore tutte le informazioni circa lo stato della gru, degli eventuali accessori installati e della manutenzione programmata. Tutti i componenti sono di derivazione automobilistica e garantiscono la massima affidabilità.

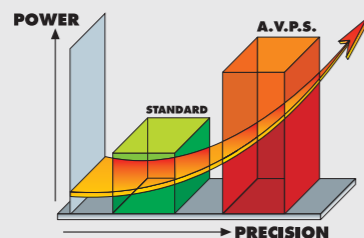
AMCO VEBA has designed this control motherboard to assure an effective and reliable control of the crane in every working condition. The operator can read on the display all informations about the state of the crane, of the accessories and of the routine maintenance. All components are designed according to automotive industry stds. and assure the highest reliability.



AVPS Amco Veba Power System

Con carichi molto pesanti, il sistema AVPS è in grado di raggiungere sbracci maggiori, garantendo la massima precisione nella movimentazione.

AVPS system can reach longer outreach with very heavy load, with the highest precision.



SGS Sprint Generation System

L'applicazione dell'SGS aumenta la velocità di uscita degli sfilii senza pregiudicare la sicurezza della macchina.

Purpose of SGS system is to increase the extensions speed without effecting the crane safety.



SDD Soft Descend Drive

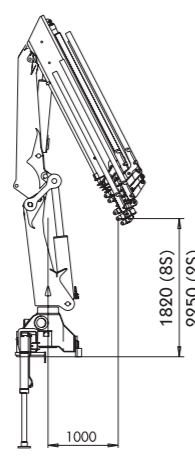
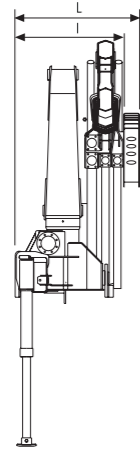
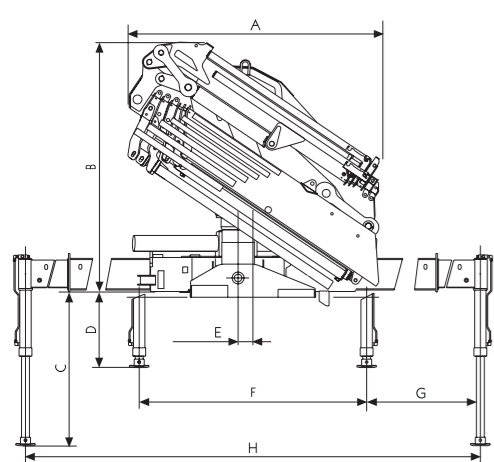
Il sistema SDD è studiato per smorzare le oscillazioni e garantire un perfetto controllo del movimento di discesa del braccio.

The SDD system is designed to reduce the oscillations and assure a perfect control of the motions.



Modello	25	35	45	55	65	75	85
Standard	22 sec.	32 sec.	42 sec.	51 sec.	60 sec.	69 sec.	78 sec.
SGS	10 sec.	16 sec.	22 sec.	29 sec.	36 sec.	43 sec.	50 sec.

Radiocomando multifunzione abbinato a distributore proporzionale compensato (Danfoss)
Radio remote control system with pressure compensated valve block (Danfoss)
Radio-commande multifonctions (Danfoss)
Multifunktions-Rundfunkbedienung (Danfoss)
Radiocontrol multifunciones (Danfoss)
Controlo remoto multifuncional (Danfoss)



DATI TECNICI TECHNICAL DATA

936/1S	1S	2S	3S	4S	5S	6S	7S	8S
Kg	32400	12100	7600	5450	3980	3010	2320	
m.	1.0	2.57	4.18	5.95	7.75	9.80	11.89	

936/2S	1S	2S	3S	4S	5S	6S	7S	8S
Kg	31150	11700	7450	5190	3980	3010	2320	1800
m.	1.0	2.57	4.18	5.95	7.80	9.80	11.89	14.18

936/3S	1S	2S	3S	4S	5S	6S	7S	8S
Kg	30400	11400	7240	5030	3800	3010	2320	1800
m.	1.0	2.57	4.20	5.95	7.80	9.80	11.90	14.20

936/4S	1S	2S	3S	4S	5S	6S	7S	8S
Kg	29850	11100	6940	4790	3580	2790	2320	1780
m.	1.0	2.57	4.30	6.05	7.90	9.90	11.90	14.20

936/5S	1S	2S	3S	4S	5S	6S	7S	8S
Kg	29300	10800	6660	4580	3400	2610	2140	1800
m.	1.0	2.57	4.40	6.15	8.00	10.00	12.00	14.20

*) Portata teorica - Theoretical lifting capacity

MOMENTO DI SOLLEVAMENTO
MAX. LIFTING MOMENT
MOMENT D'ELEVATION
MAX. AUFLIEBEMOMENT
MOMENTOS DE ELEVACION
MOMENTO DE ELEVACION MAX.
(t.m.)

	1S	2S	3S	4S	5S	6S	7S	8S
	32.4							

PENDENZA MAX. DI LAVORO
MAX WORKING HEEL
DEVERS MAXI DE TRAVAIL
MAX. ARBEITSNEIGUNG
INCLINACION MAX. DE TRABAJO
PENDENCIA MAX. DE TRABAJO
(°)

	1S	2S	3S	4S	5S	6S	7S	8S
	4°(8%)							

CAPACITÀ SERBATOIO OLIO
OIL TANK CAPACITY
CONTENANCE RESERVOIR HUILE
ÖLBÄLTERHINHALT
CAPACIDAD DEL DEPOSITO ACEITE
CAPACIDADE DO DEPOSITO DE OLEO
(l.)

	1S	2S	3S	4S	5S	6S	7S	8S
	160							

SBRACCIO MAX. VERTICALE
MAX VERTICAL REACH
LONGEUR DU BRAS VERTICALE
MAX. VERTIKAL REICHWEITE
ALCANGE MAX. VERTICAL
ALCANGE MAX. VERTICAL
(m.)

	1S	2S	3S	4S	5S	6S	7S	8S
hyd.	9.9	11.7	13.5	15.5	17.8	20.0	22.3	24.5
man.	16.1	18.0	20.0	22.3	24.3	26.4	28.4	30.6
J.4s hyd.				25.2	27.3			

PRESSIONE D'ESERCIZIO
WORKING PRESSURE
PRESSION DE SERVICE
BETRIEBSDRUCK
PRESION DE TRABAJO
PRESSÃO DE TRABALHO
(bar)

	1S	2S	3S	4S	5S	6S	7S	8S
	320							

PORTATA AL DISTRIBUTORE
OIL HYDRAULIC DISCHARGE TO THE DISTRIBUTOR BOX
DÉBIT D'UILE HYDRAULIQUE AU DISTRIBUTEUR
HYDRAULISCHE ÖLTRAGFÄHIGKEIT ZUM VERTEILER
CAUDAL AL DISTRIBUIDOR
DESCARGA DE OLEO HIDRAULICO AO DISTRIBUIDOR
(l/min.)

	1S	2S	3S	4S	5S	6S	7S	8S
	45							

936/6S	1S	2S	3S	4S	5S	6S	7S	8S
Kg	28600	10550	6430	4370	3200	2440	1970	1630
m.	1.0	2.57	4.45	6.30	8.10	10.10	12.10	14.30

936/7S	1S	2S	3S	4S	5S	6S	7S	8S
Kg	28000	10300	6100	4160	3050	2300	1820	1480
m.	1.0	2.57	4.60	6.40	8.30	10.30	12.30	14.50

936/8S	1S	2S	3S	4S	5S	6S	7S	8S
Kg	27600	10250	5870	3960	2860	2130	1680	1350
m.	1.0	2.57	4.70	6.50	8.40	10.40	12.40	14.60

936/4S Jib 4s	1S	2S	3S	4S	5S	6S	7S	8S
Kg								
m.								

936/5S Jib 4s	1S	2S	3S	4S	5S	6S	7S	8S
Kg								
m.								

ANGOLO DI ROTAZIONE
SLEWING ANGLE
ANGLE ROTATION
DREHWINKEL
ANGULO DE ROTACION
ANGULO DE ROTAÇÃO
(°)

	1S	2S	3S	4S	5S	6S	7S	8S
	400°							

VELOCITÀ DI ROTAZIONE
SLEWING SPEED
VITESSE DE ROTATION
DREHGESCHWINDIGKEIT
VELOCIDAD DE ROTACION
VELOCIDADE DE ROTAÇÃO
(180°)

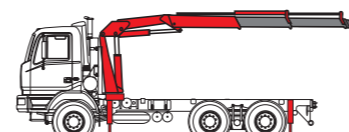
	1S	2S	3S	4S	5S	6S	7S	8S
	25s							

PESO GRU SENZA STABILIZZATORI
CRANE WEIGHT WITHOUT STABILIZER
MASSE GRUE SANS STABILISATEURS
KRANGEWICHT OHNE ABSTÜTZUNGEN
PESO DE LA GRUA SIN GATOS
PESO DA GRUA SEM ESTABILIZADORE
(kg.)

	1S	2S	3S	4S	5S	6S	7S	8S
	3050	3280	3500	3730	3900	4060	4180	4300

PESO STAB.
WEIGHT OF STABILIZERS
POIDS DES STABILISATEURS
GEWICHT VON DEN ABSTÜTZUNGEN
PESO GATOS EXTENSIBLES
PESO DOS ESTABILIZADORES
(kg.)

	1S	2S	3S	4S	5S	6S	7S	8S
	540							



Autocarro consigliato
Recommended truck
Camion conseillé
Caminhão aconselhado
Passo - Wheelbase - Empattement - Passo: 4200 mm. M.T.T. ton 24 G.V.W. ton 24

ACCESSORI

- Attivazione elementi supplementari *
- Posto di manovra in alto
- Verricello
- Comando a distanza

*) no 7S-8S

ACCESSORIES

- Supplementary element activation*
- Top seat
- Winch
- Remote control

*) no 7S-8S

ACCESSOIRES

- Activation éléments supplémentaires*
- Poste de manoeuvre en haut
- Treuil
- Commande à distance

*) no 7S-8S

ZUBEHOERE

- Zusatzfunktionen
- Hochsitz
- Winde
- Funksteuerung

*) no 7S-8S

ACCESORIOS

- Activación elementos suplementarios*
- Puesto de maniobra arriba
- Cabrestante
- Mando a distancia

*) no 7S-8S

ACCESORIOS

- Ativação de elementos suplementares*
- Posto de manobra no cimo
- Guincho
- Comando a distância

*) no 7S-8S

M.T.T. 5.80.0000 19/0004 3000 REV.1

Dati, descrizioni e illustrazioni sono indicativi e non impegnano Amco Veba. Gru prodotte e/o commercializzate da Amco Veba - Data, descriptions and illustrations are merely indicative and not binding. Cranes manufactured and marketed by Amco Veba - Les données, descriptions et illustrations sont uniquement indicatives et n'engagent pas Amco Veba. Grues produites et/ou vendues par Amco Veba - Angaben, Beschreibungen und Abbildungen sind weisend und verpflichten nicht Amco Veba. Die Krane werden von Amco Veba hergestellt und/oder vermarktet - Los datos, las descripciones y las ilustraciones son indicativos y no implican compromiso para Amco Veba. Gruas producidas y/o comercializadas por Amco Veba - Os dados as descrições e ilustrações são indicativos e não comprometem Amco Veba. Guindaste produzidos e/ou comercializados pela Amco Veba.



Amco Veba s.r.l.
Via Einstein, 4
42028 Poviglio (RE) Italy
Tel. +39 0522 40.80.11
Fax +39 0522 40.80.80
E-mail: commerciale@amcoveba.it
www.amcoveba.com

COMPANY
WITH QUALITY SYSTEM
CERTIFIED BY DNV
=ISO 9001/2000=





- Limitatore di momento
- Comandi bilaterali
- Sfili esagonali
- Mart. sfilo indipendenti
- Mart. stab. fissi
- Stabilizzatori allargabili idraulicamente
- Valvole flangiate
- Serbatoio olio
- Kit di montaggio
- Norma di progettazione: DIN15018 - EN12999
- Classe di collaudo a fatica: B3
- Amco Veba Power System (AVPS)
- Sprint Generation System (SGS)
- Electronic Black Box (EBB) only Radio
- Soft Descend Drive (SDD)



- Load limiting device
- Dual controls
- Hexagonal section extension
- Independent extension cylinders
- Fixed stabilizer cylinders
- Outriggers with hydraulic extension
- Flanged valves
- Oil tank
- Assembly kit
- Design in accordance with DIN15018 - EN12999
- Fatigue test classification: B3
- Amco Veba Power System (AVPS)
- Sprint Generation System (SGS)
- Electronic Black Box (EBB) only Radio
- Soft Descend Drive (SDD)



- Limiteur de moment
- Commandes bilatérales
- Extensions hydrauliques à section hexagonale
- Vérins hydrauliques à sortie indépendante
- Béquilles fixes
- Béquilles avec ouverture hydraulique
- Vannes bridées
- Réservoir pour huile
- Kit de brides de fixation
- Normes de calcul: DIN15018 - EN12999
- Essai de fatigue avec classification: B3
- Amco Veba Power System (AVPS)
- Sprint Generation System (SGS)
- Electronic Black Box (EBB) only Radio
- Soft Descend Drive (SDD)



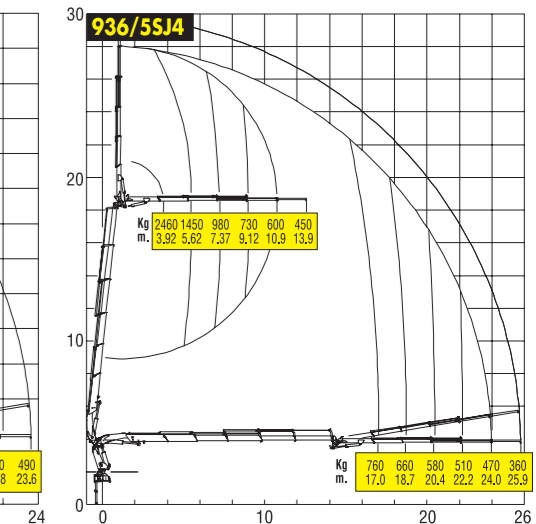
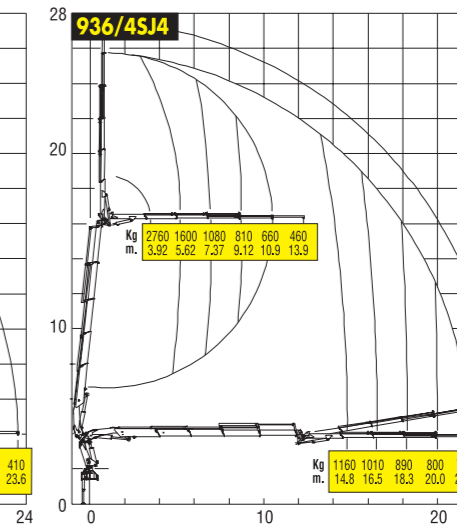
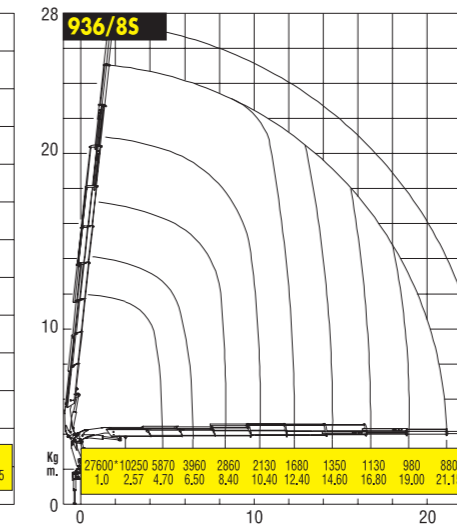
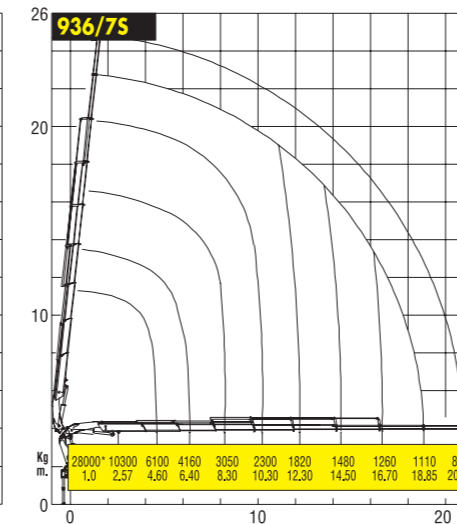
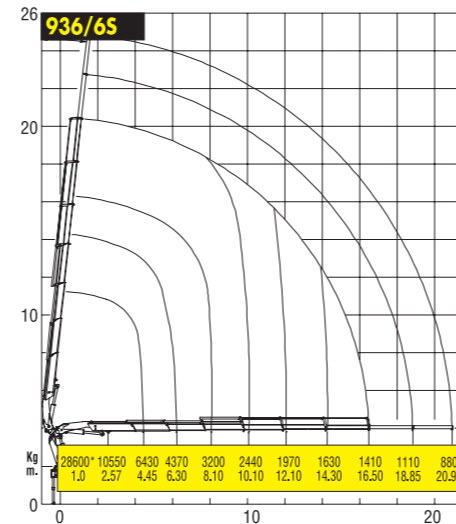
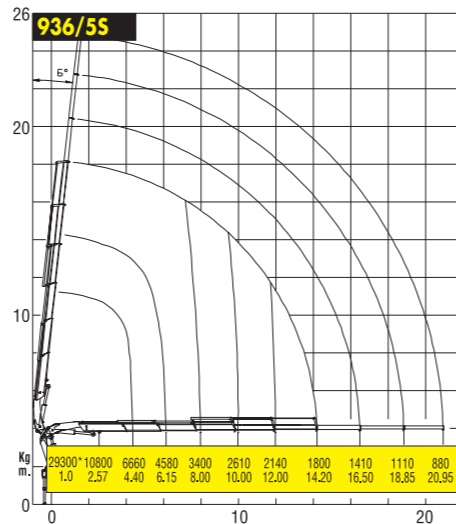
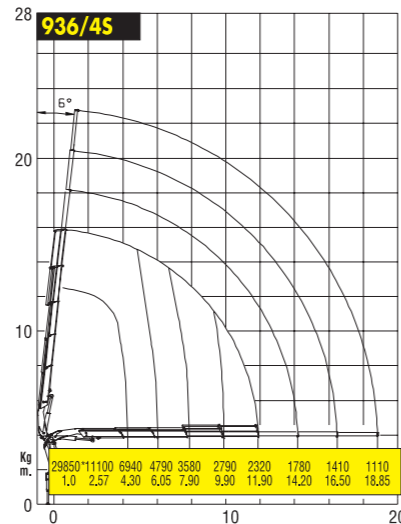
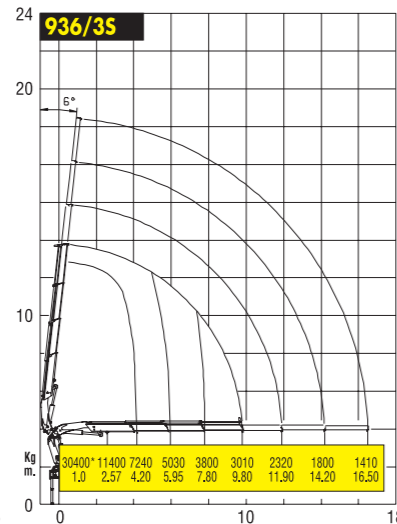
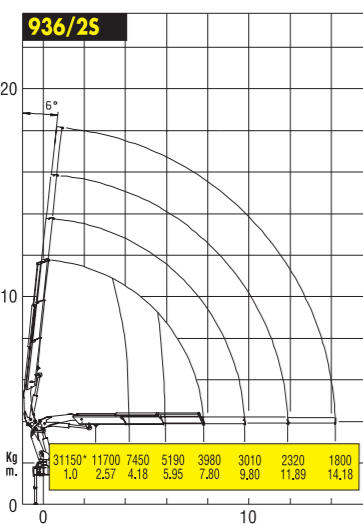
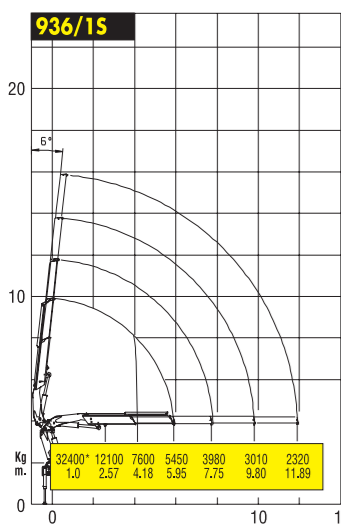
- Momentbegrenzer
- Beiseitige Kransteuerung
- Sechskantige Auszüge
- Unabhängige Auszugszylinder
- Feste Abstützbeine
- Hydraulisch ausfahrbare Abstützbeine
- Ventile mit Flansch
- Ölbehälter
- Montagesatz
- Berechnungsnorm nach DIN15018 - EN12999
- Ermüdungstest in Klasse: B3
- Amco Veba Power System (AVPS)
- Sprint Generation System (SGS)
- Electronic Black Box (EBB) only Radio
- Soft Descend Drive (SDD)



- Limitador de momento
- Mandos bilaterales
- Brazos telescópicos hexagonales
- Cilindros extensión independientes
- Gatos estabilizadores fijos
- Estabilizadores extraíbles hidráulicamente
- Válvulas ensanchadas
- Tanque de aceite
- Kit de ensamblaje
- Norma del proyecto: DIN15018 - EN12999
- Tipo de ensayo a la fatiga: B3
- Amco Veba Power System (AVPS)
- Sprint Generation System (SGS)
- Electronic Black Box (EBB) only Radio
- Soft Descend Drive (SDD)



- Limitador de momento
- Comandos bilaterales
- Extensões hexagonais
- Cilindros de extensão independentes
- Gatos estabilizadores fijos
- Estabilizador alongado hidráulicamente
- Válvulas flangeadas
- Tanque de óleo
- Kit de montagem
- Norma de projeto DIN15018 - EN12999
- Typo de Ensayo a la fatiga: B3
- Amco Veba Power System (AVPS)
- Sprint Generation System (SGS)
- Electronic Black Box (EBB) only Radio
- Soft Descend Drive (SDD)



*) Pontata teorica - Theoretical lifting capacity