

TIPO ARGANO / WINCH TYPE

BWF6000

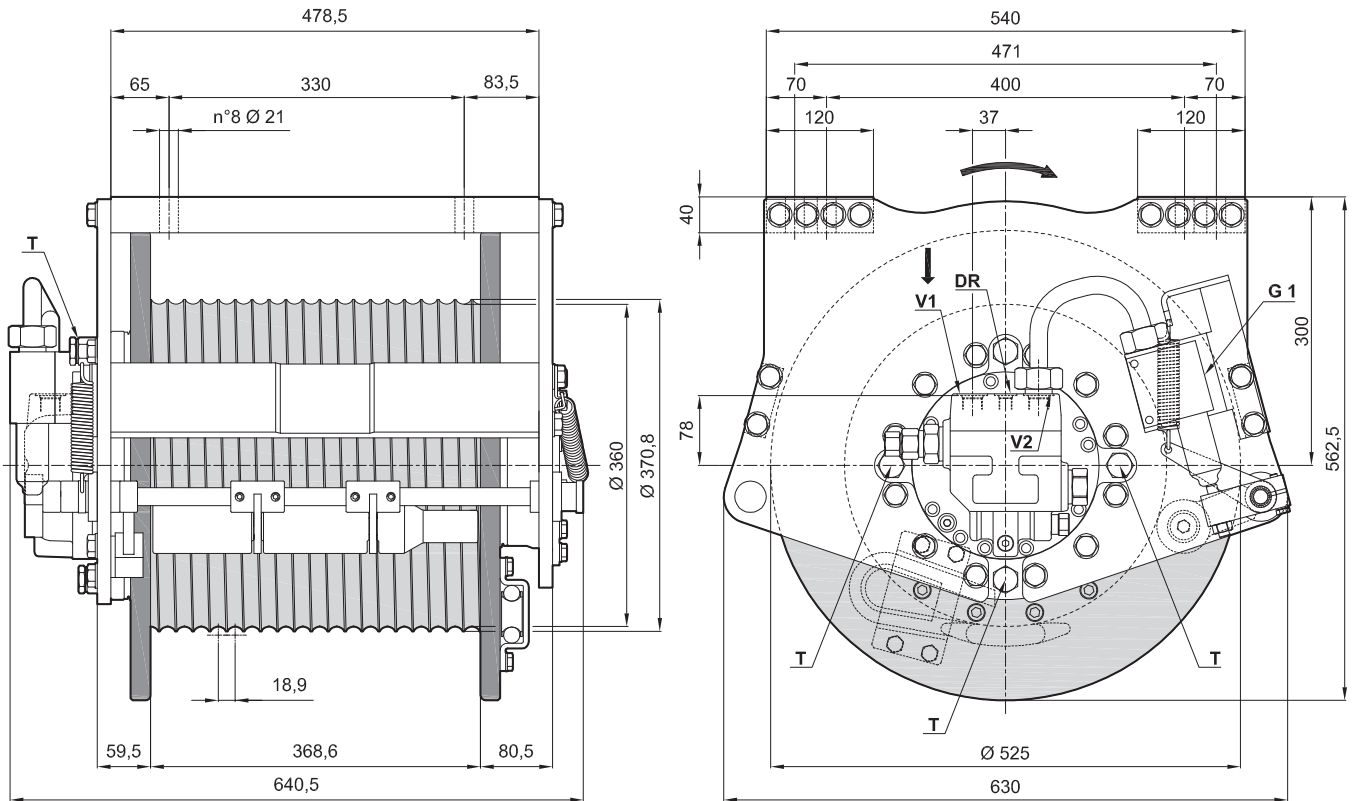
The dimensions shown can be used as reference

Previous name: **BWF4100-P**

distinctive features: Round frame, hydraulic pressure roller

motor displacement: 64 cm³/rev, Integrated motor

Max backpressure on return Line: 5 bar



*The data shown in this page are ONLY FOR INFORMATION. The actual data will be issued according to Customer Application and Duty Cycle.

Working layers	[n°]	1	2	3	4	-	-
Line pull	[kg]	7030	6500	6040	-	-	-
Maximum rope speed	[m/min]	29	31	33	-	-	-
Rope length	[m]	23	46	73	101	-	-

Brevini® Motor	H4VA64	Advised rope diameter	18	[mm]
Starting lifting pressure	255	[bar]	Oil quantity	3,5
Operating pressure	215	[bar]	Weight	407
Maximum oil flow at the motor	120	[l/min]	Oil fill/drain plug	G1/2
Minimum oil flow at the motor	15	[l/min]	Lifting port	7/8-14 UNF
Static braking torque	626	[Nm]	Lowering port	7/8-14 UNF
Gear ratio	71,4	[i]	Motor drain port	3/4-16 UNF

Winch mechanisms classification in agreement with F.E.M. (1.001) (Third edition revised on 01.10.1998) **M5 (T5-L2)** n₂ = 25 rpm

For safety reasons always keep at least 3 wraps of rope wrapped on the drum

Use 8.8 grade screws to fix the winch

Technical features may change with no previous notice from the manufacturer

THE PRESENT WINCH CAN'T BE USED FOR LIFTING OF PERSONNEL

The MBL of the Rope must be verified according to the requested Safety Factors

TIPO ARGANO / WINCH TYPE

BWF6000

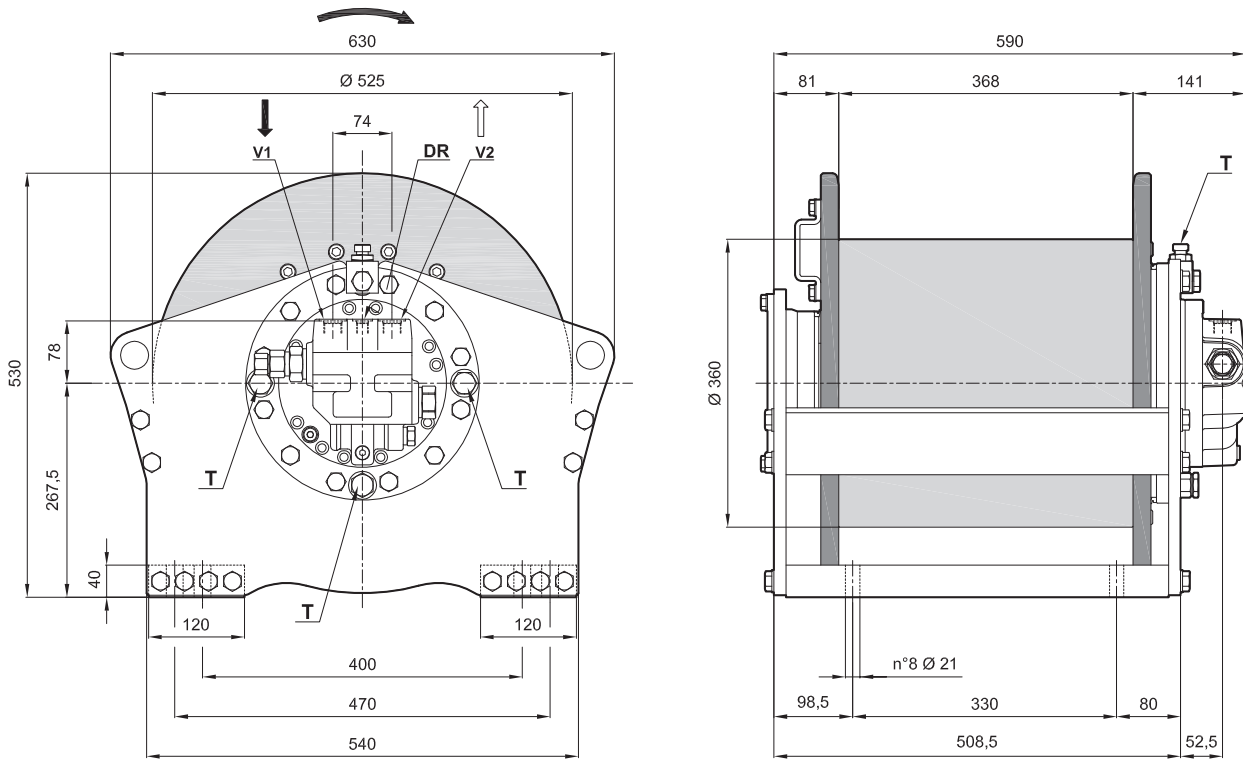
The dimensions shown can be used as reference

Previous name: **BW4100**

distinctive features: Round frame

motor displacement: 64 cm³/rev, Integrated motor

Max backpressure on return Line: 5 bar



*The data shown in this page are ONLY FOR INFORMATION. The actual data will be issued according to Customer Application and Duty Cycle.

Working layers	[n°]	1	2	3	4	-	-
Line pull	[kg]	5930	5480	5100	-	-	-
Maximum rope speed	[m/min]	43	46	50	-	-	-
Rope length	[m]	23	47	74	102	-	-

Brevini® Motor	H4VA64	Advised rope diameter	18	[mm]
Starting lifting pressure	320 [bar]	Oil quantity	3,5	[l]
Operating pressure	270 [bar]	Weight	395	[kg]
Maximum oil flow at the motor	120 [l/min]	Oil fill/drain plug	G1/2	T
Minimum oil flow at the motor	15 [l/min]	Lifting port	7/8-14 UNF	V1
Static braking torque	626 [Nm]	Lowering port	7/8-14 UNF	V2
Gear ratio	48 [i]	Motor drain port	3/4-16 UNF	DR

Winch mechanisms classification in agreement with F.E.M. (1.001) (Third edition revised on 01.10.1998) **M6 (T6-L2)** n₂ = 25 rpm

For safety reasons always keep at least 3 wraps of rope wrapped on the drum

Use 8.8 grade screws to fix the winch

Technical features may change with no previous notice from the manufacturer

THE PRESENT WINCH CAN'T BE USED FOR LIFTING OF PERSONNEL

The MBL of the Rope must be verified according to the requested Safety Factors